

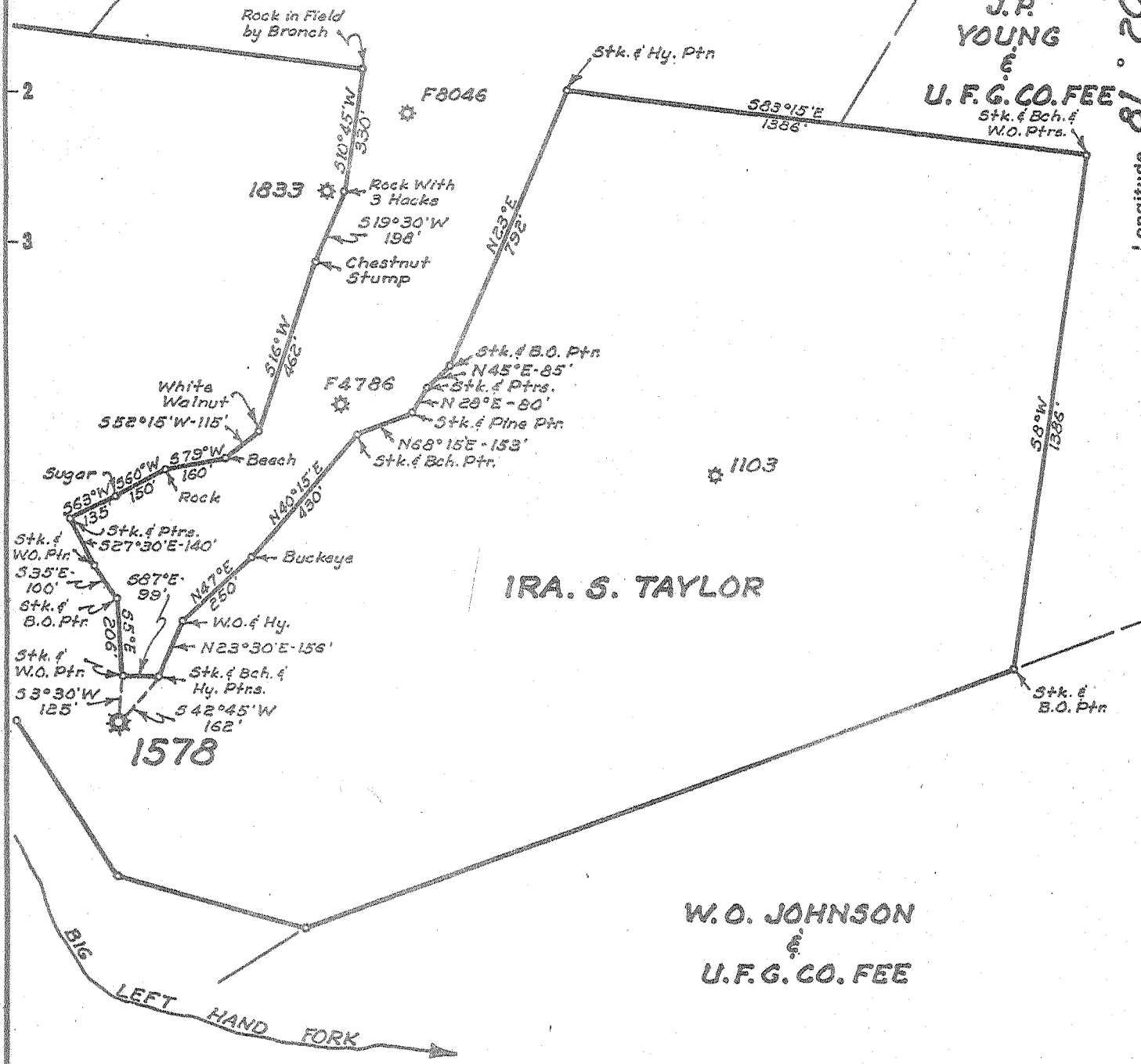
Latitude 38° 35'

W. S. LEWIS

JOHN R. SUMMERS

J. P. YOUNG
U. F. G. CO. FEE
Stk. & Bch. & W.O. Ptrs.

Longitude 81° 02' 18"



New Location...
 Drill Deeper.....
 Abandonment.....

Company UNITED FUEL GAS CO.
 Address CHARLESTON, W.VA.
 Farm IRA. S. TAYLOR
 Tract _____ Acres 12.3 Lease No. 11953
 Well (Farm) No. 2 Serial No. 1578
 Elevation (Spirit Level) 714.84'
 Quadrangle WALTON
 County ROANE District WALTON
 Engineer Keyser & Russell
 Engineer's Registration No. 2529
 File No. 76-73 Drawing No. _____
 Date 8-2-55 Scale 1"=400'

STATE OF WEST VIRGINIA
 DEPARTMENT OF MINES
 OIL AND GAS DIVISION
 CHARLESTON

WELL LOCATION MAP
 FILE NO. ROA-973-A

+ Denotes location of well on United States Topographic Maps, scale 1 to 62,500, latitude and longitude lines being represented by border lines as shown.

- Denotes one inch spaces on border line of original tracing.



STATE OF WEST VIRGINIA
DEPARTMENT OF MINES
OIL AND GAS DIVISION

543

WELL RECORD

Oil or Gas Well Gas
(KIND)

Quadrangle Walton
Permit No. 933A
Company United Fuel Gas Co.
Address P.O. Box 1273, Charleston 25, W. Va.
Farm Ira S. Taylor Acres 123
Location (waters) Big Left Hand Fork
Well No. 1578 Elev. 714.84'
District Walton County Roane
The surface of tract is owned in fee by _____
Address _____
Mineral rights are owned by Guy Taylor, et al
Address Clendenin, W. Va.
Drilling commenced 2-3-26
Drilling completed 5-24-26
Date Shot 5-24-26 From _____ To _____
With 20 cts.
Open Flow 28 /10ths Water in _____ 2 Inch
/10ths Merc. in _____ Inch
Volume 250,000 Cu. Ft.
Rock Pressure 145 lbs. _____ hrs.
Oil _____ bbls., 1st 24 hrs.
Fresh water _____ feet _____ feet
Salt water 1060' feet _____ feet

| Casing and Tubing | Used in Drilling | Left in Well | Packers |
|-------------------|------------------|------------------|-----------------|
| Size | | | Kind of Packer |
| 16 | | | <u>Anchor</u> |
| 13 | | | Size of |
| 10 | | | <u>3x5-3/16</u> |
| 8 1/4 | <u>490'</u> | <u>400'</u> | Depth set |
| 6 5/8 | | <u>1494'</u> | <u>1579'</u> |
| 5 3/16 | | <u>1695' 10"</u> | Perf. top |
| 3 | | | Perf. bottom |
| 2 | | | Perf. top |
| Liners Used | | | Perf. bottom |

CASING CEMENTED _____ SIZE _____ No. Ft. _____ Date _____
COAL WAS ENCOUNTERED AT _____ FEET _____ INCHES
_____ FEET _____ INCHES FEET _____ INCHES
_____ FEET _____ INCHES FEET _____ INCHES

| Formation | Color | Hard or Soft | Top | Bottom | Oil, Gas or Water | Depth Found | Remarks |
|-------------|-------|--------------|-------|--------|-------------------|-------------|--------------------|
| Red Rock | | | 0 | 60 | | | |
| Sand | | | 60 | 80 | | | |
| Slate | | | 80 | 210 | | | Reduced hole 1556' |
| Sand | | | 210 | 240 | | | Show gas 1562' |
| Slate | | | 240 | 460 | | | Injun Gas 1615-19' |
| Sand | | | 460 | 530 | | | Injun Gas 1623-25' |
| Slate | | | 530 | 670 | | | |
| Sand | | | 670 | 700 | | | |
| Slate | | | 700 | 765 | | | |
| Sand | | | 765 | 825 | | | |
| Slate | | | 825 | 860 | | | |
| Sand | | | 860 | 900 | | | |
| Slate | | | 900 | 955 | | | |
| Salt Sand | | | 955 | 1319 | | | |
| Slate | | | 1319 | 1349 | | | |
| Lime Shell | | | 1349 | 1359 | | | |
| Slate | | | 1359 | 1369 | | | |
| Maxon Sand | | | 1369 | 1430 | | | |
| Little Lime | | | 1430 | 1465 | | | |
| Pencil Cave | | | 1465 | 1472 | | | |
| Big Lime | | | 1472 | 1590 | | | |
| Keener | | | 1590 | 1598 | | | |
| Big Injun | | | 1598 | 1635 | | | |
| Slate | | | 1635 | 1686 | | | |
| Total depth | | | 1686' | | | | |

03 04 05 06 07 08 09 10 11 12 13 14 15 16 17 18 19 20 21 22 23 24 25 26 27 28 29 30 31
AUG 1955
RECEIVED
WEST VIRGINIA
DEPT. OF MINES
OCT 6 1955

