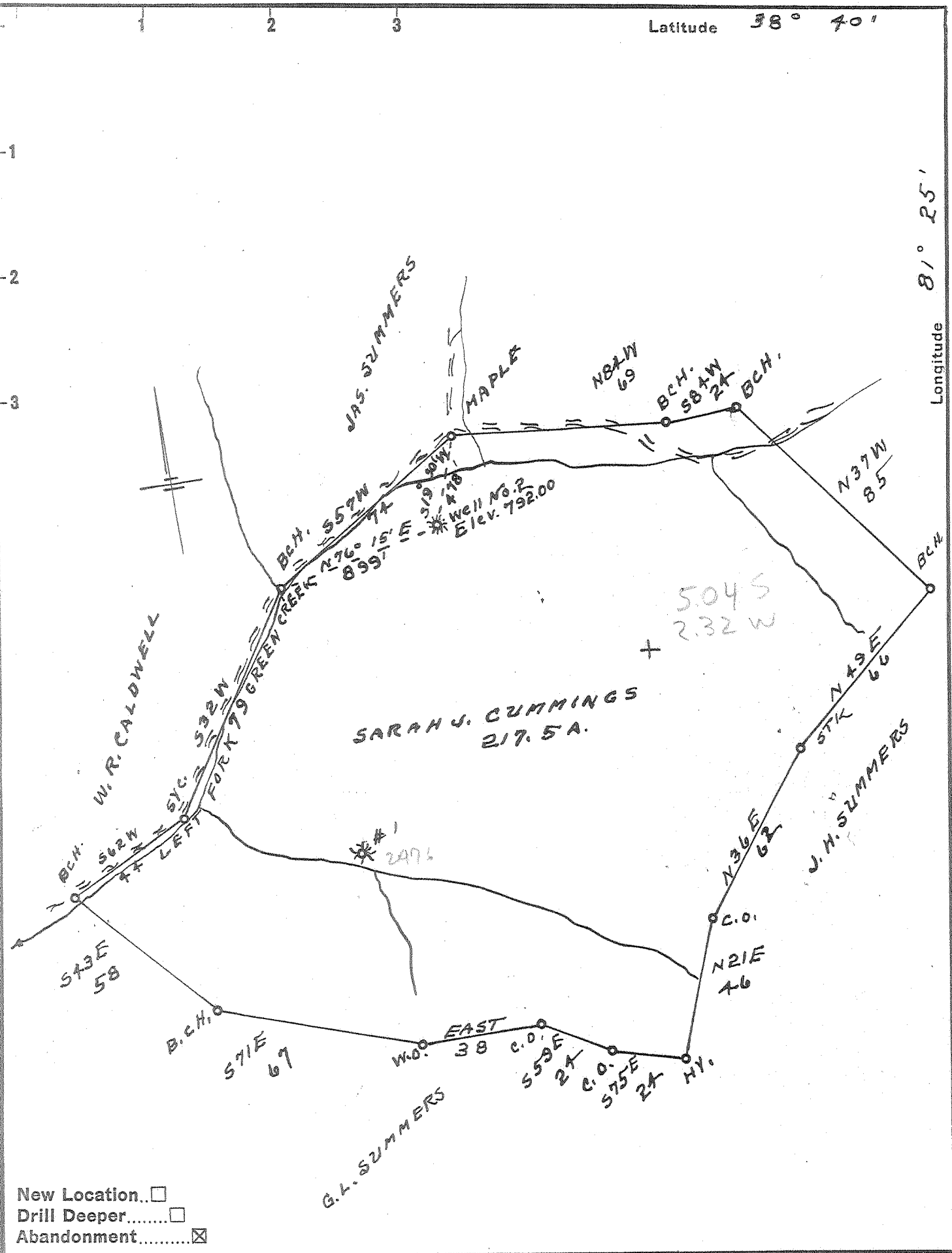


Latitude 38° 40'

Longitude 81° 25'



New Location...
 Drill Deeper.....
 Abandonment.....

Company RYAN OIL COMPANY
 Address WALTON, W. VA.
 Farm SARAH J. CUMMINGS
 Tract _____ Acres 217.5 Lease No. _____
 Well (Farm) No. 2 Serial No. _____
 Elevation (Spirit Level) 792.00
 Quadrangle WALTON
 County ROANE District HARPER
 Engineer S. F. Dye
 Engineer's Registration No. 804
 File No. _____ Drawing No. _____
 Date 11-7-55 Scale 1" = 40 POLES

STATE OF WEST VIRGINIA
 DEPARTMENT OF MINES
 OIL AND GAS DIVISION
 CHARLESTON
see microfilm for well record
WELL LOCATION MAP
 FILE NO. ROA-1004-A

+ Denotes location of well on United States Topographic Maps, scale 1 to 62,500, latitude and longitude lines being represented by border lines as shown.

- Denotes one inch spaces on border line of original tracing.

6-6 (198)