

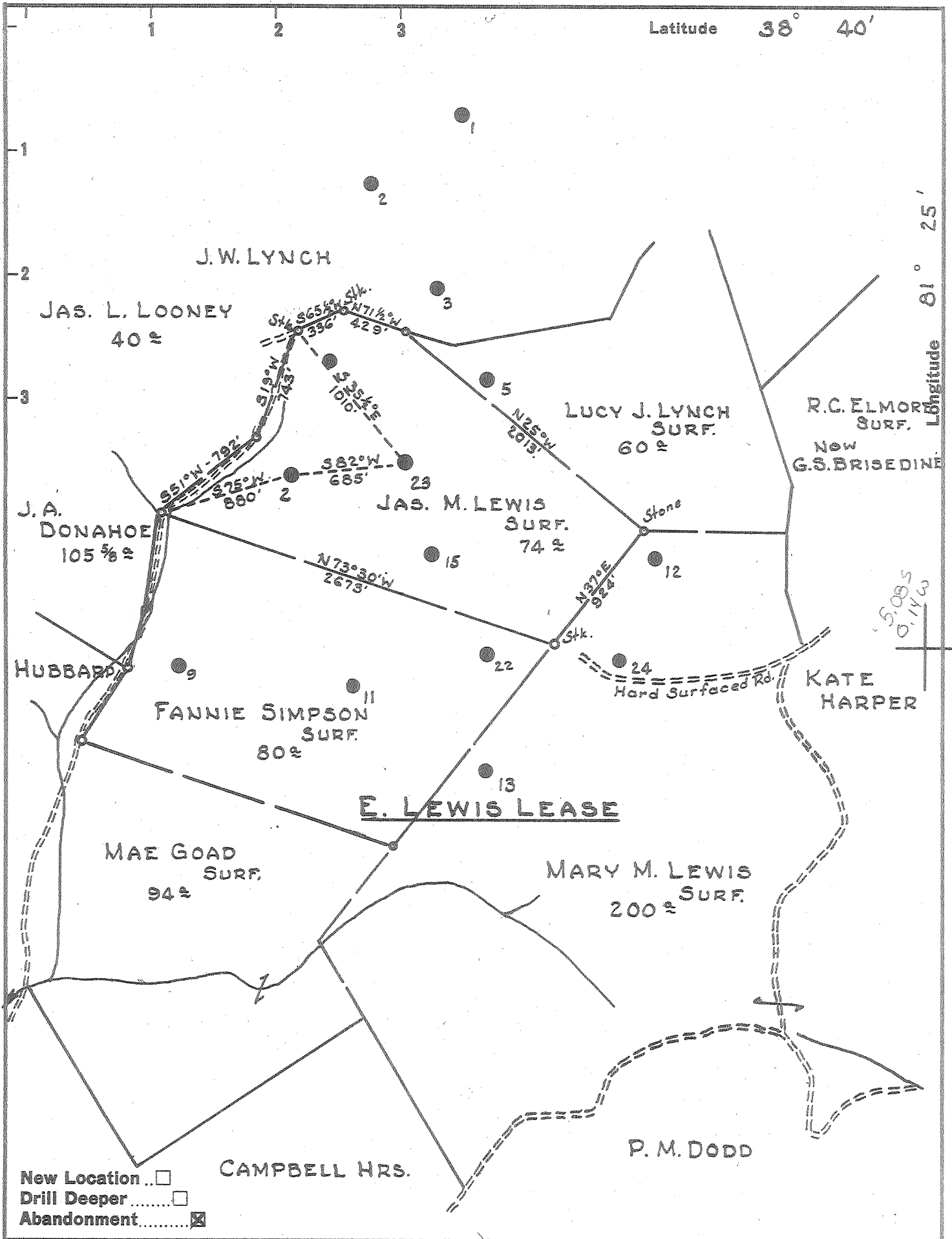
New Location
 Drill Deeper
 Abandonment

Company FOSTER MAYS
 Address RIPLEY, W. VA.
 Farm E. LEWIS
 Tract _____ Acres 675 Lease No. 56954
 Well (Farm) No. 2 Serial No. _____
 Elevation (Spirit Level) 902 911.01
 Quadrangle WALTON
 County ROANE District WALTON
 Engineer PAUL E. JOACHIM
 Engineer's Registration No. 669
 File No. 72-75 Drawing No. _____
 Date JAN. 7, 1961 Scale 1" = 800'

STATE OF WEST VIRGINIA
 DEPARTMENT OF MINES
 OIL AND GAS DIVISION
 CHARLESTON

Corrected
WELL LOCATION MAP
 FILE NO. ROA-1051-A

Renewed
 + Denotes location of well on United States Topographic Maps, scale 1 to 62,500, latitude and longitude lines being represented by border lines as shown.
 - Denotes one inch spaces on border line of original tracing.



Latitude 38° 40'

Longitude 81° 25'

- New Location ..
- Drill Deeper
- Abandonment

Company FOSTER MAYS

Address RIPLEY, W. VA.

Farm E. LEWIS

Tract _____ Acres 675 Lease No. 56954

Well (Farm) No. 2 Serial No. _____

Elevation (Spirit Level) 902 911

Quadrangle WALTON

County ROANE District WALTON

Engineer PAUL E. JOACHIM

Engineer's Registration No. 669

File No. 72-75 Drawing No. _____

Date JAN. 7, 1961 Scale 1" = 800'

STATE OF WEST VIRGINIA
DEPARTMENT OF MINES
OIL AND GAS DIVISION
CHARLESTON

WELL LOCATION MAP

FILE NO. ROA-1081-A
(1051A)

+ Denotes location of well on United States Topographic Maps, scale 1 to 62,500, latitude and longitude lines being represented by border lines as shown.

- Denotes one inch spaces on border line of original tracing.

LEWIS, E., No. 2 - ROA-1051-A-

By Walter Mays -
Walton S.A.

See microfilm for Well Record