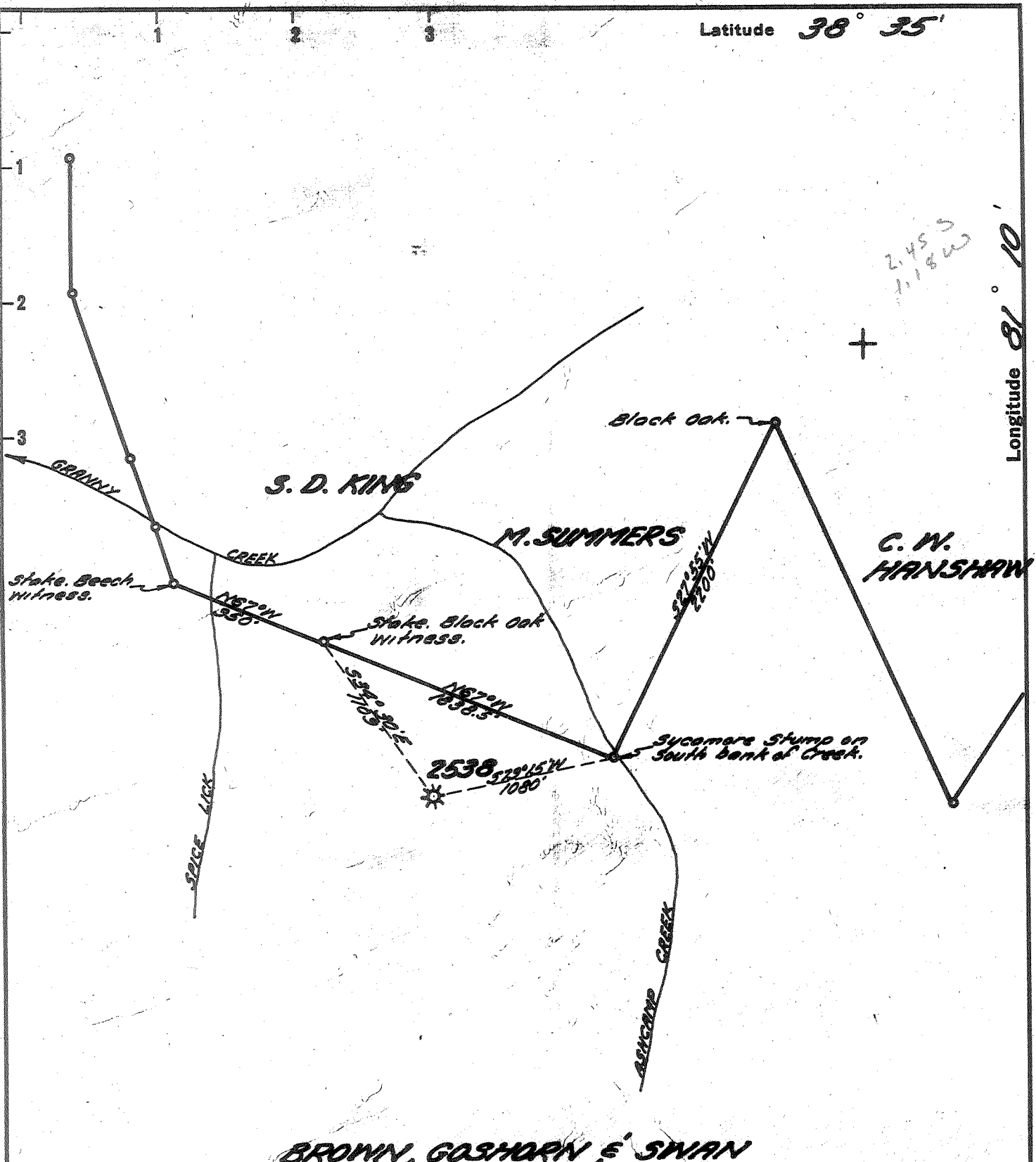


Latitude 38° 35'

Longitude 81° 10'



2,450  
1,180

New Location   
 Drill Deeper   
 Abandonment

Company UNITED FUEL GAS CO.  
 Address CHARLESTON, W. VA.  
 Farm BROWN, GOSHORN & SWAN  
 Tract \_\_\_\_\_ Acres 2000 Lease No. 2264  
 Well (Farm) No. \_\_\_\_\_ Serial No. 2538  
 Elevation (Spirit Level) 1160'  
 Quadrangle OTTER  
 County ROANA District GEARY  
 Engineer Hubert R. Kerrell  
 Engineer's Registration No. 2529  
 File No. 84-73 Drawing No. \_\_\_\_\_  
 Date 6-9-59 Scale 1" = 800'

STATE OF WEST VIRGINIA  
 DEPARTMENT OF MINES  
 OIL AND GAS DIVISION  
 CHARLESTON

WELL LOCATION MAP  
 FILE NO. ROA-1063-A

+ Denotes location of well on United States Topographic Maps, scale 1 to 62,500, latitude and longitude lines being represented by border lines as shown.

- Denotes one inch spaces on border line of original tracing.



619

STATE OF WEST VIRGINIA  
DEPARTMENT OF MINES  
OIL AND GAS DIVISION

Quadrangle Otter

Permit No 1063-A

WELL RECORD

Oil or Gas Well Gas  
(KIND)

Company United Fuel Gas Company  
 Address P.O. Box 1273; Charleston 25, W.Va.  
 Farm Brown, Goshorn, & Swan Acres 2000  
 Location (waters) Ashcamp Run  
 Well No. 2538 Elev. 1160.0  
 District Geary County Roane  
 The surface of tract is owned in fee by \_\_\_\_\_  
 Address \_\_\_\_\_  
 Mineral rights are owned by James F. Brown, III, Trustee, et al  
Box 88 Address Charleston, W. Va.  
 Drilling commenced 11-21-28  
 Drilling completed 1-20-29  
 Date Shot \_\_\_\_\_ From \_\_\_\_\_ To \_\_\_\_\_  
 With \_\_\_\_\_  
 Open Flow \_\_\_\_\_ /10ths Water in \_\_\_\_\_ Inch  
 \_\_\_\_\_ /10ths Merc. in \_\_\_\_\_ Inch  
 Volume \_\_\_\_\_ Cu. Ft.  
 Rock Pressure 355 lbs. \_\_\_\_\_ hrs.  
 Oil \_\_\_\_\_ bbls., 1st 24 hrs.  
 WELL ACIDIZED \_\_\_\_\_  
 WELL FRACTURED \_\_\_\_\_

Casing and Tubing	Used in Drilling	Left in Well	Packers
Size			Kind of Packer
16			<u>Anchor</u>
13			Size of
10			<u>3 x 5-3/16</u>
8 1/4		<u>516</u>	Depth set
6 3/8		<u>1874</u>	<u>1933'</u>
5 3/16			Perf. top
3		<u>2021</u>	Perf. bottom
2			Perf. top
Liners Used			Perf. bottom

CASING CEMENTED \_\_\_\_\_ SIZE \_\_\_\_\_ No. Ft. \_\_\_\_\_ Date \_\_\_\_\_

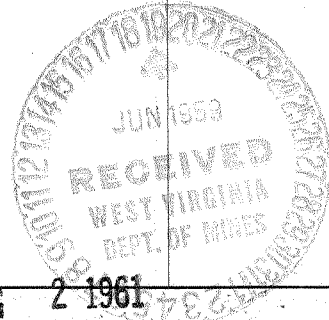
COAL WAS ENCOUNTERED AT \_\_\_\_\_ FEET \_\_\_\_\_ INCHES  
 \_\_\_\_\_ FEET \_\_\_\_\_ INCHES FEET \_\_\_\_\_ INCHES  
 \_\_\_\_\_ FEET \_\_\_\_\_ INCHES FEET \_\_\_\_\_ INCHES

RESULT AFTER TREATMENT

ROCK PRESSURE AFTER TREATMENT

Fresh Water \_\_\_\_\_ Feet Salt Water \_\_\_\_\_ Feet

Formation	Color	Hard or Soft	Top	Bottom	Oil, Gas or Water	Depth	Remarks
Surface				10	516' of 8-1/4" casing run on 8-1/4 2		
Slate			10	40	Show and left in hole.		
Red Rock			40	55	1874' of 6-5/8 " casing run on 6-5/8		
Sand			55	100	x 8-1/4" Bottom hole packer at 1853'		
Red Rock			100	115	steel line measure.		
Shell			115	154	Hole reduced at 1925		
Slate			154	320			
Sand			320	400	Gas 1963 to 1966 26/10 W 2" 215 mcf		
Slate			400	425	Gas 1970 to 1978 56/10 W 2" 315 mcf		
Sand			425	475			
Slate			475	525	Open flow test when tubed 24/10 W 2"		
Sand			525	656			207 mcf
Slate			656	790			
Sand			790	865			
Lime			865	925			
Slate & Shell			925	1225			
Sand			1225	1260			
Slate			1260	1350			
Sand			1350	1695			
Slate & Shell			1695	1730			
Red Rock			1730	1735			
Slate & Shell			1735	1749			
Maxon Sand			1749	1769			
Slate			1769	1783			
Little Lime			1783	1809			
Slate			1809	1812			
Lime Shell			1812	1836			
Pencil Cave			1836	1845			
Big Lime			1845	1945			
Sand Big Injun			1945	1989			
Slate			1989				



Total Depth \_\_\_\_\_ (over) 2021 AUG 2 1961 2021'

Formation	Color	Hard or Soft	Top	Bottom	Oil, Gas or Water	Depth Found	Remarks
						1701 17 2561	
						36 01	
						50 31	
						56 11	

Date June 17, 19 59

APPROVED UNITED FUEL GAS COMPANY, Owner

By S. R. Russell  
(Title)

Supt., Civil Engineering Dept.