

Latitude 38° 40'

Longitude 81° 10'

N. & E. YORK

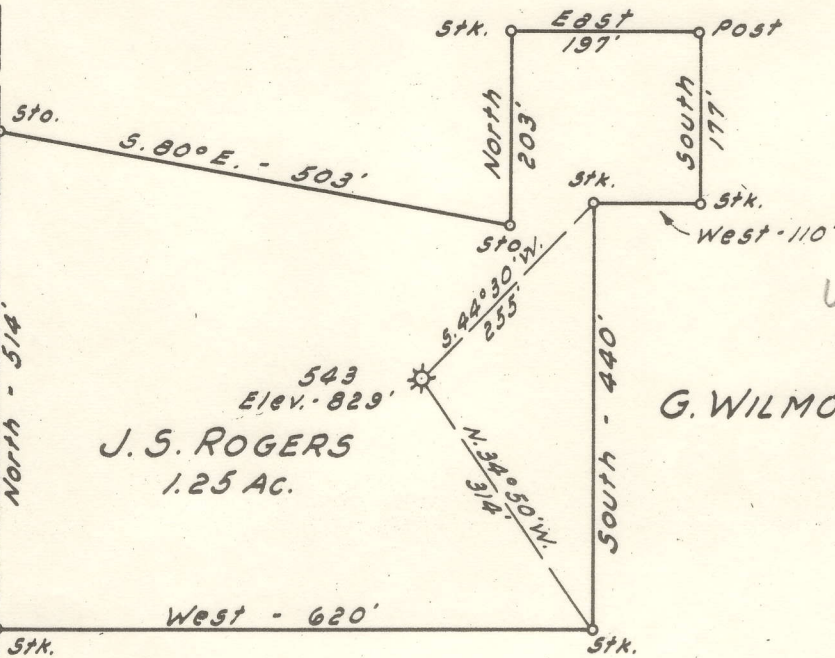
1/4 Mi. to Newton

A. W. FIELDS

J. S. ROGERS  
1.25 AC.

G. WILMOTH

A. L. SAMS



4.925  
0.60 W

New Location..   
 Drill Deeper.....   
 Abandonment.....

Company SOUTHEASTERN GAS CO.  
 Address UNION BLDG. - CHARLESTON, W. VA.  
 Farm J. S. ROGERS  
 Tract \_\_\_\_\_ Acres 1.25 Lease No. \_\_\_\_\_  
 Well (Farm) No. \_\_\_\_\_ Serial No. 543  
 Elevation (Spirit Level) 829'  
 Quadrangle OTTER  
 County ROANE District GEARY  
 Engineer JOHN W. HAMILTON  
 Engineer's Registration No. 2274  
 File No. \_\_\_\_\_ Drawing No. \_\_\_\_\_  
 Date SEPT. 12, 1959 Scale 1" = 200'

STATE OF WEST VIRGINIA  
 DEPARTMENT OF MINES  
 OIL AND GAS DIVISION  
 CHARLESTON

**WELL LOCATION MAP**  
 FILE NO. ROA-1069-A

+ Denotes location of well on United States Topographic Maps, scale 1 to 62,500, latitude and longitude lines being represented by border lines as shown.  
 - Denotes one inch spaces on border line of original tracing.





613

STATE OF WEST VIRGINIA  
DEPARTMENT OF MINES  
OIL AND GAS DIVISION  
LEASE NO. 2131  
**WELL RECORD**

Quadrangle Otter *we*  
Permit No. 1069-A

Oil or Gas Well Gas  
(KIND)

Company Southeastern Gas Company  
Address P. O. Box 2347, Charleston 28, W. Va.  
Farm J. F. Rogers Acres 1.25  
Location (waters) Sandy Creek  
Well No. 513 Elev. 829  
District Gary County Roane  
The surface of tract is owned in fee by J. S. Rogers  
Address Newton, W. Va.  
Mineral rights are owned by Same  
Address \_\_\_\_\_

Casing and Tubing	Used in Drilling	Left in Well	Packers
Size			Kind of Packer
16			
13			
10 3/4	20	20	Size of
8 5/8	385	385	
7 7/8" OD	1,392	1,392	Depth set <u>1,485</u>
5 3/16			
3 1/2	1,515	1,515	Perf. top
2			Perf. bottom
Liners Used			Perf. top
			Perf. bottom

Drilling commenced August 29, 1928  
Drilling completed \_\_\_\_\_  
Date Shot From 1511 To 1521  
With 20 qts.  
Open Flow 1/10ths Water in \_\_\_\_\_ Inch  
1/10ths Merc. in 3" Inch  
Volume 700M Cu. Ft.  
Rock Pressure \_\_\_\_\_ lbs. hrs.  
Oil \_\_\_\_\_ bbls., 1st 24 hrs.  
WELL ACIDIZED No  
WELL FRACTURED No

CASING CEMENTED	SIZE	No. Ft.	Date
COAL WAS ENCOUNTERED AT		FEET	INCHES
<u>335</u>	<u>FEET 36</u>	INCHES	FEET INCHES
<u>360</u>	<u>FEET 24</u>	INCHES	FEET INCHES

RESULT AFTER TREATMENT

ROCK PRESSURE AFTER TREATMENT

Fresh Water \_\_\_\_\_ Feet Salt Water 1025 - 2 BPH Feet HW 1175

Formation	Color	Hard or Soft	Top	Bottom	Oil, Gas or Water	Depth	Remarks
Dirt			0	60			
Sand			60	200			
Slate			200	240			
Lime & Sand			240	335			
Coal			335	338			
Lime			338	360			
Coal			360	362			
Lime			362	380			
Blk. Slate			380	400			
Lime & Slate			400	762			
Brown Slate			762	780			
Lime & Slate			780	840			
Sand			840	915			
Blk. Lime			915	923			
Sand			923	960			
Lime & Sand			960	1015			
Salt Sand			1015	1267			
Slate			1267	1270			
Maxton			1270	1310			
Slate			1310	1337			
Little Lime			1337	1361			
Slate Break			1361	1363			
White Shell			1363	1377			
Pencil Cave			1377	1392			
Big Lime			1392	1492			
Big Injun			1492	1542			
Total Depth							

*(Handwritten signatures)*

