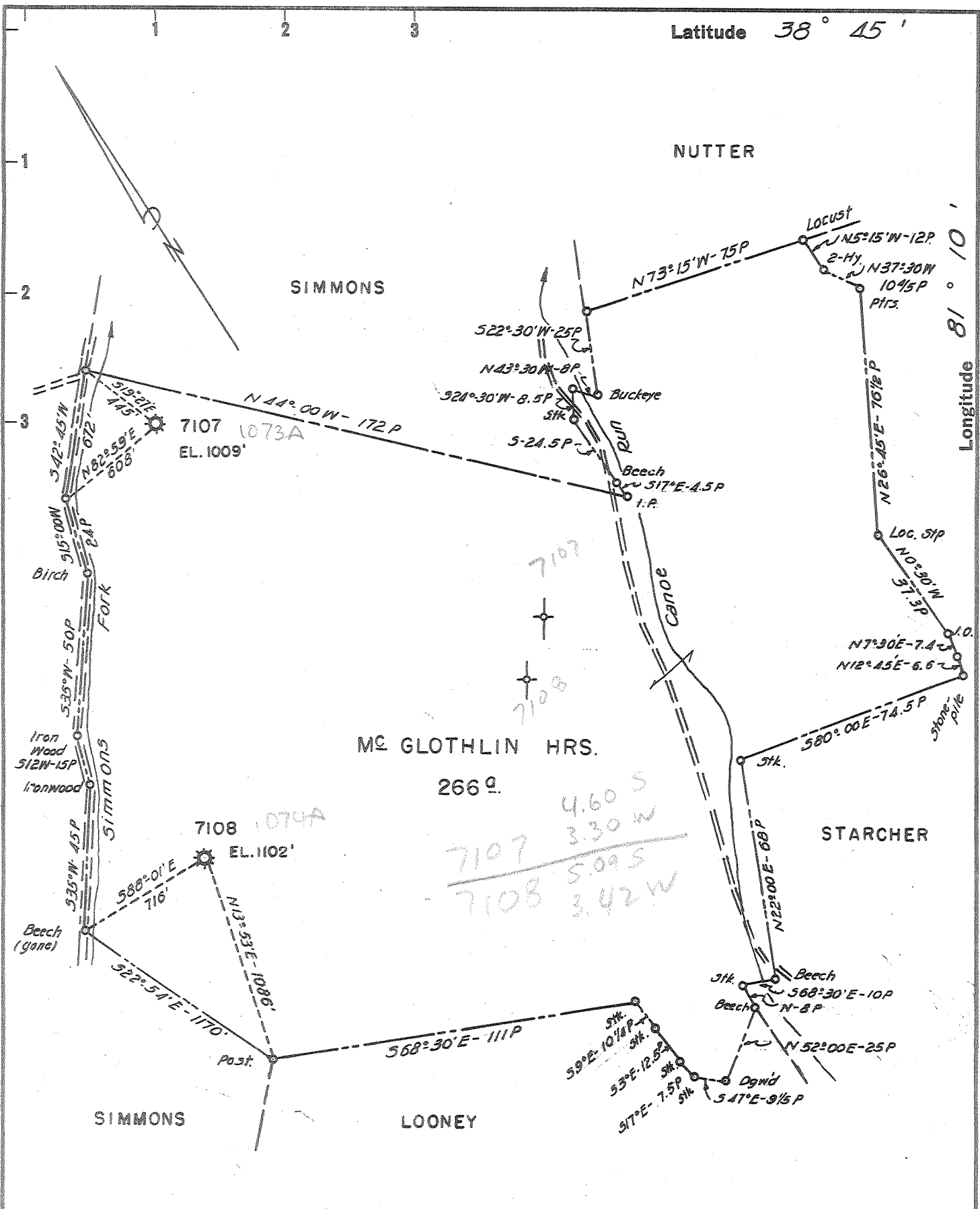


Latitude 38° 45'

Longitude 81° 10'



New Location ..
 Drill Deeper
 Abandonment..... 7107-7108

FORMERLY H.N.G.CO.WELLS 7107 - 7108

Company CARL E. SMITH, INC.
 Address SANDYVILLE, W. VA.
 Farm Mc GLOTHLIN HRS.
 Tract _____ Acres 266 Lease No. 42816
 Well (Farm) No. _____ Serial No. 7107
 Elevation (Spirit Level) AS SHOWN
 Quadrangle OTTER
 County ROANE District SMITHFIELD
 Engineer HENRY A. HAIN
 Engineer's Registration No. 3150
 File No. C.S-1,2-60 Drawing No. _____
 Date 3-26-60 Scale 1"=40 POLES

STATE OF WEST VIRGINIA
 DEPARTMENT OF MINES
 OIL AND GAS DIVISION
 CHARLESTON

see microfilm for well records

WELL LOCATION MAP
 ROANE... 1073-A... 7107
 FILE NO. ROANE 7072-A 7108

+ Denotes location of well on United States Topographic Maps, scale 1 to 62,500, latitude and longitude lines being represented by border lines as shown.

- Denotes one inch spaces on border line of original tracing.