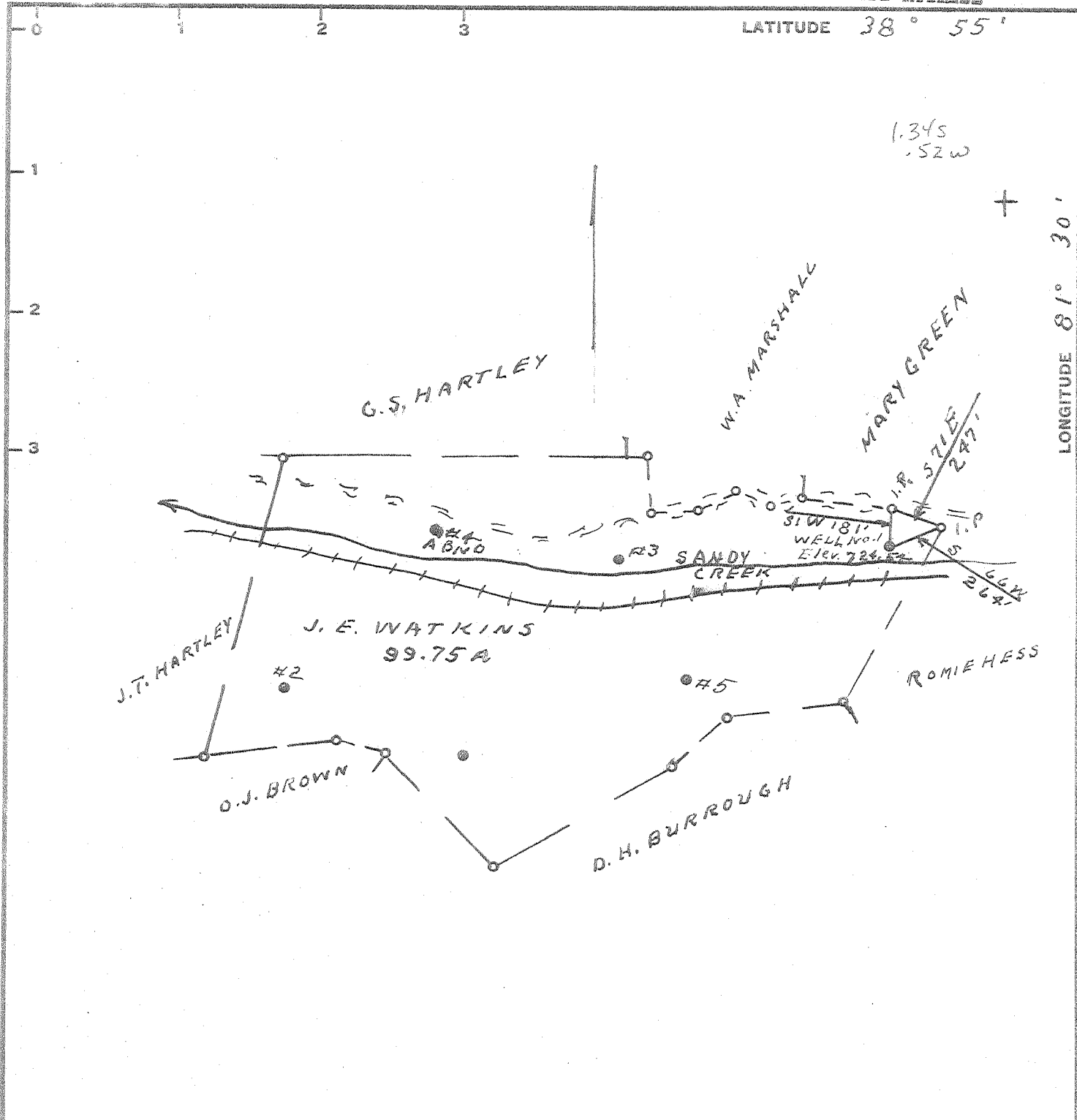


LATITUDE 38° 55'



Minimum Error of Closure 1' IN 200'

Source of Elevation WELL NO. 4 698.31

- Fracture
- New Location
- Drill Deeper
- Abandonment 8-1-68

I, the undersigned, hereby certify that this map is correct to the best of my knowledge and belief and shows all the information required by paragraph 6 of the rules and regulations of the oil and gas section of the mining laws of West Virginia.

Signed: L. F. Dyer
Squares: N S E W

Map No.

Company W. L. HEETER
 Address SPENCER, W. VA
 Farm ~~J. E. WATKINS~~ C. P. Davis
 Tract _____ Acres 99.75 Lease No. _____
 Well (Farm) No. 1 Serial No. _____
 Elevation (Spirit Level) 724.54
 Quadrangle RIPLEY EC
 County ROANE District REEDY
 Engineer L. F. Dyer
 Engineer's Registration No. 804
 File No. _____ Drawing No. _____
 Date 7-31-68 Scale 1" = 40 FEET

STATE OF WEST VIRGINIA
 DEPARTMENT OF MINES
 OIL AND GAS DIVISION
 CHARLESTON
 see Microfilm for Well Record
WELL LOCATION MAP
 FILE NO. Roa-1140-A

+ Denotes location of well on United States Topographic Maps, scale 1 to 62,500, latitude and longitude lines being represented by border lines as shown.

- Denotes one inch spaces on border line of original tracing.