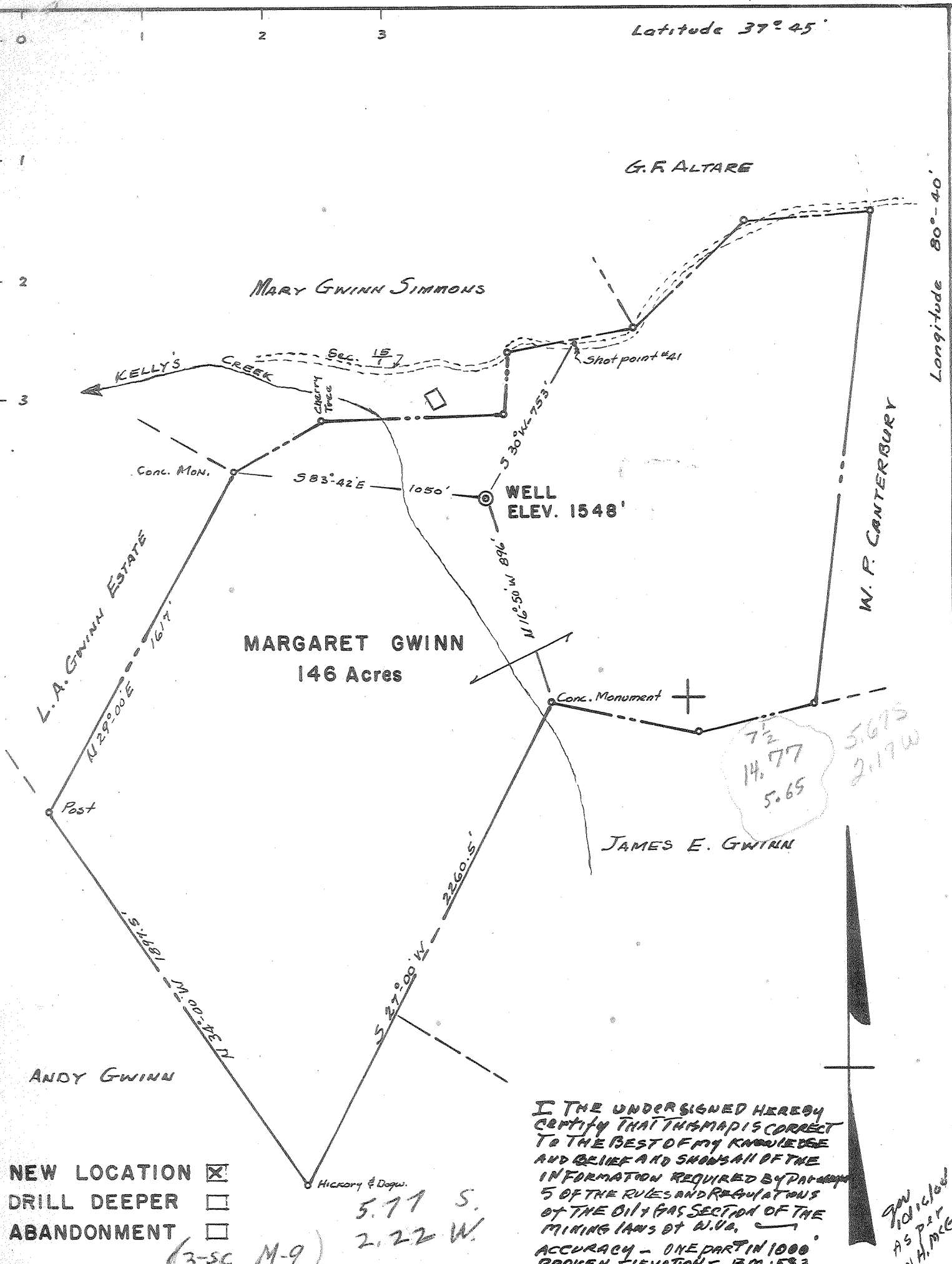


Latitude 37° 45'

Longitude 80° 40'



Company ANCHOR GAS COMPANY  
 Address 1221 Empire Bldg, Pittsburgh, Penn.  
 Farm MARGARET GWINN  
 Tract Acres 146 Lease No.  
 Well (Farm) No. 1 Serial No.  
 Elevation (Spirit Level) 1548 FT.  
 Quadrangle ALDERSON - NW  
 County SUMMERS Dist. TALCOTT  
 Engineer Don H. McGuire  
 Engineer's Registration No. 3088  
 File No. Drawing No.  
 Date 6-12-64 Scale 1" = 500'

STATE OF WEST VIRGINIA  
 DEPARTMENT OF MINES  
 OIL AND GAS DIVISION  
 CHARLESTON

WELL LOCATION MAP  
 FILE NO. Sum-6

+ DENOTES WELL LOCATION ON U.S. TOPO. MAP SCALE 1 TO 62,500, LAT. & LONGITUDE AS SHOWN ON BORDER LINES.  
 — DENOTES ONE INCH SPACES ON BORDER OF THE ORIGINAL TRACING.

Don H. McGuire  
 AS PER  
 DON H. MCGUIRE



STATE OF WEST VIRGINIA  
DEPARTMENT OF MINES  
OIL AND GAS DIVISION

Rotary   
Spudder   
Cable Tools   
Storage

Location  
5.77 S. 37°45'  
2.22 W 80°40'

Quadrangle ALDERSON

Permit No. SUM-6

WELL RECORD

Oil or Gas Well DRY  
(KIND)

Company ANCHOR GAS COMPANY  
Address 1208 EMPIRE BUILDING  
Farm Margaret Gwinn Acres 146  
Location (waters) KELLY'S CREEK  
Well No. 1 Elev. 1548'  
District Talcott County SUMMERS  
The surface of tract is owned in fee by Margaret Gwinn & Mary Gwinn Simmons c/o 1st Nat'l. Bank Alderson, W. Va.  
Mineral rights are owned by Same

Address \_\_\_\_\_  
Drilling commenced October 20, 1964  
Drilling completed October 23, 1964  
Date Shot From \_\_\_\_\_ To \_\_\_\_\_  
With \_\_\_\_\_

Open Flow /10ths Water in \_\_\_\_\_ Inch  
/10ths Merc. in \_\_\_\_\_ Inch  
Volume Dry Hole Cu. Ft.  
Rock Pressure \_\_\_\_\_ lbs. \_\_\_\_\_ hrs.  
Oil \_\_\_\_\_ bbls., 1st 24 hrs.  
WELL ACIDIZED \_\_\_\_\_  
WELL FRACTURED NOT FRACTURED

Casing and Tubing	Used in Drilling	Left in Well	Packers
Size			Kind of Packer
16			
13-3/8	68'	68'	
10			Size of
8 3/8 - 5/8	1120'	1120'	
6 3/4			Depth set
5 3/16			
3			Perf. top
2			Perf. bottom
Liners Used			Perf. top
			Perf. bottom

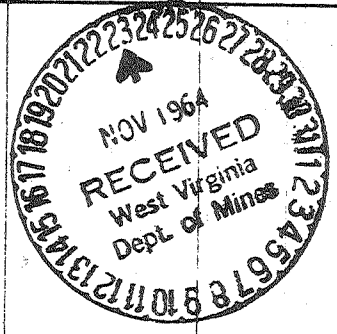
CASING CEMENTED \_\_\_\_\_ SIZE \_\_\_\_\_ No. Ft. \_\_\_\_\_ Date \_\_\_\_\_  
COAL WAS ENCOUNTERED AT \_\_\_\_\_ FEET \_\_\_\_\_ INCHES  
\_\_\_\_\_ FEET \_\_\_\_\_ INCHES FEET \_\_\_\_\_ INCHES  
\_\_\_\_\_ FEET \_\_\_\_\_ INCHES FEET \_\_\_\_\_ INCHES

RESULT AFTER TREATMENT

ROCK PRESSURE AFTER TREATMENT NONE

Fresh Water 60', 510, 660, 810, Feet Salt Water \_\_\_\_\_ Feet

Formation	Color	Hard or Soft	Top	Bottom	Oil, Gas or Water	Depth	Remarks
Lime	gray-dark	Med. hard	0	1329			
Shale	dark red	soft to med.	1329	1355			
Shale & Silstone	gray	soft	1355	1436			
Siltstone	gray	med. hard	1436	1510			
Shale & Siltstone R & G	Soft & Med.	1510	1550	1570			
Sand	Lt. gray	med. hard	1550	1570			
lime	gray	med. hard	1570	1590			
sand & silt		gray hard	1590	1630			
Sand	Lt. gray	hard	1630'	1650'			
Siltstone	gray	hard	1650'	1870'			
Silty shale	gray	soft	1870'	1910'			
Sand	lt. gray	med. Hard	1910'	1930'			Top Berea sand 1913'
Shale	gray	soft	1930'	4570'			
Sand	lt. gray	med hard	4570'	4590'			
Shale	gray	soft	4590'	6060'			Top Marcellus 6053'
Shale	black	soft	6060'	6170'			
Lime	dark gray	Med hard.	x2 6170'	6195'			Top of Ononaga Sand 6174'
Chert	Olive gray	hard	6195'	6215'			
Siltstone	dk. gray	med. hard	6215'	6250'			
Sand	gray	hard	6250'	6270'			show of gas
Sandy lime	lt. gray	med hard	6270'	6300'			top of Oriskany 6258'
limy sand	lt. tan	hard	6300'	6340'			top Helderberg 6268'
lime & chert	dk. gray	hard	6340'	6360'			
Sandy lime	gray	med.	6360'	6405'			top sillirian 6406
Siltstone	gray	med.	6405'	6430'			Sillirian
Shale	dk. gray	soft	6430'	6445'			
dolsiltstone	olive gr.	med.	6445'	6451'			
TOTAL DEPTH				6451'			



6174  
1548  
-4626  
6258  
1548  
4710

(over) 519