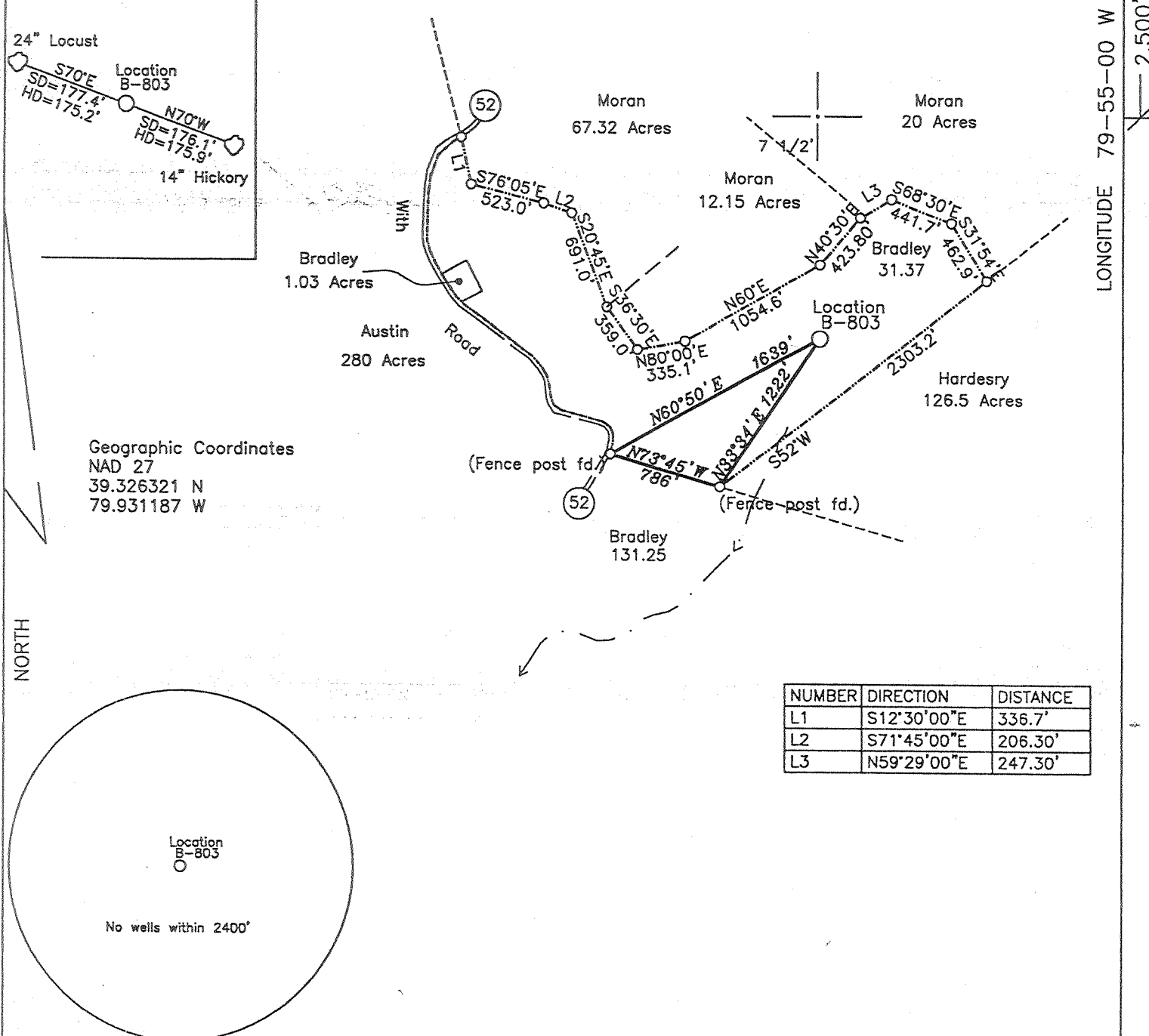
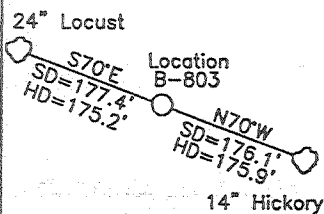
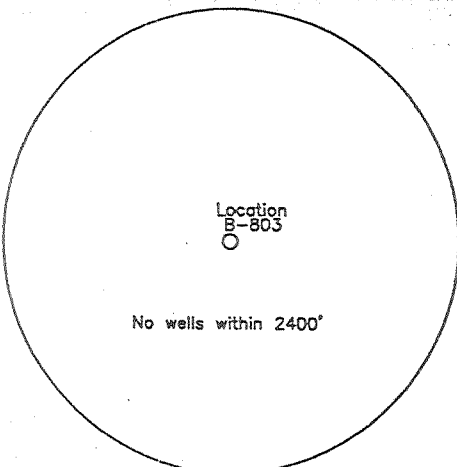


References



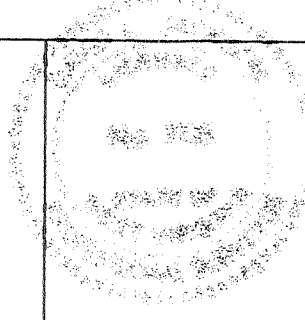
NUMBER	DIRECTION	DISTANCE
L1	S12°30'00"E	336.7'
L2	S71°45'00"E	206.30'
L3	N59°29'00"E	247.30'



(+) DENOTES LOCATION OF WELL ON UNITED STATES TOPOGRAPHIC MAPS

FILE NO. \_\_\_\_\_  
 DRAWING NO. 1  
 SCALE 1" = 1000'  
 MINIMUM DEGREE OF ACCURACY 1 in 200  
 PROVEN SOURCE OF ELEVATION GPS  
submeter unit

I THE UNDERSIGNED, HEREBY CERTIFY THAT THIS PLAT IS CORRECT TO THE BEST OF MY KNOWLEDGE AND BELIEF AND SHOWS ALL THE INFORMATION REQUIRED BY LAW AND THE REGULATIONS ISSUED AND PRESCRIBED BY THE DEPARTMENT OF ENERGY.  
 (SIGNED) David Berry  
 R.P.E. \_\_\_\_\_ L.L.S. 708



STATE OF WEST VIRGINIA  
 Division of Environmental Protection  
 OFFICE OF OIL AND GAS

DATE September 28, 2007  
 OPERATOR'S WELL NO. B-803  
 API WELL NO. \_\_\_\_\_

WELL TYPE: OIL \_\_\_\_\_ GAS X LIQUID INJECTION \_\_\_\_\_ WASTE DISPOSAL \_\_\_\_\_  
 (IF "GAS") PRODUCTION X STORAGE \_\_\_\_\_ DEEP \_\_\_\_\_ SHALLOW X

LOCATION: ELEVATION 1,603' WATER SHED Glade Run  
 DISTRICT Knottsville COUNTY Taylor  
 QUADRANGLE Thornton 7 1/2'

SURFACE OWNER Wesley J. Bradley ACREAGE 81.87 ac.  
 OIL & GAS ROYALTY OWNER Wesley J. Bradley LEASE ACREAGE 83 ac.  
 LEASE NO. 2636

PROPOSED WCRK: DRILL X CONVERT \_\_\_\_\_ DRILL DEEPER \_\_\_\_\_ REDRILL \_\_\_\_\_ FRACTURE OR STIMULATE \_\_\_\_\_ PLUG OFF OLD FORMATION \_\_\_\_\_ PERFORATE NEW FORMATION X OTHER PHYSICAL CHANGE IN WELL (SPECIFY) \_\_\_\_\_

PLUG AND ABANDON \_\_\_\_\_ CLEAN OUT AND REPLUG \_\_\_\_\_  
 TARGET FORMATION Benson ESTIMATED DEPTH 4,209'  
 WELL OPERATOR Berry Energy Inc. DESIGNATED AGENT David Berry  
 ADDRESS P.O. Box 5 Clarksburg, WV 26302-0005 ADDRESS P.O. Box 5 Clarksburg, WV 26302-0005

Hiram U-4

NOV 03 2007

747 1089

WR-35  
Rev (5-01)

DATE: 5/8/2008  
API #: 47-091-01089

State of West Virginia  
Department of Environmental Protection  
Office of Oil and Gas

Well Operator's Report of Well Work

Farm name: Bradley Operator Well No.: B803

LOCATION: Elevation: 1603' Quadrangle: Thornton

District: Knottsville County: Taylor

Latitude: \_\_\_\_\_ Feet South of \_\_\_\_\_ Deg. \_\_\_\_\_ Min. \_\_\_\_\_ Sec.  
Longitude \_\_\_\_\_ Feet West of \_\_\_\_\_ Deg. \_\_\_\_\_ Min. \_\_\_\_\_ Sec.

Company: Berry Energy, Inc.

	Casing & Tubing	Used in drilling	Left in well	Cement fill up Cu. Ft.
Address: P.O Box 5	7"	1080'	1080'	To surface
Clarksburg, WV 26301				
Agent: David Berry				
Inspector: Bill Hatfield				
Date Permit Issued: 10/29/2007				
Date Well Work Commenced: 2/9/2008				
Date Well Work Completed: 2/15/2008				
Verbal Plugging:				
Date Permission granted on:				
Rotary <input checked="" type="checkbox"/> Cable <input type="checkbox"/> Rig <input type="checkbox"/>				
Total Depth (feet): 4528'				
Fresh Water Depth (ft.): 90'				
Salt Water Depth (ft.): None				
Is coal being mined in area (N/Y)? No				
Coal Depth: 619'				

RECEIVED  
Office of Oil & Gas  
MAR 21 2011  
WV Department of  
Environmental Protection

OPEN FLOW DATA

Producing formation To Be Deepened Pay zone depth (ft) \_\_\_\_\_  
Gas: Initial open flow 26 MCF/d Oil: Initial open flow \_\_\_\_\_ Bbl/d  
Final open flow 0 MCF/d Final open flow \_\_\_\_\_ Bbl/d  
Time of open flow between initial and final tests \_\_\_\_\_ Hours  
Static rock Pressure \_\_\_\_\_ psig (surface pressure) after \_\_\_\_\_ Hours

Second producing formation \_\_\_\_\_ Pay zone depth (ft) \_\_\_\_\_  
Gas: Initial open flow \_\_\_\_\_ MCF/d Oil: Initial open flow \_\_\_\_\_ Bbl/d  
Final open flow \_\_\_\_\_ MCF/d Final open flow \_\_\_\_\_ Bbl/d  
Time of open flow between initial and final tests \_\_\_\_\_ Hours  
Static rock Pressure \_\_\_\_\_ psig (surface pressure) after \_\_\_\_\_ Hours

NOTE: ON BACK OF THIS FORM PUT THE FOLLOWING: 1). DETAILS OF PERFORATED INTERVALS, FRACTURING OR STIMULATING, PHYSICAL CHANGE, ETC. 2). THE WELL LOG WHICH IS A SYSTEMATIC DETAILED GEOLOGICAL RECORD OF ALL FORMATIONS, INCLUDING COAL ENCOUNTERED BY THE WELLBORE.

Signed: David B. Berry  
By: David Berry  
Date: 5/8/2008

B803 con't

No Perforations

No Stimulation

---

Geologic Record

Sand and Shale	0	619	1/4" stream fresh water @ 90'
— Coal	619	628	
Shale and Sand	628	1236	
— Little Lime	1236	1249	
— Pencil Cave	1249	1276	
— Big Lime	1276	1468	
Sand and Shale	1468	4247	
— Benson Sand	4247	4252	Gas show @ 4113' 26M
Shale and Siltstone	4252	4528	T.D. (10' KB)