

PDC MOUNTAINEER, LLC WELL NO. RODNEY J. ANDERSON 3HM

7,479' TOP HOLE
10,779' BOTTOM HOLE
LATITUDE 39° 20' 00"

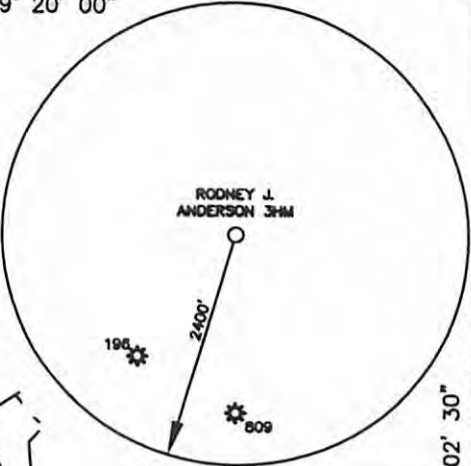
NOTES:
-PLAT ORIENTATION, CORNERS, AND WELL REFERENCES ARE BASED UPON THE GRID NORTH MERIDIAN FOR THE WV STATE PLANE COORDINATE SYSTEM, NORTH ZONE NAD 27. WELL LOCATION REFERENCE TIES ARE BASED UPON THE MAGNETIC MERIDIAN.

-THERE APPEARS TO BE NO WATER WELLS LOCATED WITHIN 1000' OF WELL 3HM.

COALQUEST DEV., LLC
TM 9 PAR 57.1
DB 284 PG 500
120 AC ±

COALQUEST DEV., LLC
TM 9 PAR 63.3
DB 284 PG 500
85.45 AC ±

COALQUEST DEV., LLC
TM 9 PAR 65
DB 284 PG 500
9.45 AC ±



CHARLES F. HUNSINGER
TM 9 PAR 58
DB 128 PG 351
91.45 AC ±

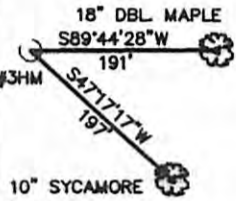
BOTTOM HOLE
25' SOUTH OF
LEASE LINE

ROBERT B. MOORE Jr.
& MARY WOLFE
TM 9 PAR 62
WB 15 PG 489
54 AC ±

MARRY ELIZABETH
MOORE
TM 9 PAR 66
WB 15 PG 489
16.15 AC ±

DIANE L. FLECK
TM 9 PAR 59
WB 30 PG 144
28.5 AC ±

REFERENCES



ROBERT F. COLEBANK
TM 9 PAR 60
DB 234 PG 33
23.5 AC ±

DANIEL K. NESTOR
TM 9 PAR 61
DB 287 PG 248
4 AC ±

JERRY P. &
SANDRA J. ROSS
TM 9 PAR 71
DB 178 PG 516
54 AC ±

**WELL NO. 3HM
TOP HOLE**

STATE PLANE COORDINATES
(NAD 27 NORTH ZONE-FOOT)
N: 288891.5539
E: 1838212.5100
LAT: 39° 17' 28.44"
LON: 80° 04' 05.13"

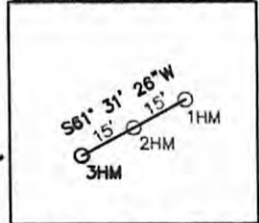
STATE PLANE COORDINATES
(NAD 83 NORTH ZONE-METER)
N: 88005.301
E: 551010.231
UTM COORDINATES
(NAD 83-METER)
N: 4407980.718
E: -458608.121

**WELL NO. 3HM
BOTTOM HOLE**

STATE PLANE COORDINATES
(NAD 27 NORTH ZONE-FOOT)
N: 292397.8863
E: 1835936.4082
LAT: 39° 18' 04.86"
LON: 80° 04' 47.10"

STATE PLANE COORDINATES
(NAD 83 NORTH ZONE-METER)
N: 89134.886
E: 550011.690
UTM COORDINATES
(NAD 83-METER)
N: 4409212.819
E: -458477.428

RODNEY J. ANDERSON WELLS



ROBERT L. &
JULIE AMRSTRONG
TM 12 PAR 1
DB 304 PG 530
65.375 AC ±

ROBERT L.
CARPENTER SR.
TM 12 PAR 3
WB 33 PG 141
117.94 AC ±

ROBERT F.
COLEBANK
TM 12 PAR 5
DB 234 PG 33
25.3 AC ±

JERRY P. &
SANDRA J. ROSS
TM 12 PAR 7
DB 216 PG 575
138.53 AC ±

⊙ DENOTES LOCATION OF
WELL ON UNITED STATES
TOPOGRAPHIC MAP

FP CORNER (FOUND)
JEFFREY & DEBRA
BUSS
TM 12 PAR 32
DB 307 PG 392
1.25 AC ±

WATER WELL

⊙ WATER WELL



ERIC E. WARDEN &
LORI L. SNELLING
TM 12 PAR 33.1
DB 285 PG 682
218.70 AC ±

MELISSA HAYES
TM 12 PAR 31
DB 244 PG 197
42.87 AC ±

JERRY P. &
SANDRA J. ROSS
TM 12 PAR 30
DB 239 PG 540
64.93 AC ±

CARIE L. WAGNER
TM 12 PAR 29
DB 123 PG 157
58.4 AC ±

SHEPHERD
TM 12 PAR 30.1
DB 252 PG 477
.51 AC ±

Daniel L. Wheeler, P.S. 530

THE UNDERSIGNED, HEREBY CERTIFY THAT THIS PLAT IS CORRECT TO THE BEST OF MY KNOWLEDGE AND BELIEF AND SHOWS ALL THE INFORMATION REQUIRED BY LAW AND THE REGULATIONS ISSUED AND PRESCRIBED BY THE DIVISION OF ENVIRONMENTAL PROTECTION.

FILE NO. 050-4344

SCALE: 1"=1000'

MINIMUM DEGREE OF
ACCURACY: 1 in 2500

PROVEN SOURCE OF ELEVATION:
OPUS SURVEY GRADE GPS

STATE OF WEST VIRGINIA
DIVISION OF ENVIRONMENTAL PROTECTION
OFFICE OF OIL & GAS

DATE JANUARY, 2011

OPERATOR'S WELL NO. RODNEY J. ANDERSON NO. 3HM

API WELL NO.

47 - 091 - 01214H
STATE COUNTY PERMIT

CANCELLED

WELL TYPE: OIL GAS LIQUID INJECTION WASTE DISPOSAL (IF "GAS"), PRODUCTION STORAGE DEEP SHALLOW

LOCATION: ELEVATION: 1380' WATER SHED: LONG RUN

DISTRICT: COURTHOUSE COUNTY: TAYLOR

QUADRANGLE: GRAFTON 7.5' ACREAGE: 138.5 AC ±

SURFACE OWNER: RODNEY J. ANDERSON, ET. UX. LEASE ACREAGE: 520.09 AC ±

OIL & GAS ROYALTY OWNER: RODNEY J. ANDERSON, ET. AL. LEASE NO.



OIL AND GAS DIVISION
30 COLUMBIA BLVD.
CLARKSBURG, WV 26301
PHONE 304-624-4108

PROPOSED WORK: DRILL CONVERT DRILL DEEPER REDRILL FRACTURE OR STIMULATE
PERFORATE NEW FORMATION PLUG OF OLD FORMATION OTHER PHYSICAL CHANGE IN WELL (SPECIFY)

PLUG AND ABANDON CLEAN OUT AND REPLUG
TARGET FORMATION: MARCELLUS SHALE ESTIMATED DEPTH: 7,685' TVD / 14,500' MD

WELL OPERATOR: PDC MOUNTAINEER, LLC DESIGNATED AGENT: LARRY E. CARDER
ADDRESS: 120 GENESIS BOULEVARD ADDRESS: 120 GENESIS BOULEVARD
BRIDGEPORT, WV 26330 BRIDGEPORT, WV 26330

07/04/2014