

**PDC MOUNTAINEER, LLC  
WELL NO. COALTRAIN 9HM**

NOTES:  
-PLAT ORIENTATION, CORNERS, AND WELL REFERENCES ARE BASED UPON THE GRID NORTH MERIDIAN FOR THE WV STATE PLANE COORDINATE SYSTEM, NORTH ZONE  
-NAD 27. WELL LOCATION REFERENCE TIES ARE BASED UPON THE MAGNETIC MERIDIAN.

-THERE APPEARS TO BE NO WATER WELLS LOCATED WITHIN 1000' OF WELL 9HM.

PATRIOT MINING COMPANY  
TM 8 PAR 8  
DB 233 PG 133  
143.04 AC ±

47-091-0761  
JAMES A. KINSEY OR  
BEVERLY A. KINSEY  
TM 13 PAR 1  
DB 224 PG 98  
229.69 AC ±

47-091-1077

47-091-1080

47-091-1078

PATRIOT MINING COMPANY  
TM 8 PAR 3  
DB 233 PG 133  
224 AC ±

47-091-0666

MARTHA JEAN STOUT  
TM 13 PAR 64  
DB WB 28 PG 377  
61.67 AC ±

47-091-1104

FLOIE E. WILLIAMS ET AL  
TM 13 PAR 39  
WB 17 PG 91  
4.5 AC ±

RONALD E. SINES  
TM 13 PAR 40  
DB 137 PG 163  
10.1 AC ±

DENOTES LOCATION OF WELL ON UNITED STATES TOPOGRAPHIC MAP



Daniel L. Wheeler, P.S. 530

PATRIOT MINING COMPANY  
TM 8 PAR 9  
DB 233 PG 133  
35 AC ±

TM 8 PAR 26  
1.1 AC ±  
47-091-0708

GARY L. &  
MINA LOUISE ROSS  
TM 8A PAR 5  
DB 150 PG 482

PATRIOT MINING CO. INC.  
TM 8 PAR 10.1  
DB 223 PG 113  
9.10 AC ±

PATRIOT MINING COMPANY  
TM 8 PAR 10  
DB 233 PG 133  
212.44 AC ±

47-091-0707

47-091-1105

COALQUEST DEVELOPMENT  
TM 13 PAR 4  
DB 284 PG 500  
47.29 AC ±

47-091-0626

47-091-0709

COALQUEST DEVELOPMENT  
TM 13 PAR 38  
DB 284 PG 500  
83 AC ±

COALQUEST DEVELOPMENT  
TM 13 PAR 37  
DB 284 PG 500  
49.75 AC ±

RONALD E. SINES  
TM 13 PAR 41  
WB 20 PG 451  
2 AC ±

VIRGIL L. BROWN  
TM 13 PAR 70  
DB 254 PG 190  
9.64 AC ±

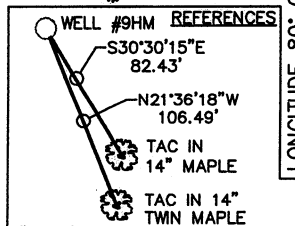
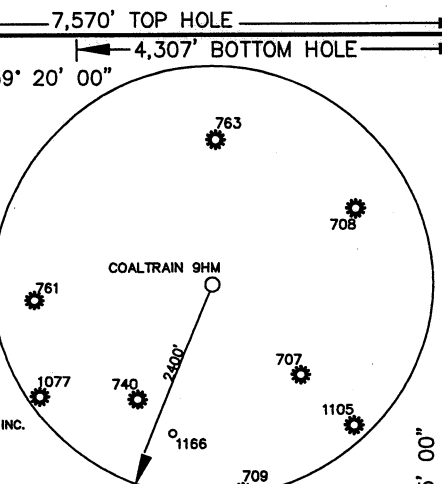
COALQUEST DEVELOPMENT  
TM 13 PAR 36  
DB 284 PG 500  
34.5 AC ±

BRIAN K. PURKEY  
TM 13 PAR 69  
DB 254 PG 321  
12.07 AC ±

HAL SPRINGER &  
JENNIE FINDLEY  
TM 4 PAR 4  
DB 222 PG 96  
178 AC ±

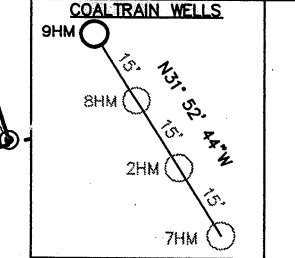
STAN & MICHAEL LEACH  
TM 13 PAR 35  
DB 287 PG 276  
46 AC ±

BOTTOM HOLE  
25' NORTH OF  
LEASE LINE



WELL NO. 9HM  
TOP HOLE  
STATE PLANE COORDINATES  
(NAD 27 NORTH ZONE)  
N: 290886.6960  
E: 1827252.2218  
LAT: 39° 17' 49.36"  
LONG: 80° 06' 37.44"  
STATE PLANE COORDINATES  
(NAD 83 NORTH ZONE--METERS)  
N: 88674.283  
E: 547364.713  
UTM COORDINATES  
(NAD 83 NORTH ZONE--METERS)  
N: 4409082.420  
E: -459199.468  
LAT: 39° 17' 49.69"  
LON: 80° 06' 36.73"

WELL NO. 9HM  
BOTTOM HOLE  
STATE PLANE COORDINATES  
(NAD 27 NORTH ZONE)  
N: 284402.1352  
E: 1830515.7990  
LAT 39° 16' 45.49"  
LONG: 80° 05' 55.38"  
STATE PLANE COORDINATES  
(NAD 83 NORTH ZONE--METERS)  
N: 86697.845  
E: 548359.421  
UTM COORDINATES  
(NAD 83 METERS)  
N: 4406960.599  
E: -458423.821  
LAT: 39° 16' 45.82"  
LON: 80° 05' 54.67"



FILE NO. 050-4286

SCALE: 1"=1000'

MINIMUM DEGREE OF ACCURACY: 1 in 2500

PROVEN SOURCE OF ELEVATION: OPUS SURVEY GRADE GPS

STATE OF WEST VIRGINIA  
DIVISION OF ENVIRONMENTAL PROTECTION  
OFFICE OF OIL & GAS

DATE JULY , 2011

OPERATOR'S WELL NO. COALTRAIN NO. 9HM

BH API WELL NO.

47 - 091 - 01524H  
STATE COUNTY PERMIT

WELL TYPE: OIL  GAS  LIQUID INJECTION  WASTE DISPOSAL  (IF "GAS"), PRODUCTION  STORAGE  DEEP  SHALLOW

LOCATION: ELEVATION: 1273' WATER SHED: SAND LICK RUN OF SIMPSON CREEK

DISTRICT: COURTHOUSE COUNTY: TAYLOR

QUADRANGLE: GRAFTON 7.5' ACREAGE: 212.44 AC ±

SURFACE OWNER: PATRIOT MINING COMPANY, INC. LEASE ACREAGE: 400.98 AC ±

OIL & GAS ROYALTY OWNER: GLEN J. AREW ET AL LEASE NO.



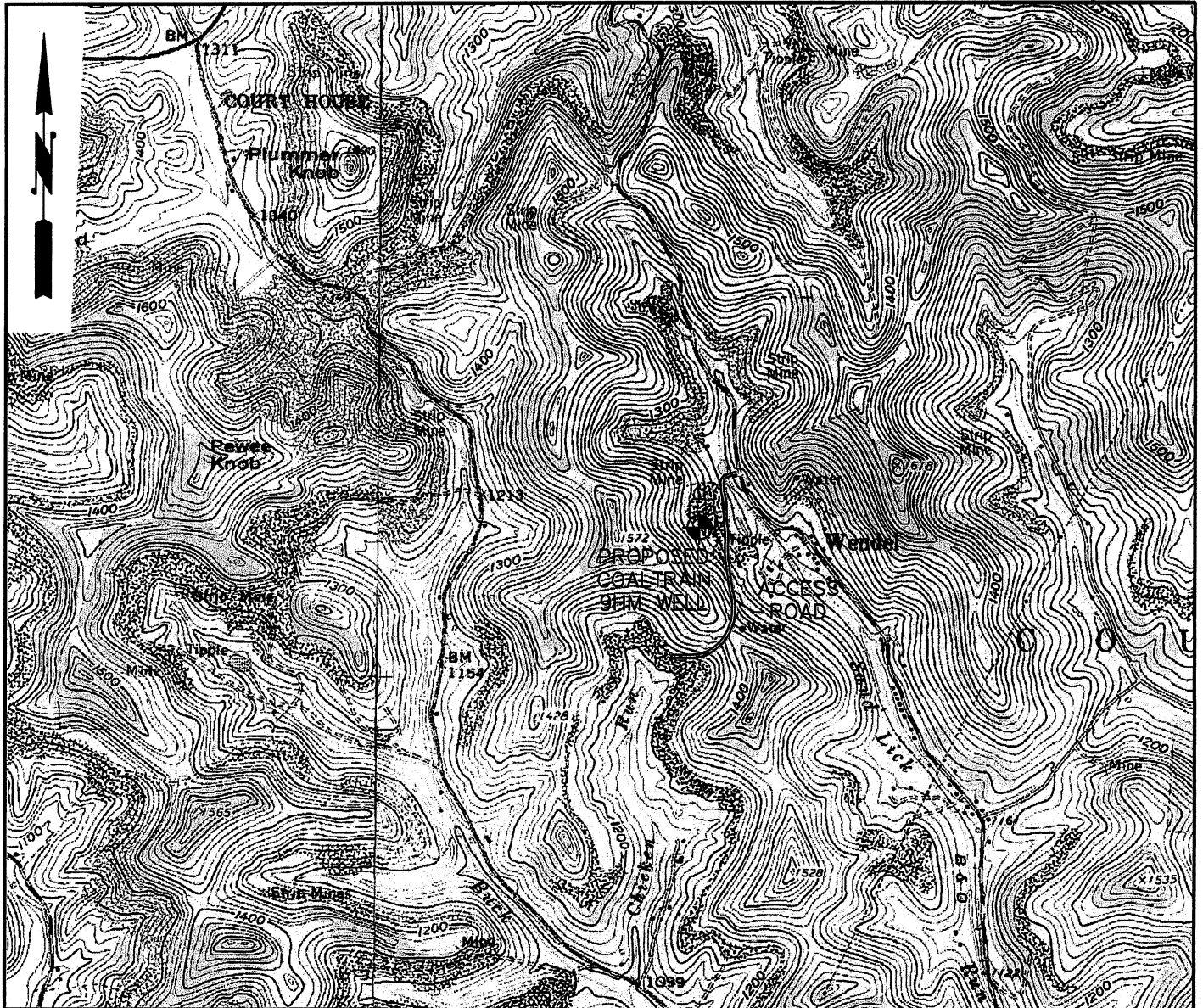
PROPOSED WORK: DRILL  CONVERT  DRILL DEEPER  REDRILL  FRACTURE OR STIMULATE

PERFORATE NEW FORMATION  PLUG OFF OLD FORMATION  OTHER PHYSICAL CHANGE IN WELL (SPECIFY)

PLUG AND ABANDON CLEAN OUT AND REPLUG  
TARGET FORMATION: MARCELLUS SHALE ESTIMATED DEPTH: 7,675 TVD / 15,200' MD

WELL OPERATOR: PDC MOUNTAINEER LLC DESIGNATED AGENT: Jamie Haga  
ADDRESS: 120 GENESIS BOUL VARD BRIDGEPORT, WV 26330 ADDRESS: 120 GENESIS BOULEVARD BRIDGEPORT, WV 26330





**LEGEND**

- WELL =
- DRILL SITE =
- WELL SPOT =
- SPRING =
- BUILDING =
- COMPACTED FILL WALLS =
- PIT CUT WALLS =
- PIT WASTE =
- GRAVEL =
- SILT FENCE =
- PROPERTY LINE =
- EXISTING FENCE =
- PLANNED FENCE =
- ROAD =
- OPEN DITCH =
- STREAM LINE =
- CROSS DRAIN =
- FILTER STRIP =
- DIVERSION =



**WELL RECLAMATION PLAN  
PDC COALTRAIN 9HM  
GRAFTON 7.5 QUADRANGLE**

2000'                      0                      2000'                      4000'



PHONE (304) 624-4108 **THRASHER ENGINEERS** (FAX) (304) 624-7831  
CIVIL, ENVIRONMENTAL, AND CONSULTING  
30 COLUMBIA BOULEVARD - CLARKSBURG, WV 26301

WELL RECLAMATION PLAN FOR PDC COALTRAIN 9HM  
SCALE: NOT TO SCALE  
DRAWN: DBS  
CHECKED:  
APPROVED:

SHEET No. **2**

**PROJECT# 050-4300**