

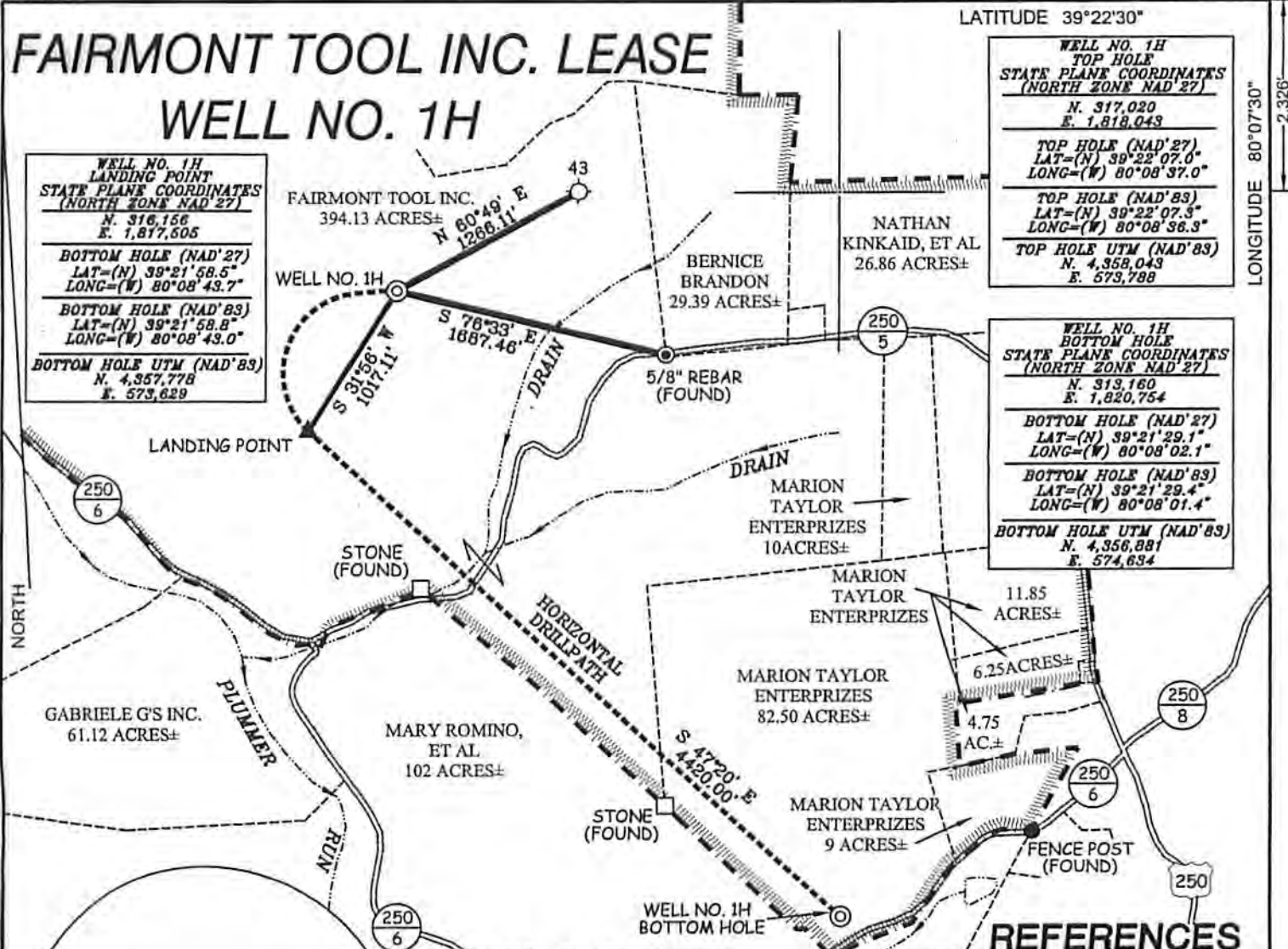
# FAIRMONT TOOL INC. LEASE WELL NO. 1H

LATITUDE 39°22'30"  
LONGITUDE 80°07'30"

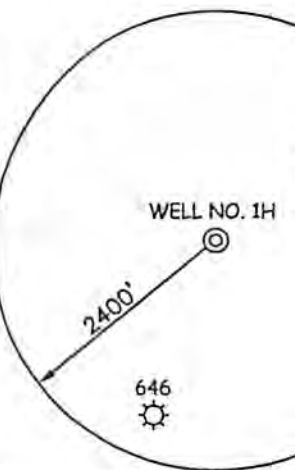
**WELL NO. 1H  
LANDING POINT  
STATE PLANE COORDINATES  
(NORTH ZONE NAD '27)**  
N. 316,156  
E. 1,817,505  
**BOTTOM HOLE (NAD'27)**  
LAT=(N) 39°21'58.5"  
LONG=(W) 80°08'43.7"  
**BOTTOM HOLE (NAD'83)**  
LAT=(N) 39°21'58.8"  
LONG=(W) 80°08'43.0"  
**BOTTOM HOLE UTM (NAD'83)**  
N. 4,357,778  
E. 573,629

**WELL NO. 1H  
TOP HOLE  
STATE PLANE COORDINATES  
(NORTH ZONE NAD '27)**  
N. 317,020  
E. 1,818,043  
**TOP HOLE (NAD'27)**  
LAT=(N) 39°22'07.0"  
LONG=(W) 80°08'37.0"  
**TOP HOLE (NAD'83)**  
LAT=(N) 39°22'07.3"  
LONG=(W) 80°08'36.3"  
**TOP HOLE UTM (NAD'83)**  
N. 4,358,043  
E. 573,788

**WELL NO. 1H  
BOTTOM HOLE  
STATE PLANE COORDINATES  
(NORTH ZONE NAD '27)**  
N. 313,160  
E. 1,820,754  
**BOTTOM HOLE (NAD'27)**  
LAT=(N) 39°21'29.1"  
LONG=(W) 80°08'02.1"  
**BOTTOM HOLE (NAD'83)**  
LAT=(N) 39°21'29.4"  
LONG=(W) 80°08'01.4"  
**BOTTOM HOLE UTM (NAD'83)**  
N. 4,356,881  
E. 574,834



**WELL NO. 1H  
LANDING POINT  
STATE PLANE COORDINATES  
(NORTH ZONE NAD '27)**  
N. 316,156  
E. 1,817,505  
**BOTTOM HOLE (NAD'27)**  
LAT=(N) 39°21'58.5"  
LONG=(W) 80°08'43.7"  
**BOTTOM HOLE (NAD'83)**  
LAT=(N) 39°21'58.8"  
LONG=(W) 80°08'43.0"  
**BOTTOM HOLE UTM (NAD'83)**  
N. 4,357,778  
E. 573,629



### NOTES ON SURVEY

1. TIES TO WELLS, REFERENCES, AND CORNERS ARE BASED ON GRID NORTH FOR THE WV STATE PLANE COORDINATE SYSTEM NORTH ZONE NAD '27.
2. LEASE BOUNDARY SHOWN HEREON TAKEN FROM DEED BOOK 276 PAGE 193 AND ADJOINING DEEDS.
3. SURFACE OWNER AND ADJOINER INFORMATION TAKEN FROM THE ASSESSOR AND COUNTY CLERK RECORDS OF TAYLOR COUNTY IN JULY, 2011.
4. WELL COORDINATES ESTABLISHED BY DGPS(SURVEY GRADE).

### REFERENCES



I THE UNDERSIGNED, HEREBY CERTIFY THAT THIS PLAT IS CORRECT TO THE BEST OF MY KNOWLEDGE AND BELIEF AND SHOWS ALL THE INFORMATION REQUIRED BY LAW AND THE REGULATIONS ISSUED AND PRESCRIBED BY THE DIVISION OF ENVIRONMENTAL PROTECTION.

P.S. 677  
*Gregory A. Smith*



(+) DENOTES LOCATION OF WELL ON UNITED STATES TOPOGRAPHIC MAPS.  
 DATE SEPTEMBER 13, 20 11  
 OPERATORS WELL NO. FAIRMONT TOOL INC. #1H  
 API WELL NO. 47-091-01270H  
 STATE COUNTY PERMIT

MINIMUM DEGREE OF ACCURACY 1/2500 FILE NO. 7590P1HR (348-26)  
 PROVEN SOURCE OF ELEVATION DGPS (SURVEY GRADE) SCALE 1" = 1,000'

STATE OF WEST VIRGINIA  
 DIVISION OF ENVIRONMENTAL PROTECTION  
 OFFICE OF OIL AND GAS

WELL TYPE: OIL  GAS  LIQUID INJECTION  WASTE DISPOSAL  IF "GAS" PRODUCTION  STORAGE  DEEP  SHALLOW

LOCATION: ELEVATION 1,379' WATERSHED TRIBUTARY OF PLUMMER RUN  
 DISTRICT BOOTH'S CREEK COUNTY TAYLOR QUADRANGLE ROSEMONT 7.5'

SURFACE OWNER FAIRMONT TOOL INC. ACREAGE 394.13±  
 ROYALTY OWNER NATHAN KINCAID, ET AL LEASE ACREAGE 394.13±, 82.50±, & 9±

PROPOSED WORK: DRILL  CONVERT  DRILL DEEPER  REDRILL  FRACTURE OR STIMULATE  PLUG OFF OLD FORMATION  PERFORATE NEW FORMATION  PLUG AND ABANDON  CLEAN OUT AND REPLUG  OTHER

PHYSICAL CHANGE IN WELL (SPECIFY) \_\_\_\_\_ TARGET FORMATION MARCELLUS  
 ESTIMATED DEPTH TMD-12,251' - TVD-7,412'

WELL OPERATOR DIVERSIFIED RESOURCES DESIGNATED AGENT ROBERT HUTSON  
 ADDRESS P.O. BOX 381087 ADDRESS P.O. BOX 167  
BIRMINGHAM, AL 35238-1087 LUMBERPORT, WV 26384