



PDC MOUNTAINEER

Armstrong-Reynolds 3HM
 Armstrong - Reynolds Unit
 20' RKB - 1409' GL @ 1429.0usft (Pioneer 63)
 Latitude: 39° 18' 10.896 N
 Longitude: 80° 7' 51.418 W
 Northing: 293105.48
 Easting: 1821451.86
 Design #2

PHOENIX
 TECHNOLOGY SERVICES



91-01279



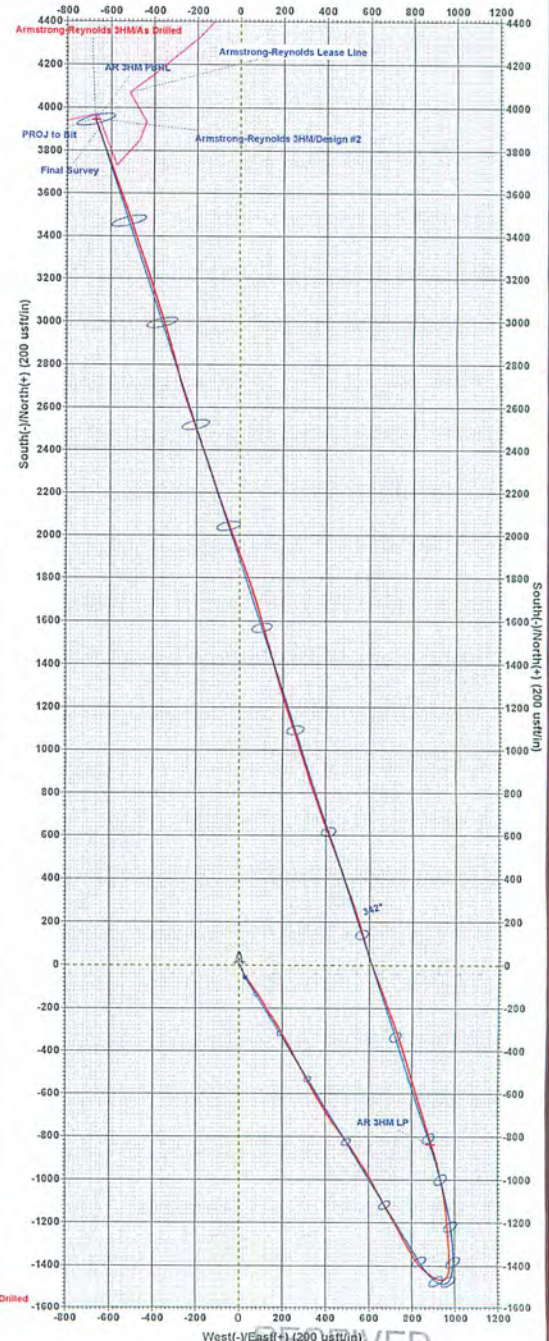
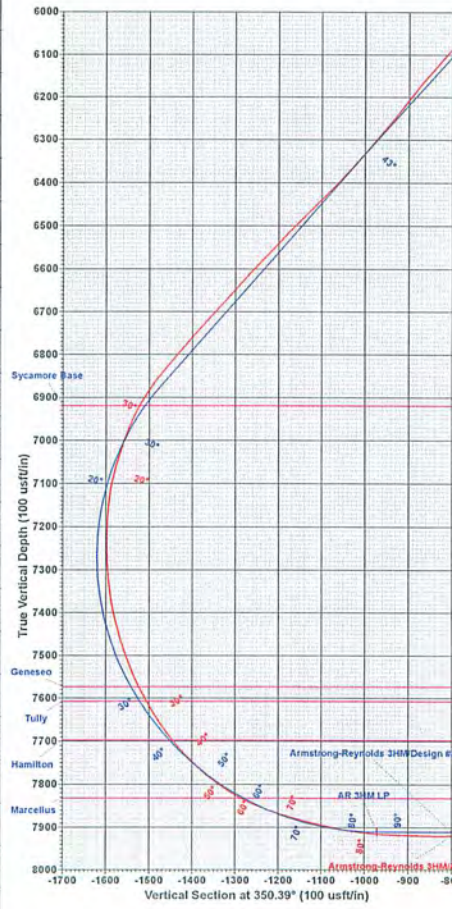
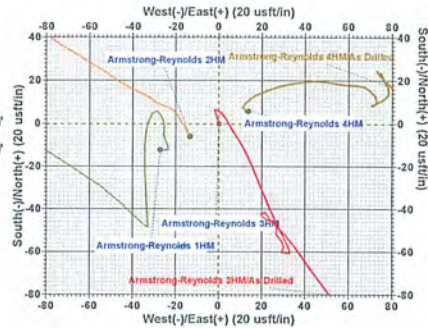
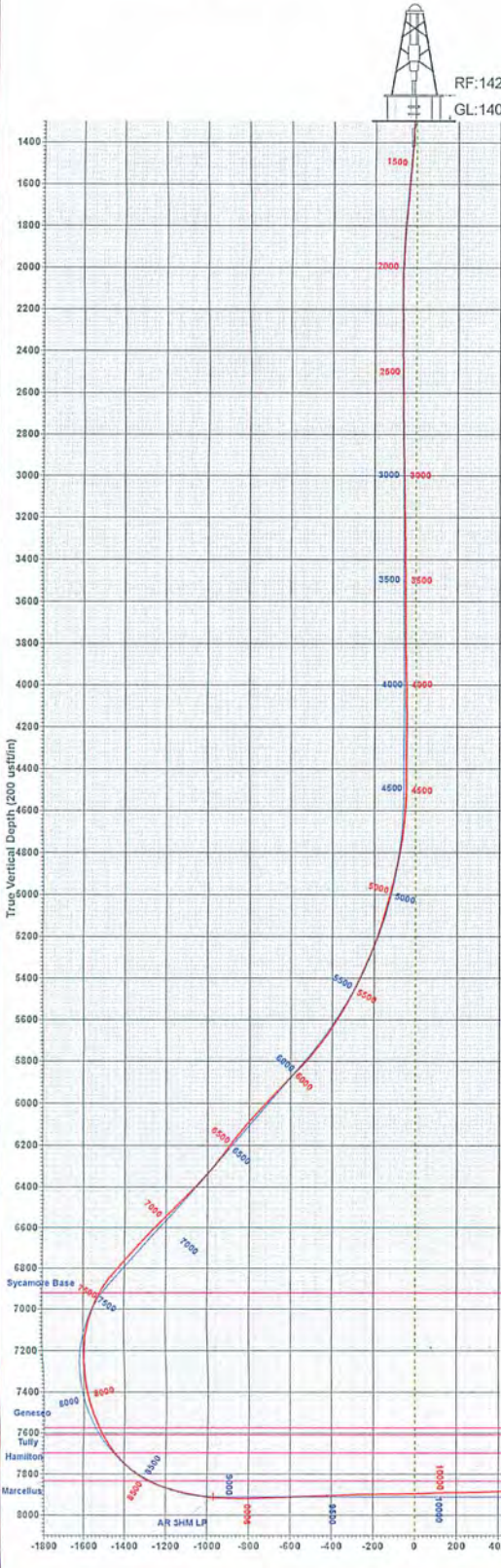
Azimuths to Grid North
 True North: 0.40°
 Magnetic North: -8.50°
 Magnetic Field
 Strength: 52310.25nT
 Dip Angle: 66.81°
 Date: 9/25/2013
 Model: IGRF2010_14

SECTION DETAILS

Sec	MD	Inc	Azi	TVD	+N-S	+E-W	Diag	TFace	VSec	Target
1	2833.0	1.10	333.70	2829.9	-55.1	29.4	0.00	0.00	-59.2	
2	2909.0	1.10	333.70	2905.9	-53.8	28.7	0.00	0.00	-57.8	
3	2954.0	0.00	0.00	2950.9	-53.3	28.5	2.00	180.00	-57.3	
4	4500.0	0.00	0.00	4496.9	-53.3	28.5	0.00	0.00	-57.3	
5	5942.5	43.28	148.76	5906.1	-497.4	297.9	3.00	148.76	-540.1	
6	7407.1	43.28	148.76	6872.5	-1355.8	818.6	0.00	0.00	-1473.4	
7	8872.2	60.00	342.00	7910.0	-835.6	855.0	9.00	-162.08	-971.8	AR 3HM LP
8	11399.9	90.00	342.00	7910.0	3945.2	-668.0	0.00	0.00	4001.3	AR 3HM PBHL

FORMATION TOP DETAILS

TVDP	MDPath	Formation
6919.0	7468.5	Sycamore Base
7573.0	8175.4	Genesee
7907.0	8315.2	Tully
7697.0	8329.1	Hamilton
7832.0	8550.0	Marcellus



DESIGN TARGET DETAILS

Name	TVD	+N-S	+E-W	Northing	Easting	Latitude	Longitude	Shape
AR 3HM LP	7910.0	-835.6	885.0	292269.65	1822336.66	39° 18' 2.698 N	80° 7' 40.096 W	Point
AR 3HM PBHL	7910.0	3945.2	-668.0	297050.68	1820783.899	18° 49.843 N	80° 8' 0.270 W	Point

RECEIVED
 Office of Oil and Gas
 JUN 04 2014

PA Department of
 Environmental Protection

06/06/2014

Phoenix Technology Services
 Foster Plaza 5, Suite 200, 650 Victory Dr
 Pittsburgh, PA 15220