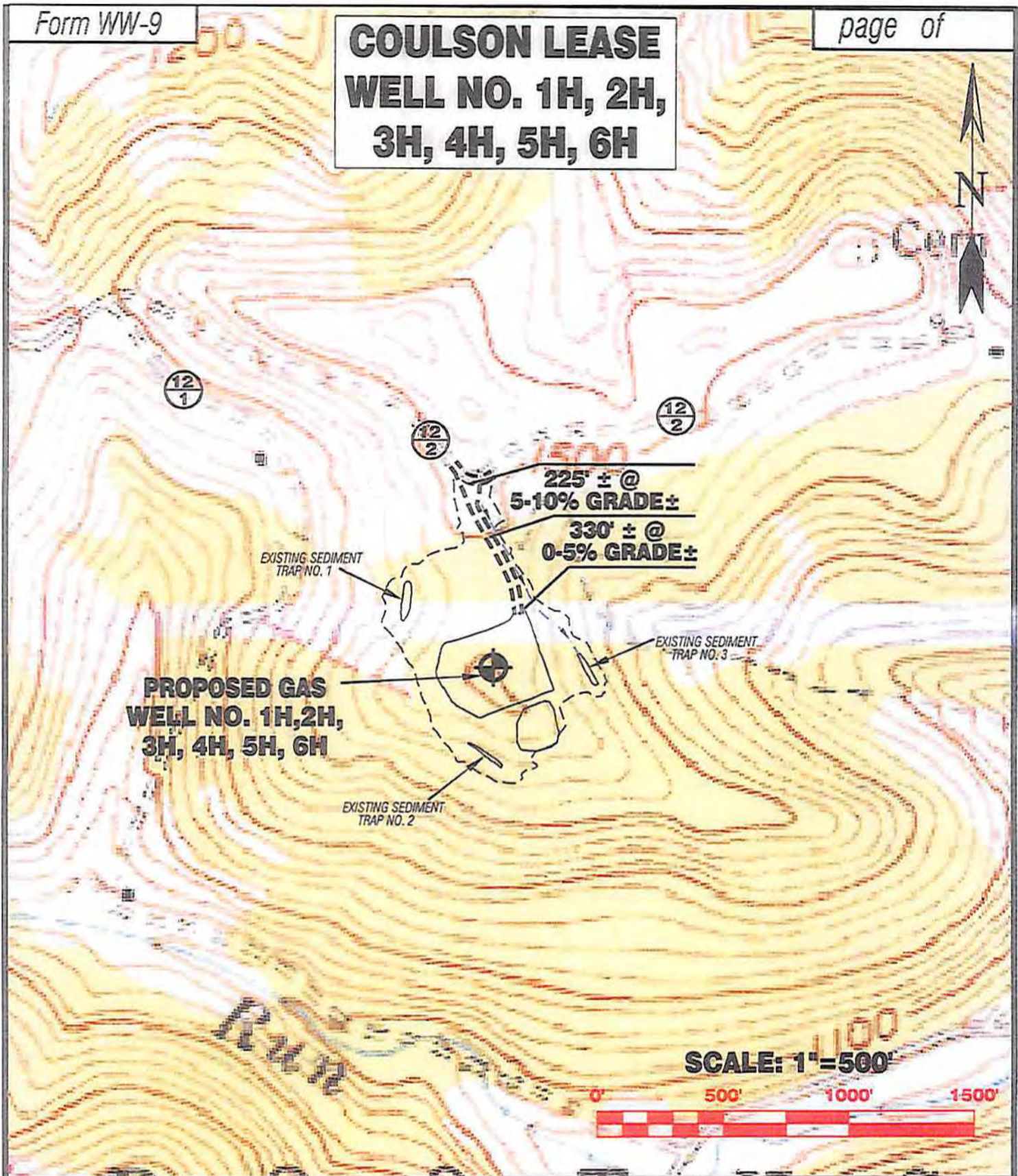
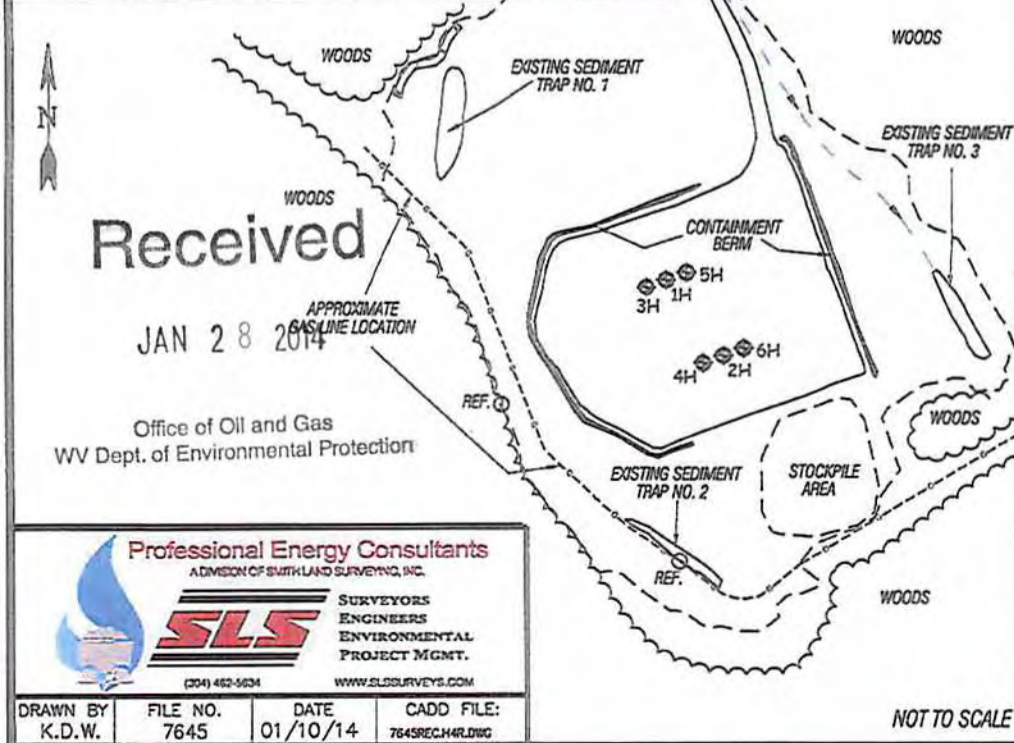


COULSON LEASE WELL NO. 1H, 2H, 3H, 4H, 5H, 6H



Detail Sketch for Proposed Well No. 1H, 2H, 3H, 4H, 5H, 6H



ALL ROADS SHOWN HEREON ARE EXISTING UNLESS OTHERWISE NOTED AND SHALL BE MAINTAINED IN ACCORDANCE WITH WV D.E.P. OIL AND GAS BMP MANUAL ENTRANCES AT COUNTY/STATE ROADS SHALL BE MAINTAINED IN ACCORDANCE WITH WV D.O.T. REGULATION. SEPARATE PERMITS MAY BE REQUIRED BY THE D.O.T.

116 1-17-16

SEDIMENT BASINS (TRAPS) AND APPROPRIATE EROSION CONTROL BARRIERS ARE TO BE CONSTRUCTED AT ALL CULVERT AND CROSS DRAIN INLETS AND OUTLETS AS REQUIRED IN THE WV D.E.P. OIL AND GAS BMP MANUAL. FIELD CONDITIONS (ROCK OUTCROPS AND BEDROCK) MAY PROHIBIT INLET TRAPS BEING INSTALLED. WHEN THESE CONDITIONS EXIST ADDITIONAL EROSION CONTROL MEASURES SHALL BE EVALUATED AND UTILIZED AS NEEDED.

EARTHWORK CONTRACTORS ARE RESPONSIBLE FOR NOTIFICATION TO THE OPERATOR AND INSPECTOR PRIOR TO ANY DEVIATION FROM THIS PLAN.

TEMPORARY SEED & MULCH ALL SLOPES AFTER CONSTRUCTION OF LOCATION.

CUT & STACK ALL MARKETABLE TIMBER.

STACKED BRUSH MAY BE USED FOR SEDIMENT CONTROL.

APPLICATIONS FOR SEPARATE PLC PERMITS ON THE ACCESS ROAD STREAM CROSSINGS HAVE BEEN PREPARED (IF APPLIES)

Ⓞ = EXISTING CULVERT Ⓞ = PROPOSED CULVERT 15" MIN. UNLESS OTHERWISE NOTED
Ⓞ = PROPOSED STREAM CROSSING Ⓞ = PROPOSED LIMITS OF DISTURBANCE

NOT TO SCALE

Received

JAN 28 2014

Office of Oil and Gas
WV Dept. of Environmental Protection

Professional Energy Consultants
A DIVISION OF SMITH LAND SURVEYING, INC.

SLS
SURVEYORS
ENGINEERS
ENVIRONMENTAL
PROJECT MGMT.

(204) 462-5634 WWW.SLSURVEYS.COM

DRAWN BY K.D.W.	FILE NO. 7645	DATE 01/10/14	CADD FILE: 7645RECH4R.DWG
--------------------	------------------	------------------	------------------------------

04/04/2014