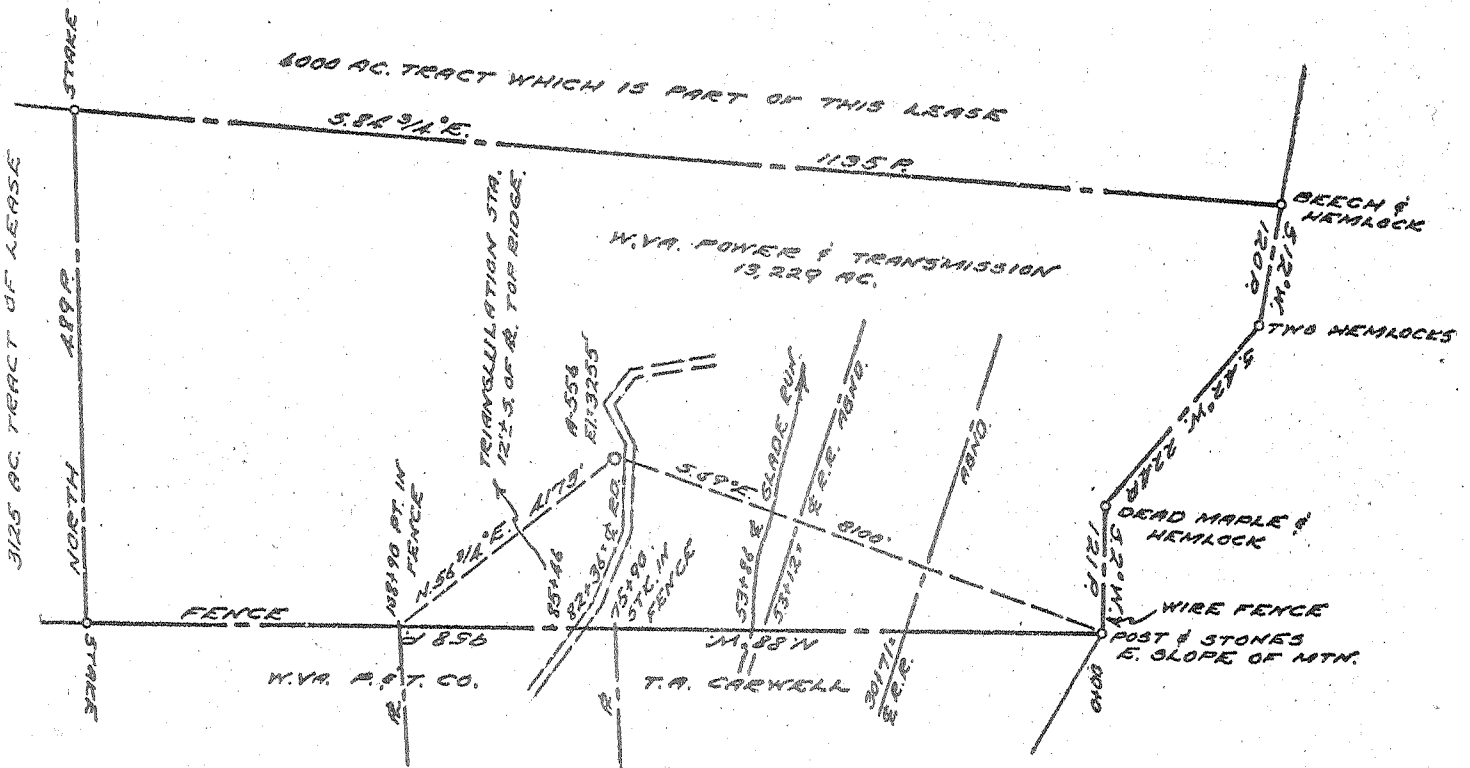


3.61-S
3.6650 of 39°10'
2.0710 of 79°20'
2.04-W
5 C (G-14)



Top Dev. 214?

COAL OWNED BY _____

NEW LOCATION...
DRILL DEEPER...
ABANDONMENT...

COMPANY CUMBERLAND & ALLEGHENY GAS
ADDRESS 800 UNION TRUST BLDG. PGH. PA.
FARM W.VA. POWER & TRANSMISSION
TRACT _____ ACRES 13,229 LEASE No. 7382
WELL (FARM) No. 1 SERIAL No. 556
ELEVATION (SPIRIT LEVEL) 3255'
QUADRANGLE DAVIS - C
COUNTY TUCKER DISTRICT DAVIS
ENGINEER Thomas E. Virgin M.
ENGINEER'S REGISTRATION No. 1503
FILE No. _____ DRAWING No. Y-15-598
DATE 12 JUNE 1957 SCALE 1" = 3000'

STATE OF WEST VIRGINIA
DEPARTMENT OF MINES
OIL AND GAS DIVISION
CHARLESTON

WELL LOCATION MAP

File No. JUC-25

+ DENOTES LOCATION OF WELL ON UNITED STATES TOPOGRAPHIC MAPS, SCALE 1 TO 62,500, LATITUDE AND LONGITUDE LINES BEING REPRESENTED BY BORDER LINES AS SHOWN.

- DENOTES ONE INCH SPACES ON BORDER LINE OF ORIGINAL TRACING.

5-0 & (287)

Deep well

Davis District, Tucker County, W. Va.

By Cumberland & Allegheny Gas Co., 800 Union Trust Bldg., Pittsburgh, 19, Pa.

Drilled under permit No-25; Davis quadrangle.
On 17,229 acres.
Elevation, 3255' L.

Drilling commenced April 27, 1958; completed July 15, 1958.

13" casing, 166' 1"; 10", 1406.98'; 8", 8206' 6".

Water at 10', 1 boiler per hour. Water at 1028', hole full. Water at 8378'.

Set 166' 1" of 13-3/16" (thds. off). Set 1395.98' of 10" (thds. off).

Set 8150' of 7" (thds. off).

5-58. Ran 13-3/16" casing.

6-13-58. Ran 10" casing. Cemented with 325 bags, bottom 10 joints jack
voided. 2 bags calcium chloride. Larkin cement shoe on bottom joint.

6-21-58. Moved out spudder.

6-29-58. Started drilling with rotary at a depth of 1063'.

7/3-4/58. Ran 7" casing. Cemented with 40 sacks Aquagel and 175 bags
uniflow cement. 1 - 7" Baker guide shoe. 1 - 7" Baker float collar
at 49.6' from bottom. Centralizers on jts. 1, 4, 7, 10, 13, plug
down 4/600 poig, hold 1500 poig. Circulation 12:30 p. m. - 2:30 p. m.
Cemented 2:20 p. m. - 2:35 p. m. Pump plug 2:37 p. m. - 3:05 p. m.

Key hole. Record to Dept. of Mines dated Aug. 28, 1958.

Record from Allen Sept. 7, 1958.

	Top.	Bottom.
Soil	0 -	8
Sand	8 -	73
Slate	73 -	100
Sand	100 -	147
Slate	147 -	197
lime	197 -	214
Red lime	214 -	290
Gritty lime	290 -	302
Red rock	302 -	340
Sand	340 -	365
Red lime	365 -	411
Gritty lime	411 -	475
Red rock and shale	475 -	583
lime	583 -	600
Sand	600 -	754
lime	754 -	905
Red lime	905 -	1075
lime and sand	1075 -	1102
Sand	1102 -	1120
lime and sand	1120 -	1143
Sand	1143 -	1168
lime and sand	1168 -	1190
Sand	1190 -	1237
Sand	1237 -	1260
Sand	1260 -	1315
Sand	1315 -	1346
lime and sand	1346 -	1380
Sand and lime	1380 -	1410
lime and sand	1410 -	1445
lime and sand	1445 -	1470
Red shale and limy sand	1470 -	1595
lime and sand	1595 -	1775
lime and sand	1775 -	1941

	Top.	Bottom.
lime and sand	1941	- 1945
lime and shale	1945	- 2210
hard lime and sand	2210	- 2232
lime and sand	2232	- 2356
lime and sand	2356	- 2460
lime and sand streak	2460	- 2620
lime and sand	2620	- 2805
lime and sand	2805	- 3015
sandy lime	3015	- 3140
lime and sand	3140	- 3385
lime and sand	3385	- 3650
lime and shale (Henson sand, 3650-3680')	3650	- 3815
lime and shale	3815	- 4130
lime and shale	4130	- 4410
limy shale	4410	- 4535
limy shale	4535	- 4695
limy shale	4695	- 4815
limy shale	4815	- 4880
lime shale	4880	- 5055
lime and shale	5055	- 5715
lime and shale, broken	5715	- 6020
shale	6020	- 6210
lime and shale	6210	- 6375
shale and lime	6375	- 6575
shale (gap between 6500' to 7000'; see note)	6575	- 6695
lime and shale	6695	- 6968
shale	6968	- 7080
lime and shale	7080	- 7190
limy shale	7190	- 7208
limy shale	7208	- 7290
limy shale	7290	- 7503
sally lime	7503	- 7539
lime and shale	7539	- 7735
lime and shale	7735	- 7880
lime and shale	7880	- 8059
brown rock	8059	- 8060
concretions lime	8060	- 8144
chert	8144	- 8165
shale	8165	- 8189
chert	8189	- 8210
shale	8210	- 8264
crystalline sand (water at 8378')	8264	-
Total depth		8410



STATE OF WEST VIRGINIA
DEPARTMENT OF MINES
OIL AND GAS DIVISION / 5

Quadrangle Davis

Permit No. TUC-25

WELL RECORD

Oil or Gas Well GAS
(KIND)

Company Cumberland and Allegheny Gas Company
Address 800 Union Trust Building, Pgh. 19, Penna.
Farm W. Va. Power & Transmission Acres 13,229
Location (waters) _____
Well No. 556 Elev. 3255'
District Davis County Tucker
The surface of tract is owned in fee by _____
Address _____
Mineral rights are owned by _____
Address _____
Drilling commenced April 27, 1958
Drilling completed July 15, 1958
Date Shot _____ From _____ To _____
With _____
Open Flow _____ /10ths Water in _____ Inch
_____ /10ths Merc. in _____ Inch
Volume _____ Cu. Ft.
Rock Pressure _____ lbs. _____ hrs.
Oil _____ bbls., 1st 24 hrs.
Fresh water _____ feet _____ feet
Salt water _____ feet _____ feet

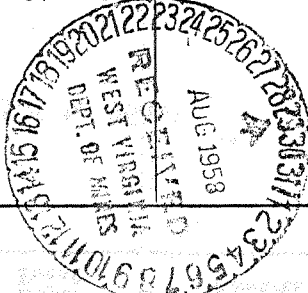
Casing and Tubing	Used in Drilling	Left in Well	Packers
Size			
13"	166'1"		Kind of Packer
10"	1406.98'		
8 1/4"	8206.5'		Size of
8 1/4"			
6 5/8"			Depth set
5 3/16"			
3"			Perf. top
2"			Perf. bottom
Liners Used			Perf. top
			Perf. bottom

CASING CEMENTED _____ SIZE _____ No. Ft. _____ Date _____

COAL WAS ENCOUNTERED AT _____ FEET _____ INCHES
_____ FEET _____ INCHES _____ FEET _____ INCHES
_____ FEET _____ INCHES _____ FEET _____ INCHES

Formation	Color	THICKNESS	Top	Bottom	Oil, Gas or Water	Depth Found	Remarks
Soil		8	0	8			
Sand		65	8	73	Water at 10'	1-bailer per hour.	
Slate		27	73	100			
Sand		47	100	147	Water at 102'	Hole full.	
Slate		50	147	197			
Lime		17	197	214	Set 166'1" of 13-3/8"	(Thds Off)	
Red Lime	Mmc	76	214	290	Set 1395.98' of 10-3/4"	(Thds Off)	
Gritty Lime		12	290	302	Set 8150' of 7"	(Thds Off)	
Red Rock		38	302	340			
Sand		25	340	365	5-3-58 Ran 13-3/8" Casing		
Red Lime		46	365	411	6-13-58 Ran 10-3/4" Casing. Cemented		
Gritty Lime		64	411	475	with 325 bags, bottom 10		
Red Rock & Shale		108	475	583	joints jack welded. 2 bags		
Lime		17	583	600	calcium chloride. Larkin		
Sand		154	600	754	cement shoe on bottom joint.		
Lime		151	754	905			
Red Lime		170	905	1075			
Lime & Sand		27	1075	1102	5-31-58 moved out spudder. 6-9-58		
Sand		18	1102	1120	started drilling with rotary at a		
Lime & Sand		23	1120	1143	depth of 1063'		
Sand		25	1143	1168			
Lime & Sand		22	1168	1190	7/3-4/58 Ran 7" Casing. Cement ed		
Sand		47	1190	1237	with 40 sacks aquagel and		
Sand		23	1237	1260	175 bags uniflow cement.		
Sand		55	1260	1315	1 - 7" Baker Guide Shoe.		
Sand		31	1315	1346	1 - 7" Baker Float Collar		
Lime & Sand		34	1346	1380	at 45.6' from bottom. Central -		
Sand & Lime		30	1380	1410	izers on jts. 1,4,7,10,13.		
Lime & Sand		35	1410	1445	plug down w/600 psig		
Lime & Sand		25	1445	1470	held 1500 psig		
Red Shale & Limey Sand		125	1470	1595	Circulation 12:40PM-2:30PM		
Lime & Sand		180	1595	1775	Cmtd 2:20PM-2:35PM		
Lime & Sand		166	1775	1941	Pump plug 2:37PM-3:05PM		
Lime and Sand		4	1941	1945			
Lime & Shale		265	1945	2210			
Hard Lime & Sand		22	2210	2232			
Lime & Sand		124	2232	2356			
Lime & Sand		104	2356	2460			
Lime & Sand Streak		160	2460	2620			
Lime & Sand		185	2620	2805			

(Over)



Deep Well

Formation	Color	THICKNESS	Top	Bottom	Oil, Gas or Water	Depth Found	Remarks
Lime & Sand		210	2805	3015			
Sandy Lime		125	3015	3140			
Lime & Sand		245	3140	3385			
Lime & Sand		265	3385	3650			
Lime & Shale		165	3650	3815	Benson Sand	3650' to 3680'	
Lime & Shale		315	3815	4130			
Lime & Shale		280	4130	4410			
Limy Shale		125	4410	4535			
Limy Shale		50	4535	4585			
Limy Shale		110	4585	5695			
Lime Shale		118	4695	4813			
Limy Shale		75	4813	4888			
Lime Shale		167	4888	5055			
Lime & Shale		660	5055	5715			
Lime & Shale - Broken		305	5715	6020			
Shale		190	6020	6210			
Lime & Shale		165	6210	6375			
Shale & Lime		198	6375	6573			
Shale		102	6573	6675	Gas between	6500' - 7000'	no test
Lime & Shale		293	6675	6968			
Shale		112	6968	7080			
Lime & Shale		110	7080	7190			
Limy Shale		18	7190	7208			
Limy Shale		82	7208	7290			
Limy Shale		213	7290	7503			
Tully		36	7503	7539			
Lime & Shale		196	7539	7735			
Lime & Shale		145	7735	7880			
Lime & Shale		179	7880	8059			
Brown Break		1	8059	8060			
Onondaga		84	8060	8144			
Chert		21	8144	8165			
Shale		24	8165	8189			
Chert		21	8189	8210			
Shale		36	8210	8246			
Oriskany			8246		Water at	8378'	
TOTAL DEPTH			8410				

175

3650
124410
Benson

80.60
32.55
-48.05

7539

RECORDED Date August 28, 1958
APPROVED CUMBERLAND AND ALLEGHENY GAS COMPANY, Owner
By *Walter A. Pinner*
(Title) Land Agent