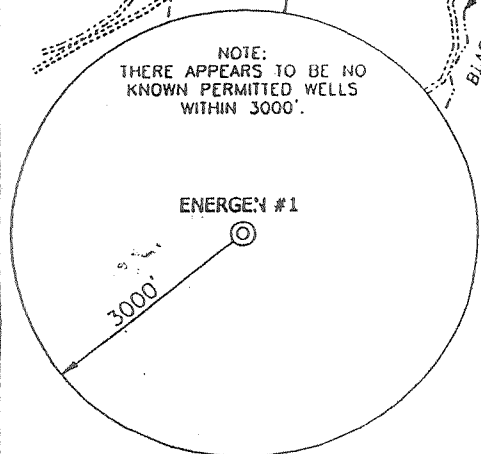
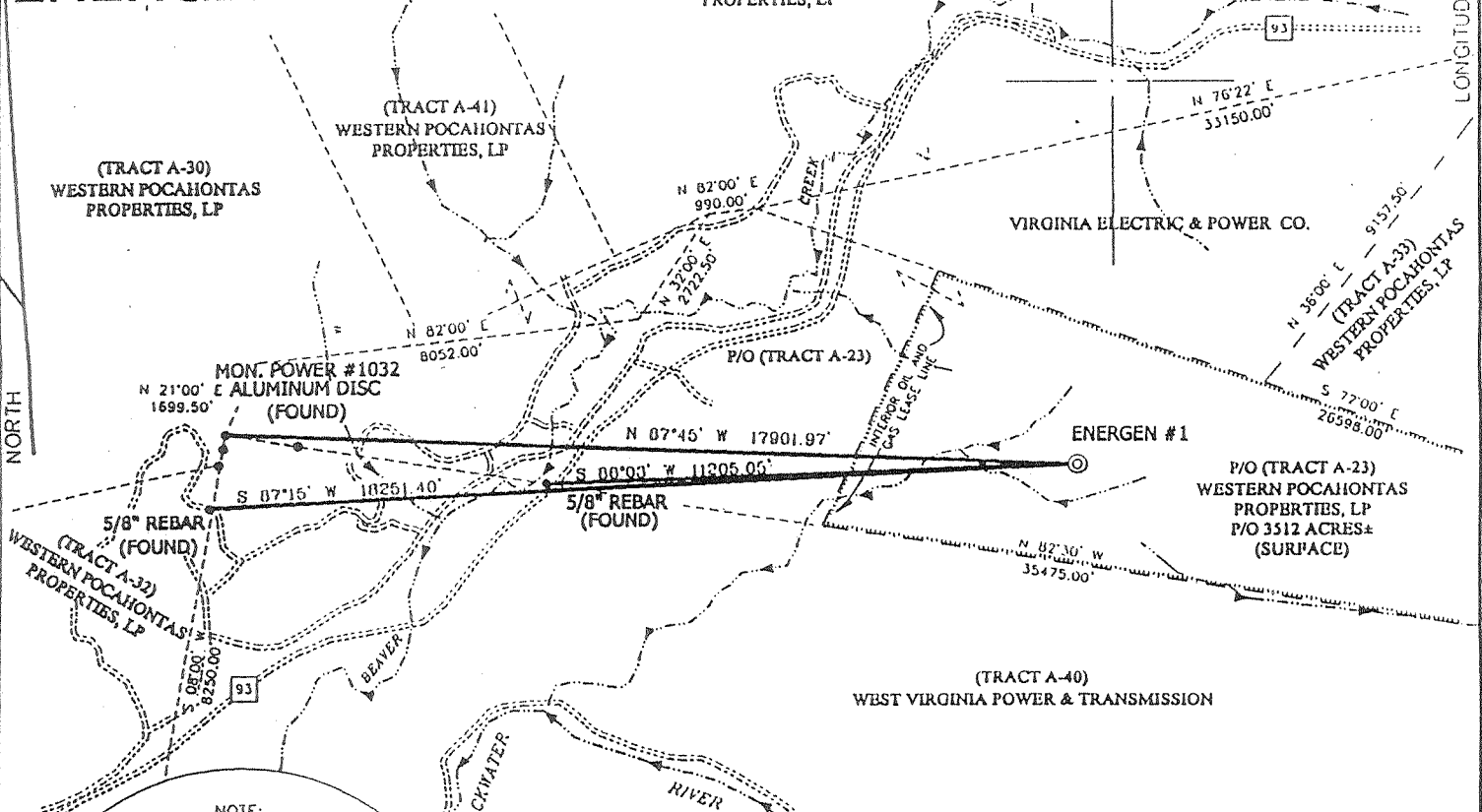


ENERGEN RESOURCES MAQ, INC. LEASE

2622.06 ACRES ±

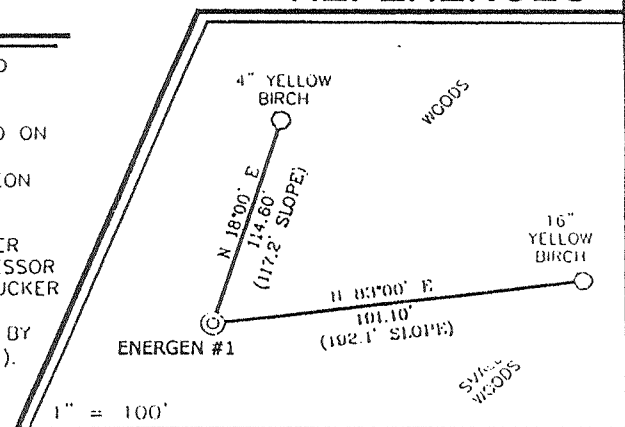
ENERGEN NO. 1



NOTES ON SURVEY

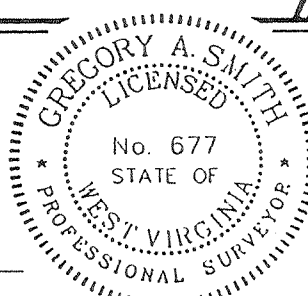
1. TIES TO CORNERS ARE BASED ON STATE PLANE GRID NORTH WV NORTH ZONE NAD '27.
2. TIES TO REFERENCES ARE BASED ON MAGNETIC NORTH 5/12/99.
3. LEASE BOUNDARY SHOWN HEREON TAKEN FROM TURKER COUNTY DEED BOOK 15 ON PAGE 241.
4. SURFACE OWNER AND ADJOINER INFORMATION TAKEN FROM THE ASSESSOR AND COUNTY CLERK RECORDS OF TUCKER COUNTY IN MAY, 1999.
5. WELL LAT./LONG. ESTABLISHED BY DGPS(SUBMETER MAPPING GRADE).

REFERENCES



I THE UNDERSIGNED, HEREBY CERTIFY THAT THIS PLAT IS CORRECT TO THE BEST OF MY KNOWLEDGE AND BELIEF AND SHOWS ALL THE INFORMATION REQUIRED BY LAW AND THE REGULATIONS ISSUED AND PRESCRIBED BY THE DEPARTMENT OF ENERGY.

P.S. 677 *Gregory A. Smith*



(+) DENOTES LOCATION OF WELL ON UNITED STATES TOPOGRAPHIC MAPS.

DATE MAY 24, 19 99
 OPERATORS WELL NO. ENERGEN NO. 1
 API WELL NO. 47 - 093 - 00077P
 STATE COUNTY PERMIT

MINIMUM DEGREE OF ACCURACY 1 / 200 FILE NO. 4209P1 (73-65)
 PROVEN SOURCE OF ELEVATION JUNCTION OF ROADS ELEVATION 3117' SCALE 1" = 4000'

STATE OF WEST VIRGINIA
 DIVISION OF ENVIRONMENTAL PROTECTION
 OFFICE OF OIL AND GAS

WELL TYPE : OIL GAS LIQUID INJECTION WASTE DISPOSAL IF "GAS" PRODUCTION STORAGE DEEP SHALLOW

LOCATION : ELEVATION 3447' WATERSHED TRIBUTARY OF YELLOW CREEK OF BLACKWATER RIVER
 DISTRICT DAVIS COUNTY TUCKER QUADRANGLE DAVIS 7.5'
 SURFACE OWNER WESTERN POCAHONTAS PROPERTIES, LP ACREAGE 3512
 ROYALTY OWNER ENERGEN RESOURCES MAQ, INC. LEASE ACRES 2622.06 OF 3512
 PROPOSED WORK : LEASE NO. ????
 DRILL CONVERT DRILL DEEPER REDRILL FRACTURE OR STIMULATE PLUG OFF OLD FORMATION
 PERFORATE NEW FORMATION PLUG AND ABANDON CLEAN OUT AND REPLUG OTHER
 PHYSICAL CHANGE IN WELL (SPECIFY) _____ TARGET FORMATION ORISKANY SANDSTONE
 ESTIMATED DEPTH 9,100'

WELL OPERATOR CABOT OIL AND GAS CORPORATION DESIGNATED AGENT JOHN ABSHIRE
 ADDRESS P.O. BOX 454 GLASGOW, WV 25086 ADDRESS P.O. BOX 454 GLASGOW, WV 25086

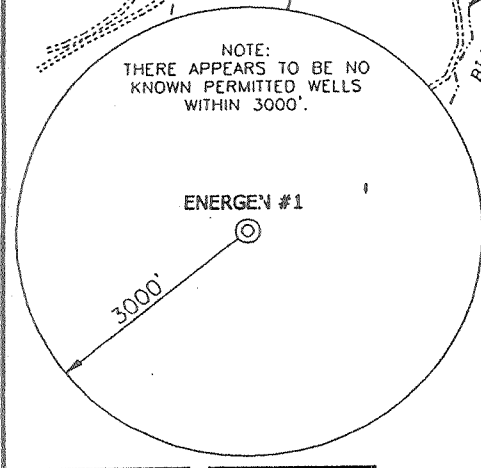
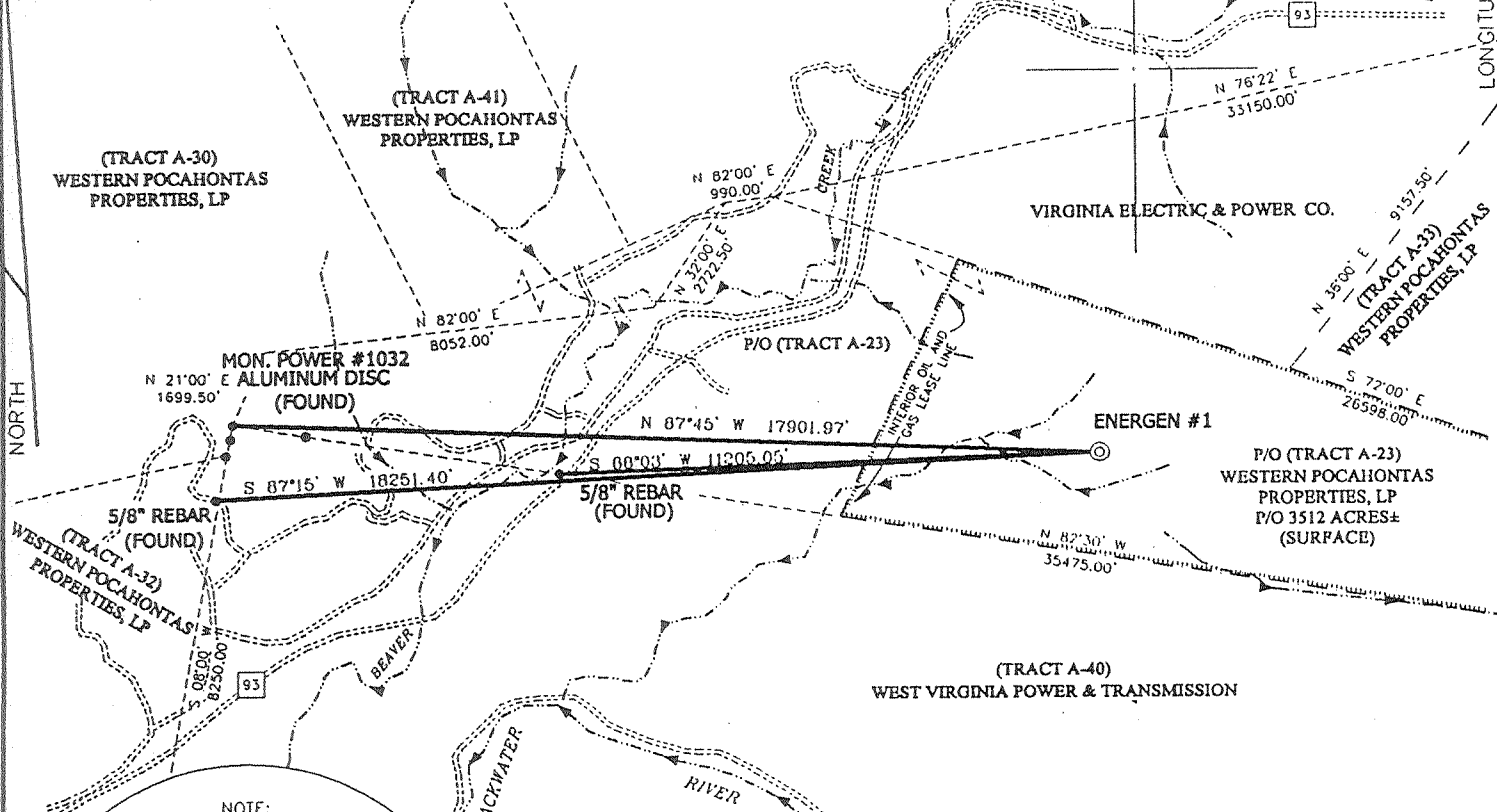
OCT 06 2000

TUC COUNTY NAME PERMIT D077P

ENERGEN RESOURCES MAQ, INC. LEASE

2622.06 ACRES ±

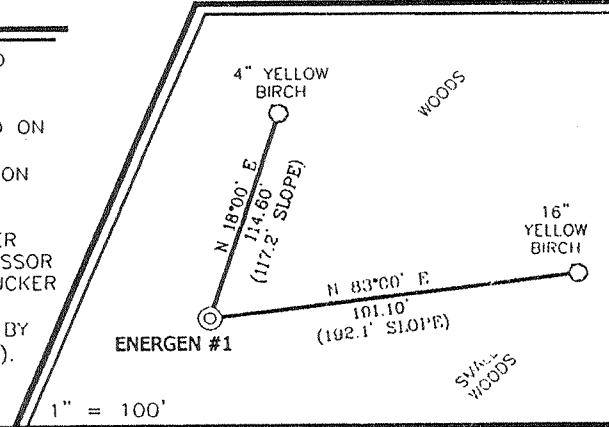
ENERGEN NO. 1



NOTES ON SURVEY

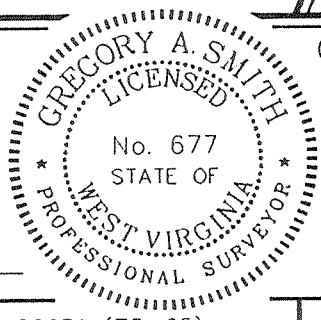
1. TIES TO CORNERS ARE BASED ON STATE PLANE GRID NORTH WV NORTH ZONE NAD '27.
2. TIES TO REFERENCES ARE BASED ON MAGNETIC NORTH 5/12/99.
3. LEASE BOUNDARY SHOWN HEREON TAKEN FROM TURKER COUNTY DEED BOOK 15 ON PAGE 241.
4. SURFACE OWNER AND ADJOINER INFORMATION TAKEN FROM THE ASSESSOR AND COUNTY CLERK RECORDS OF TUCKER COUNTY IN MAY, 1999.
5. WELL LAT./LONG. ESTABLISHED BY DGPS(SUBMETER MAPPING GRADE).

REFERENCES



I THE UNDERSIGNED, HEREBY CERTIFY THAT THIS PLAT IS CORRECT TO THE BEST OF MY KNOWLEDGE AND BELIEF AND SHOWS ALL THE INFORMATION REQUIRED BY LAW AND THE REGULATIONS ISSUED AND PRESCRIBED BY THE DEPARTMENT OF ENERGY.

P.S. 677 Gregory A. Smith



(+) DENOTES LOCATION OF WELL ON UNITED STATES TOPOGRAPHIC MAPS.
 DATE MAY 24, 19 99
 OPERATORS WELL NO. ENERGEN NO. 1
 API WELL NO. 47-093-00077
 STATE COUNTY PERMIT

MINIMUM DEGREE OF ACCURACY 1 / 200 FILE NO. 4209P1 (73-65)
 PROVEN SOURCE OF ELEVATION JUNCTION OF ROADS ELEVATION 3117' SCALE 1" = 4000'

STATE OF WEST VIRGINIA
 DIVISION OF ENVIRONMENTAL PROTECTION
 OFFICE OF OIL AND GAS

WELL TYPE : OIL GAS LIQUID INJECTION WASTE DISPOSAL IF "GAS" PRODUCTION STORAGE DEEP SHALLOW

LOCATION :
 ELEVATION 3447' WATERSHED TRIBUTARY OF YELLO'V CREEK OF BLACKWATER RIVER
 DISTRICT DAVIS COUNTY TUCKER QUADRANGLE DAVIS 7.5'
 SURFACE OWNER WESTERN POCAHONTAS PROPERTIES, LP ACREAGE 3512
 ROYALTY OWNER ENERGEN RESOURCES MAQ, INC. LEASE AC² AGE 2622.06 OF 3512
 PROPOSED WORK :
 DRILL CONVERT DRILL DEEPER REDRILL FRACTURE OR STIMULATE PLUG OFF OLD FORMATION PERFORATE NEW FORMATION PLUG AND ABANDON CLEAN OUT AND REPLUG OTHER
 PHYSICAL CHANGE IN WELL (SPECIFY) _____ TARGET FORMATION ORISKANY SANDSTONE
 ESTIMATED DEPTH 9,100'

WELL OPERATOR CABOT OIL AND GAS CORPORATION DESIGNATED AGENT JOHN ABSHIRE
 ADDRESS P.O. BOX 454 GLASGOW, WV 25086 ADDRESS P.O. BOX 454 GLASGOW, WV 25086

DEEP WELL

HO O

AUG 16 1999

COUNTY NAME TUC PERMIT 0077

State of West Virginia
Division of Environmental Protection
Section of Oil and Gas
Well Operator's Report of Well Work

Rev:

Farm name: Western Pocahontas Properties Operator Well No.: Energen #1

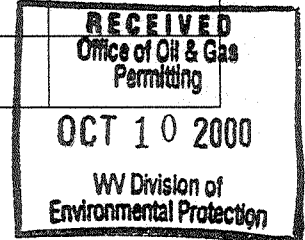
LOCATION: Elevation: 3447' Quadrangle: Davis 7.5'
District: Davis County: Tucker
Latitude: 3280 feet South of 39 DEG. 9 MIN. 27.4 SEC.
Longitude: 3830 feet West of 79 DEG. 23 MIN. 18.7 SEC.

Company: Cabot Oil & Gas Corporation
400 Fairway Drive: Suite 400
Coraopolis, PA 15108-4308

Casing & Tubing Size	Used In Drilling	Left in Well	Cement Fill up Cu. Ft.
20"	31'	31'	17 sks Class A
9-5/8"	2221.8'	2221.8'	675 sks Class A

Agent: John Abshire
Inspector: Craig Duckworth
Permit Issued: 08/10/99
Well Work Commenced: 9/8/00
Well Work Completed: 9/29/00
Verbal Plugging Permission granted on: 9/29/00
Rotary X Cable
Total Depth (feet) 9856'
Fresh Water Depths (ft) 44', 1725'
Salt Water Depths (ft) N/A

Is coal being mined in area (Y / N)? N
Coal Depths (ft)



OPEN FLOW DATA

Producing formation Pay zone depth (ft)
Gas: Initial open flow MCF/d Oil: Initial open flow Bbl/d
Final open flow MCF/d Final open flow Bbl/d
Time of open flow between initial and final tests Hours
Static rock pressure psig (surface pressure after Hours

Second producing formation Pay zone depth (ft)
Gas: Initial open flow MCF/d Oil: Initial open flow Bbl/d
Final open flow MCF/d Final open flow Bbl/d
Time of open flow between initial and final tests Hours
Static rock pressure psig (surface pressure after Hours

NOTE: ON BACK OF THIS FORM PUT THE FOLLOWING: 1). DETAILS OF PERFORATED INTERVALS, FRACTURING OR STIMULATING, PHYSICAL CHANGE, ETC. 2). THE WELL LOG WHICH IS A SYSTEMATIC DETAILED GEOLOGICAL RECORD OF ALL FORMATIONS, INCLUDING COAL ENCOUNTERED BY THE WELLBORE.

For: CABOT OIL & GAS CORPORATION OCT 13 2000

By: Ray Rudnick, Jr. Operations Manager
Date: 10-4-00

TUC 0077

FORMATION	TOP	BOTTOM	REMARKS
Shale	0	180'	
Siltstone	180'	330'	
Shale	330'	2170'	
Sand/Shale	2170'	3418'	
Shale	3418'	3930'	
Siltstone	3930'	4350'	
Shale	4350'	4420'	
Siltstone	4420'	4505'	
Shale	4505'	5148'	
Sandstone	5148'	5162'	
Shale	5162'	5395'	
Sandstone	5395'	5426'	
Shale	5426'	8908'	
Tully	8908'	8930'	
Shale	8930'	9310'	
Pardee	9310'	9345'	
Shale	9345'	9421'	
Onondaga	9421'	9555'	
Oriskany	9555'	9684'	
Limestone	9684'	9856' - TD	

