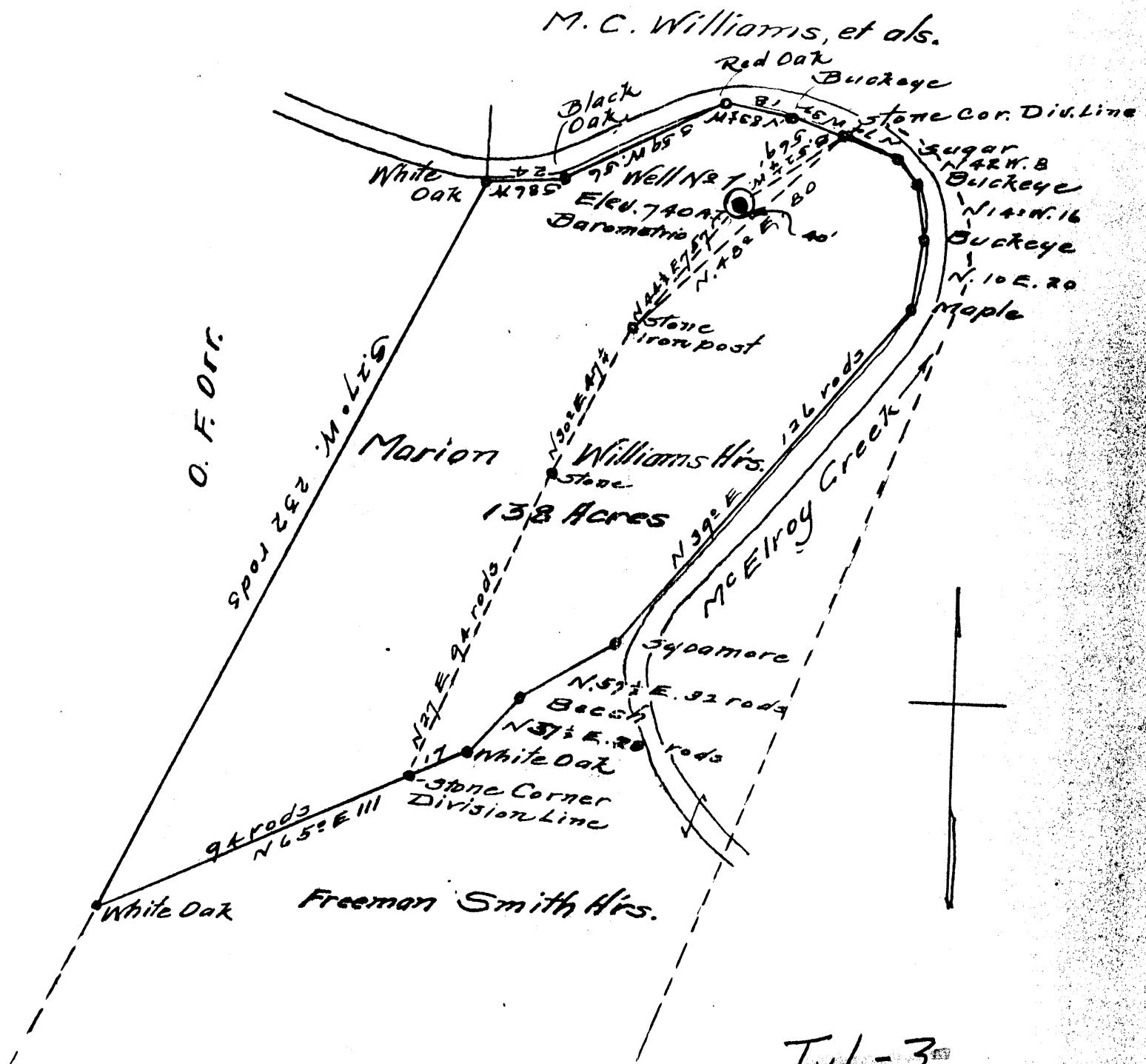


Plat of the Proposed Location of Well No. 1 of the Big Bend Oil Co. of Middlebourne, W. Va., on the Marion Williams Heirs Farm, Consisting of 138 Acres Located in McElroy District, Tyler County.



Tyl-3
No Well Record

Engineer's Certificate.

I, the undersigned, hereby certify that this map is correct and shows all the information to the best of my knowledge and belief required by the Oil and Gas section of the mining Laws of West Virginia.

P. P. Beckley, Engineer

Acknowledged before me, a notary public in and for Tyler County, this 25th. day of July, 1929.

M. C. Burghauer
Notary Public

LATITUDE

39 25

80 45

0 → 0 GIS
7.5' loc

LONGITUDE

LONGITUDE

7.5 OGIS topo location

7.5' loc 0.825
1.00W

15' loc 0.825
(calc.) 1.00W

Company _____

Farm _____

LOCATION MAP

Quad Shirley West Union EC

County _____

District McElroy

WELL LOCATION MAP

File No. Tyler 3

Storage well, D&P database
Equitrons (6228)

HARLOW

MARTIN WILLIAMS NO. 1 WELL.

Gal. No. 346A (304)

McElroy District, Tyler County, W. Va.
 Near Underwood, Big Bend Oil Co., Shirley, W. Va.
 Elevation, 748'.
 10" casing, 145'; 8", 985'; 6-5/8", 1637'.
 On McElroy Creek.
 Shown on 9-D, West Union Quadrangle.
 Oil production light but steady declines.

TYL-3

	Top.	Bottom.
✓ Pittsburgh Coal	400	
✓ Big Dunkard Sand	None	
✓ Big Lime	1617	
✓ Big Injun Sand (gas, 1719'; oil, 1736'; gas, 1788'; oil, 1790'; total, 1798')	1682	
Total depth		1811

WILLIAMS NO. 1 WELD.

JG's. Tyl. Notes.
Survey No. 462.

McElroy District, Tyler County, W. Va.

By H. Hunderwood (Shirley, W. Va.)

Completed Feb. 1951.

Dry hole.

Elevation, 75' B.

In Little Pittsburgh.

Abandoned, but not plugged.

7