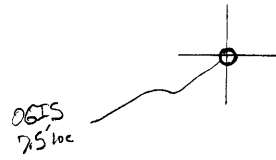


LATITUDE 39° 35'

80° 52' 30"

LONGITUDE



T'5 OGIS topo location

7.5' loc	<u>2.41 S</u>	15' loc	<u>2.41 S</u>
	<u>0.56 W</u>	(calc.)	<u>2.78 W</u>

Company \_\_\_\_\_

Farm \_\_\_\_\_

Quad Aden City 7.5' (N. Hartsville)

County Tyler SC

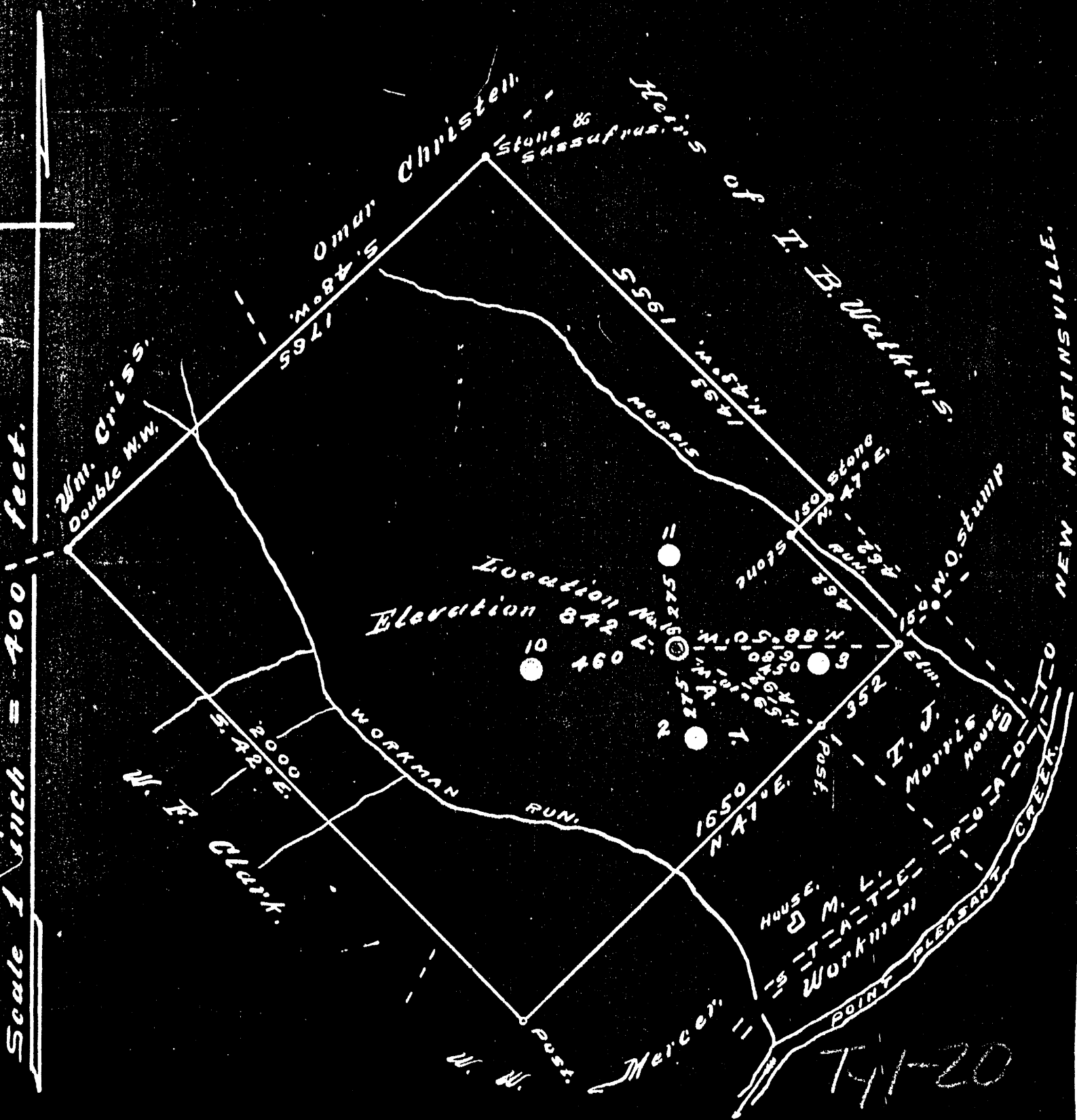
District Ellsworth

WELL LOCATION MAP

File No. 095-20

gas injection well

Plan of proposed location of Well No. 16, on the land of the Heirs of R. A. Workman, containing 79.42 acres, in Ellsworth District, Tyler County, West Virginia. By the Southern Oil Company, 1005 Farmers Bank Building, Pittsburgh, Pennsylvania.



I, the undersigned hereby certify this map is correct, and shows all the information to the best of my knowledge, as required by the Oil & Gas section of the Mining Laws, of West Virginia. David Weed, Engineer.

Acknowledged before me a Notary Public, this 30th. day of July, 1934.

D. R. Rymal, Notary Public.

My commission expires 11th. day of September, 1938.

WEST VIRGINIA DEPARTMENT OF MINES

OIL AND GAS DIVISION

PRELIMINARY DATA SHEET NO. 1

File No. Ty1-20 Well No. 16.

Pittsburg Oil & Gas Company Company of 1005 farmers Bank Building,

Pittsburgh, Pennsylvania, on the R.A. Workman. Farm

containing 80.00 acres. Location \_\_\_\_\_

Ellsworth District, in Tyler County, West Virginia

The surface of the above tract is owned in fee by R.A. Workman Heirs (see attached list)

of \_\_\_\_\_ address, and the mineral rights are owned by

Pittsburg Oil & Gas Company of Pittsburgh, Pennsylvania.

The oil and gas privileges are held under lease by the above named company, and this well is drilled under permit

No. Ty1-20 issued by the West Virginia Department of Mines, Oil and Gas Division

August 18th, 1934. \_\_\_\_\_ 193\_\_\_\_\_

Elevation of surface at top of well, Not given by drilling contractor. <sup>915'</sup> 842' Spirit Barometric.

The number of feet of the different sized casings used in the well.

10 feet. \_\_\_\_\_ feet \_\_\_\_\_ size. Wood conductor.

147 feet 10" size, csg. 860' feet 8 1/4" sized csg.

1745' feet 6 1/4" size, csg. 1808' feet 2" tubing sized csg.

\_\_\_\_\_ feet \_\_\_\_\_ size, csg. \_\_\_\_\_ feet \_\_\_\_\_ sized csg.

\_\_\_\_\_ packer of \_\_\_\_\_ size, set at \_\_\_\_\_

\_\_\_\_\_ packer of \_\_\_\_\_ size, set at \_\_\_\_\_

\_\_\_\_\_, in casing perforated at \_\_\_\_\_ feet to \_\_\_\_\_ feet.

\_\_\_\_\_, in casing perforated at \_\_\_\_\_ feet to \_\_\_\_\_ feet.

Coal was encountered at \_\_\_\_\_ feet, thickness \_\_\_\_\_ inches, and at \_\_\_\_\_

feet; thickness \_\_\_\_\_ inches; and at \_\_\_\_\_ feet; thickness \_\_\_\_\_ inches.

Liners were used as follows: (Give details) \_\_\_\_\_

April 30th, 1935. \_\_\_\_\_ Date.

Approved PITTSBURG OIL & GAS COMPANY, Owner.

By J. W. Haley General Superintendent.

MAY 5 1935

PITTSBURG OIL & GAS COMPANY Company  
 1005 Farmers Bank Building,  
 Pittsburgh, Pennsylvania. Address

COMPLETION DATA SHEET  
 No. 2  
 FORMATION RECORD

WELL NO. 16. *Ty-20* FARM R.A. Workman.

Name	Color	Character	Oil, Gas or Water	Top	Bottom	Thickness	Total Depth	Remarks
Hurry Up	-	-	-	470'	550'	80'		
Slate Shells		Hard		550'	783'	233'		
Red		-		783'	825'	42'		
White slate		Hard		825'	895'	70'		
Little Dunk.		-		895'	905'	10'		
Lime		Hard		905'	932'	27'		
Red.		-		932'	967'	35'		
Big Dunkard		-		967'	983'	16'		
Slate-dark		-		983'	1015'	32'		
Lime		-		1015'	1060'	45'		
Gas Sand		-		1060'	1085'	25'		
Slate		-		1085'	1100'	15'		
1st Salt		-		1100'	1185'	85'		
Slate		-		1185'	1214'	59'		
Black slate		-		1214'	1325'	81'		
2nd Salt		-		1325'	1460'	135'		
Black slate		-		1460'	1490'	30'		
3rd Salt		-		1490'	1658'	168'		
Black slate		-		1658'	1702'	44'		
Little Lime		-		1702'	1736'	34'		
Pencil Cave		-		1736'	1741'	5'		
Big Lime		-		1741'	1808'	67'		
Keener Sand		-		1808'	1813'	5'		
Lime & Sand		-		1813'	1815'	2'		
Keener Sand		-		1813'	1825'10"	12'10"		
Lime		-		1825'10"	1840'10"	15'		
Injun Sand		-		1840'10"	1879'	38'2"		

This well was drilled solely for the purpose of applying gas and air pressure on the sand.

shot  
 Well was not shot at ..... feet; well was shot at ..... feet.

Salt  
 Fresh water at ..... feet; fresh water at ..... feet.

producing hole. Not a producer. gas injection  
 Well was dry

PITTSBURG OIL & GAS COMPANY.

Date ..... Approved *A. W. Haley* Owner General Superintendent.

NOTE: All bottom formations must be noted as indicated above and all key-rocks and oil and gas sands must be recorded under their proper geological names in the district as well as any local names commonly used in the district for such strata.

MAY 3 1935