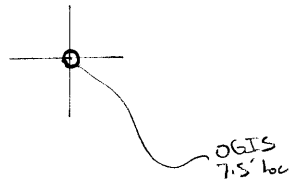


LATITUDE

39° 35'

80° 47' 30"

LONGITUDE



7.5 OGIS topo location

7.5' loc	<u>1.93 S</u>	15' loc	<u>1.93 S</u>
	<u>1.07 W</u>	(calc.)	<u>3.29 W</u>

Company \_\_\_\_\_

Farm \_\_\_\_\_

Quad Porters Falls 7.5' (N.M. 1st v)

County Tyler SE

District Ellsworth

WELL LOCATION MAP

File No. 095-55

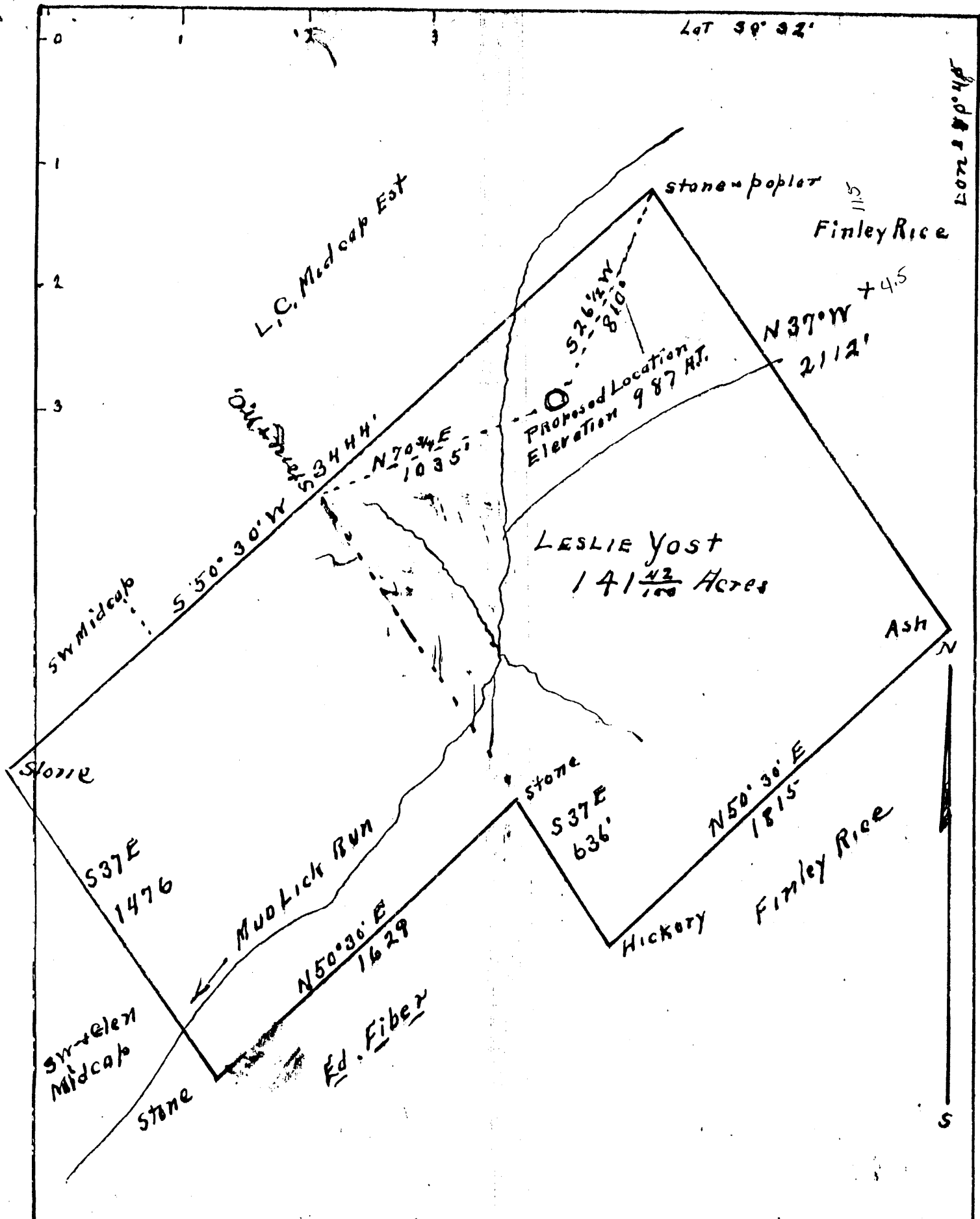
CLOP

1-0

(6)

Lat 39° 32'

Long 80° 48'



Company Thos. E. Newton O.G. Midcap  
New Martinsville, W. Va.  
 Farm Leslie Yost  
141 42/100 Acres Lease # 022  
 Well One  
 Quadrangle  
 County TYLER  
 District ELLSWORTH  
 Engineer J. M. Parsons  
 Engineers Reg. No 203

Date Sept 15-1936  
 Scale 1 inch = 500'

STATE OF WEST VIRGINIA  
 DEPARTMENT OF MINES  
 OIL AND GAS DIVISION

WELL LOCATION MAP  
 TYL - 55

+ Denotes location of well on United States Topographic Maps scale 1 to 62,500 lat. Rude and longitude lines being represented by border lines as shown.  
 - Denotes one inch spaces on border line of original tracing -

741-55  
 JAS E Newton and O. T. Midcamp Company

COMPLETION DATA SHEET

2 New Martinsville W Va Address

No. 2

Well No. 1 Leslie Yest Farm Tyler Co

FORMATION RECORD

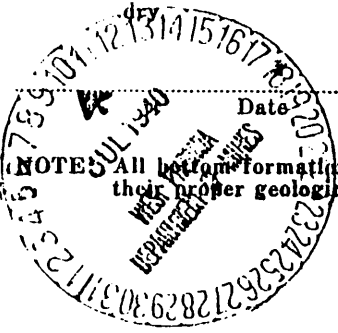
Name	Color	Character	Oil, Gas or Water	Top	Bottom	Thickness	Total Depth	Remarks
Clay	Red			0	35			
Lime	White			35	45			
Shale	dark			45	65			
Shale	light			65	90			
Lime Shells				90	150			
Red reek	red			150	160			
lime				160	170			
shale				170	210			
Lime				210	240			
Red Reek				240	260			
shale				260	290			
Lime shells				290	325			
sand				325	355			
slate and shells				355	560			
Red reek				560	575			
slate and shells				575	640			
Red reek				640	695			
Lime				695	710			
sand				710	740			
slate				740	835			
#lime				835	860			
slate				860	900			
sand				900	950			
red reek				950	960			
slate				960	1000			
lime & shells				1000	1065			
red reek				1065	1090			
slate				1090	1095			
red reek				1150	1170			
white slate				1170	1195			
slate dark				1195	1210			
Little Dunk sand				1210	1240			
Red reek				1240	1260			
lime hard				1260	1265			
Big dunk				1265	1280			
lime				1280	1298			
sand				1308	1310			
lime				1310	1320			
sand				1320	1350			
lime shells				1350	1400			
slate white				1400	1435			
lime				1435	1450			
salt sand				1450	1470			
slate & shells				1470	1545			
sand				1545	1560			
lime shells				1560	1600			

lime shells shot  
 Well was not shot at ..... feet; well was shot at ..... feet.

Salt ..... salt  
 Fresh water at ..... feet; fresh water at ..... feet.

producing  
 Well was ..... hole.

Approved ..... Owner



Tyler-55.

.....Company  
.....Address  
Well No.....

COMPLETION DATA SHEET  
No. 2  
FORMATION RECORD

Name	Color	Character	Oil, Gas or Water	Top	Bottom	Thickness	Total Depth	Remarks
Sand				1800	1620			
slate				1620	1650			
sand				1650	1680			
slate				1680	1700			
sand				1700	1720			
shells				1720	1800			
sand				1800	1810			
shells				1810	1840			
sand Maxter:				1840	1860			
shells				1860	1900			
slate & shells				1900	1950			
sandy lime				1950	1980			
little Lime				1980	1985			
pencil cave				1985	2010			
B #lime				2010	2058			
Keener sand		shaing of gass	2058	2058	2080			
Big ong		Water ta	2080	2168	2174			

Well dry

shot  
Well was not shot at.....feet; well was shot at.....feet.  
Salt  
Fresh water at.....feet; salt  
fresh water at.....feet.  
producing  
Well was hole.  
dry

Approved.....  
Owner.....

NOTE: At bottom formations must be noted as indicated above and all key-rocks and oil and gas sands must be recorded under their proper geological names in the district as well as any local names commonly used in the district for such strata.

