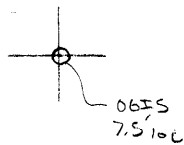


LATITUDE

39° 35'

LONGITUDE 80° 57' 30"



7'5 OGIS topo location

7.5' loc	<u>0.80S</u>	15' loc	<u>0.80S</u>
	<u>1.50W</u>	(calc.)	<u>4.21W</u>

Company _____

Farm _____

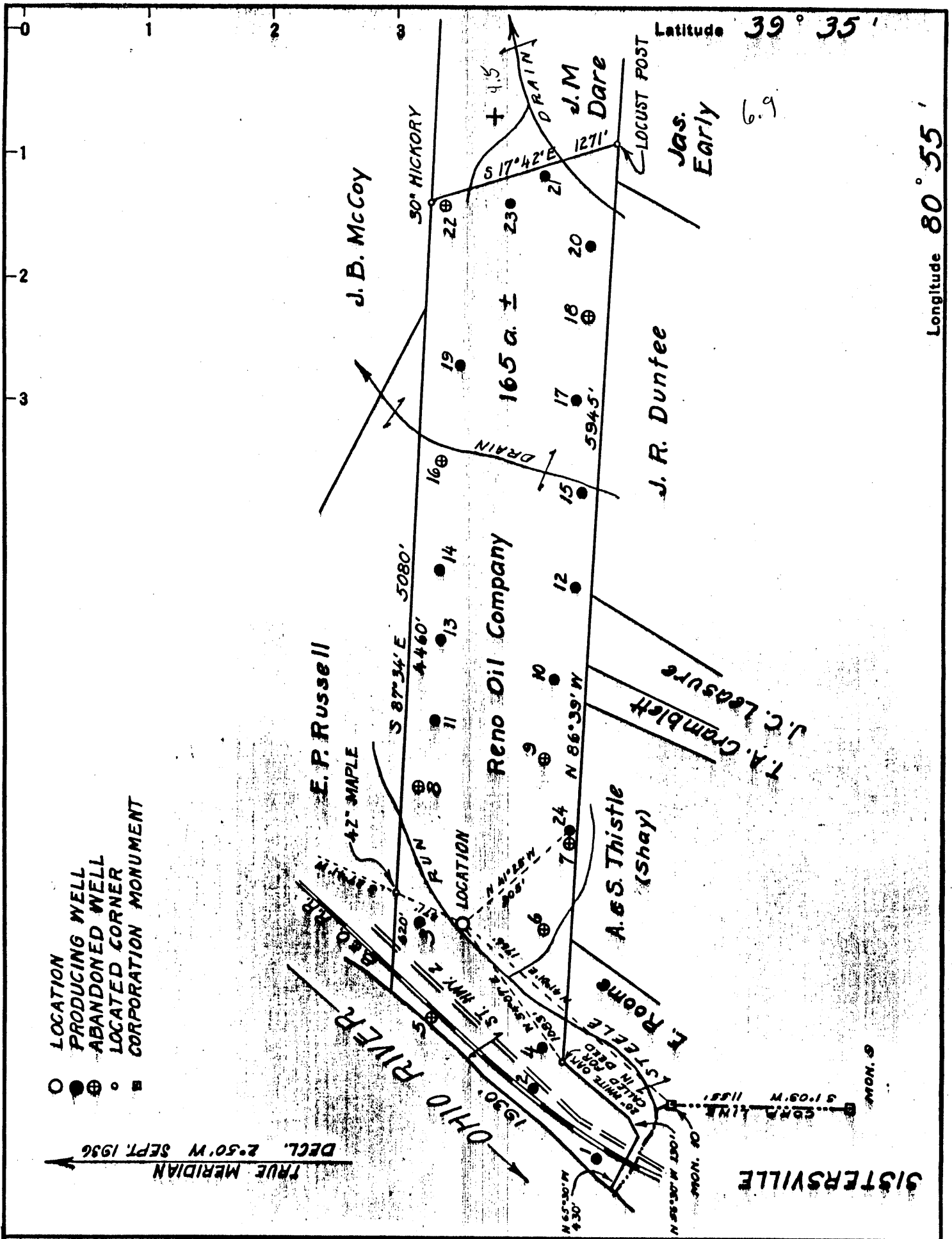
Quad Paden City 7.5' (N.M. 12501)

County Tyler SW

District Lincoln

WELL LOCATION MAP

File No. 095-58



Company Reno Oil Company
 Address Sistersville, W. Va.
 Farm Reno Oil Company
 Tract Acres 165.3 Lease No.
 Well (Farm) No. 25 Serial No.
 Elevation (Spirit Level) 787 A.T.
 Quadrangle New Martinsville
 County Tyler District Lincoln
 Engineer H.R. Pierce
 Engineer's Registration No.
 File No. Drawing No.
 Date SEPT 26 1936 Scale 1 INCH = 800 FT.

STATE OF WEST VIRGINIA
 DEPARTMENT OF MINES
 OIL AND GAS DIVISION
 CHARLESTON

WELL LOCATION MAP
 FILE NO. TYL 58

+ Denotes location of well on United States Topographic Maps, scale 1 to 62,500, latitude and longitude lines being represented by border lines as shown.
 - Denotes one inch spaces on border line of original tracing.

WEST VIRGINIA DEPARTMENT OF MINES

OIL AND GAS DIVISION

WELL RECORD

Permit No. Tyl-58

New Martinsville Quad.

Company - Reno Oil Company
 Address - Sistersville, W. Va.
 Farm - Reno Oil Company
 Location - Acres-
 Well No. - Five. (Farm well no 25). Elev.-
 District - Lincoln. County- Tyler
 Surface & - Reno Oil Co.
 Mineral - Sistersville, W. Va.
 Drilling - Commenced-
 Completed-
 Date Shot - Depth----
 Open Flow -
 Rock Pross.-
 Oil -
 Fresh Water-
 Salt Water -

CASING & TUBING

366'9"	10"
743'2"	8 $\frac{1}{4}$ "
1457'4"	6-5/8"

Formation Color ^{Hor} *Top* *Bottom* *Result* *Formation Color* ^{Hor} *Top* *Bottom* *Result*

Red Cave		550	700						
Black Slate		700	715						
Pink Rock		715	730						
Blue Slate		730	835						
1st Salt Sand		835	875						
Blue Slate		875	915						
Sand		915	925						
Black Slate		925	940						
White Slate		940	970						
2nd Salt Sand		970	1000						
Broken Sand		1000	1040						
Sand		1040	1110						
Black Slate		1110	1130						
3rd Salt Sand		1130	1150	Gas at 1130					
Blue Slate		1150	1250						
Black Slate		1250	1300						
Sand		1300	1335						
Black Slate		1335	1370						
Maxon Sand		1370	1385						
Black Slate		1385	1430						
Big Lime	Black	1430	1470						
Big Lime	White	1470	1494						
Keencer Sand		1494	1514 $\frac{1}{2}$	Small show of oil 1509 to 1512					
Blue Slate		1514 $\frac{1}{2}$	1526						
Sand		1526	1529	Gas 1526' to 1529' 6 M.C.F. day					
Blue Slate		1529	1533						
Big Injun Sand		1533	1551 $\frac{1}{2}$	Well saturated pay Sand changing to pebble cluster					
Big Injun Sand		1533	1634 $\frac{1}{2}$	bonded together with coarse grained sand & silt.					
Big Injun Sand		1551 $\frac{1}{2}$	1634 $\frac{1}{2}$	1551 $\frac{1}{2}$ beginning of vacuum pay thin hard break. Sand became more firm. 1582 bottom of pay.					