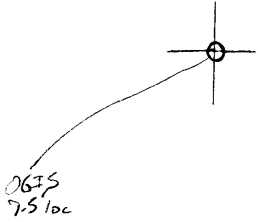


LATITUDE

39° 30'

81° 2' 30"



LONGITUDE

7.5 OGIS topo location

7.5' loc	<u>0.93 S</u>	15' loc	<u>0.93 S</u>
	<u>0.14 W (calc.)</u>		<u>2.36 W</u>

Company \_\_\_\_\_

Farm \_\_\_\_\_

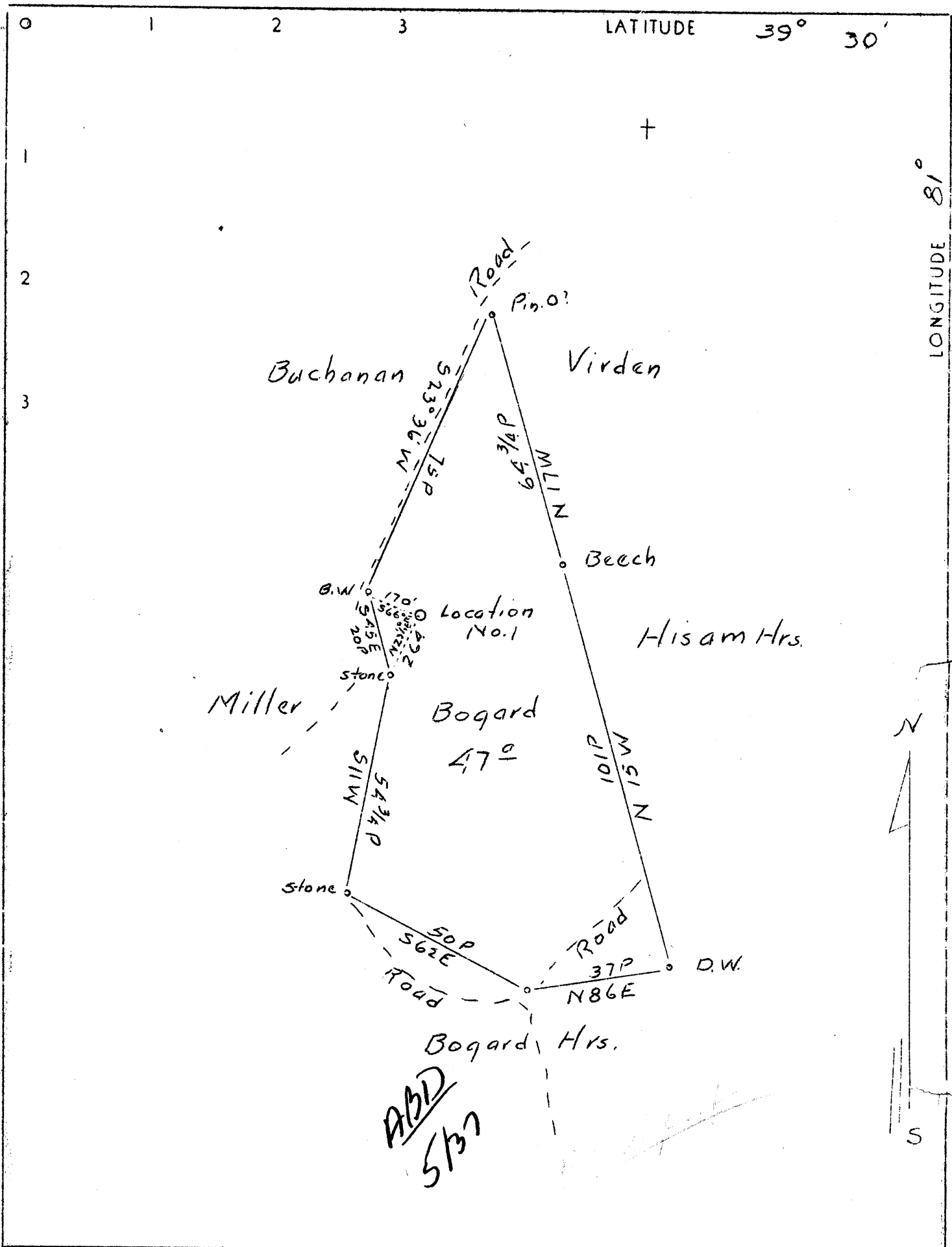
Quad Bens Run 7.5' (St. Marys)

County Tyler NE

District Union

WELL LOCATION MAP

File No. 095-61



Company	J. T. Fonner
Address	Middlebourne
Farm	Bogard heirs
Tract	1
Acres	50
Lease No.	
Well (Farm) No.	1
Serial No.	
Elevation (Spirit Level)	730'
Quadrangle	St. Marys
County	Tyler
District	Union
Engineer	J. S. Haught
Engineer's Registration No. (Co. Surv)	
File No.	1
Drawing No.	
Date	12-1-36
Scale	1" 30 rd.

STATE OF WEST VIRGINIA  
 Department of Mines  
 OIL AND GAS DIVISION  
 CHARLESTON

WELL LOCATION MAP

File No. TYL-61

+ Denotes location of well on U. S. Topographic Maps, scale 1 to 62,500 latitude and longitude lines being represented by border lines as shown.

- Denotes one inch spaces on border line of original tracing.

WEST VIRGINIA DEPARTMENT OF MINES  
OIL AND GAS DIVISION

WELL RECORD

Permit No. Ty1-61

Oil or Gas Well.....  
(Kind)

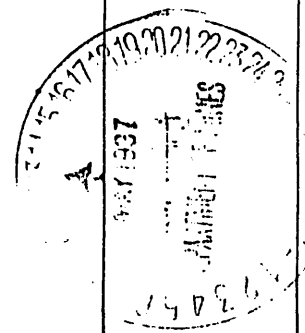
Company Oak Grove Oil Co  
Address Middlebourne  
Farm M. B. Bogard Heirs Acres 50  
Location (waters) West Br Big Buffalo Creek  
Well No. #1 Elev. 731  
District Union County Tyler  
The surface of tract is owned in fee by M. B. Bogard Heirs  
Address Friendly, W. Va.  
Mineral rights are owned by Bogard Heirs  
Address same  
Drilling commenced March 16, 1937  
Drilling completed April 13, 1937  
Date shot Apr 15, 1936 Depth of shot 130 ft  
Open Flow 10ths Water in Inch  
10ths Merc. in Inch  
Volume Small Cu. Ft.  
Rock Pressure Not taken lbs. hrs.  
Oil 1 bbls., 1st 24 hrs.  
Fresh water None feet  
Salt water Small amount feet  
2 or 3 bbls in water and (Big) in

Casing and Tubing	Used in Drilling	Left in Well	Packers
Size			
16			Kind of Packer <u>B.H.</u>
13			<u>698</u>
10	<u>77</u>		Size of
8 1/4	<u>815</u>		
6 5/8	<u>1474</u>		Depth set
5 3/16			
3			Perf. top
2			Perf. bottom
Liners Used			Perf. top
			Perf. bottom

Formations - Came in after shot.

CASING CEMENTED..... SIZE..... No. FT..... Date  
COAL WAS ENCOUNTERED AT None FEET..... INCHES  
FEET..... INCHES FEET..... INCHES  
FEET..... INCHES FEET..... INCHES

Formation	Color	Hard or Soft	Top	Bottom	Oil Gas or Water	Depth Found	Remarks
Surface	soil	Soft	00	13			
Sandy Lime	Grey	Hard	13	35			
Fresh Water						35-40	Filled hole
Red Rock	Red	Hard	40	110			
Clay	Blue	Soft	110	150			
Red Lime	Red	Hard	150	250			
Clay	Blue	Soft (m)	250	275			
Sand	Greenish-blue	Hard	275	305			
Sandy Lime	Grey	Hard	305	475			
Sand	Reddish	Soft	475	555			
Fine Shells	Grey to Red	Soft	555	682			
Lime	Grey	Hard	682	698			
Shale & Sand	Blue to grey	Hard to med	698	754			
Shale	Blue	Med	754	787			
Dunshard	White	Soft	787	805	oil	787-805	Black oil
Clay	Blue	Soft	805	840			
Sand	White	Hard	840	890			
Clay & Shells	Blue	Med	890	926			
Sand	White	Hard	926	1025			
Shale (sandy)	Beige	Med	1025	1055			
Sand	White	Hard	1055	1097			
Shale	Beige	Med	1097	1125			
Sand	White	Hard	1125	1176			



1165-1176  
WV Dept of Mines

grayish  
Brackish