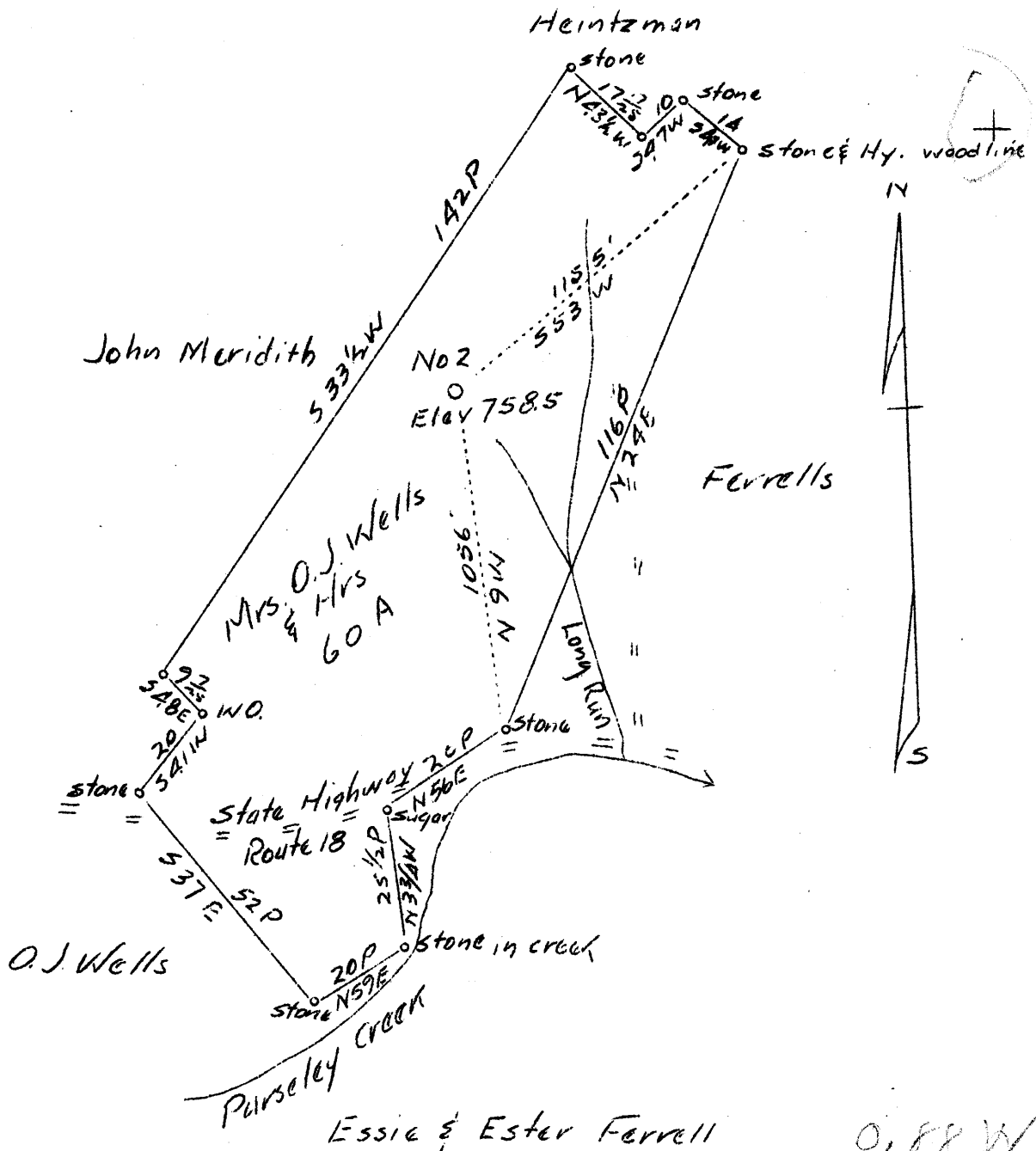


LATITUDE 39° 35'

LONGITUDE 80° 55'



0.88 W  
7.63 R

Company	Anilline Oil and Gas Co
Address	Parkersburg, W. Va.
Farm	Mrs. O. J. Wells & Heirs
Tract	Acres 60 Lease No.
Well(Farm) No.	2 Serial No.
Elevation (Spirit Level)	758.5
Quadrangle	New Martinsville
County	Tyler District Lincoln
Engineer	J. V. Dunbar
Engineer's Registration No.	65
File No.	C-23-L Drawing No.
Date	3-30-37 Scale 1" - 30 P.

STATE OF WEST VIRGINIA  
Department of Mines  
OIL AND GAS DIVISION  
Charleston

WELL LOCATION MAP  
File No. TYL-70

+ Denotes location of well on U. S. Topographic Maps, scale 1 to 62,500 latitude and longitude lines being represented by border lines as shown.

— Denotes one inch spaces on border line of original tracing.

WEST VIRGINIA DEPARTMENT OF MINES

OIL & GAS DIVISION

WELL RECORD

Permit No. Tyl-70

- Well

Quad.

CASING & TUBING

Company Ameline Oil Co.  
 Address Parkersburg, W. Va. 8-1/4" 250  
 Farm O. J. Wells 6-5/8 950  
 Location Dry Run 5-3/16 1450 1450  
 Well No. 2  
 District Lincoln  
 County Tyler  
 Sur. & Min. O. J. Wells, Middlebourne W.Va.  
 Drilling Commenced Aug. 14, 1937  
 Drilling completed Oct. 15, 1937  
 Open Flow -  
 Rock Pressure -  
 Salt Water 130'

Formation Color Hard TOP Base Result Formation Color Hard TOP Base Result

Formation	Color	Hard	TOP	Base	Result	Formation	Color	Hard	TOP	Base	Result
Sand	White		50	70							
Shale											
Pittsburgh Coal				490							
Dunkard	White		490								
Sand			920	950							
Salt Sand			1020	1420							
Stray Maxon			1430	1480							
Black Shale			1480	1570							
Lime Shell			1570	1580							
Maxon Sand			1580	1585							
Big Lime			1585	1695							
Engine Sand			1695	1737							
<b>INJUN</b>											
						Gas				1697'	
						Water				1937'	

1337  
 1585  
 1737

1585  
 1737  
 1337