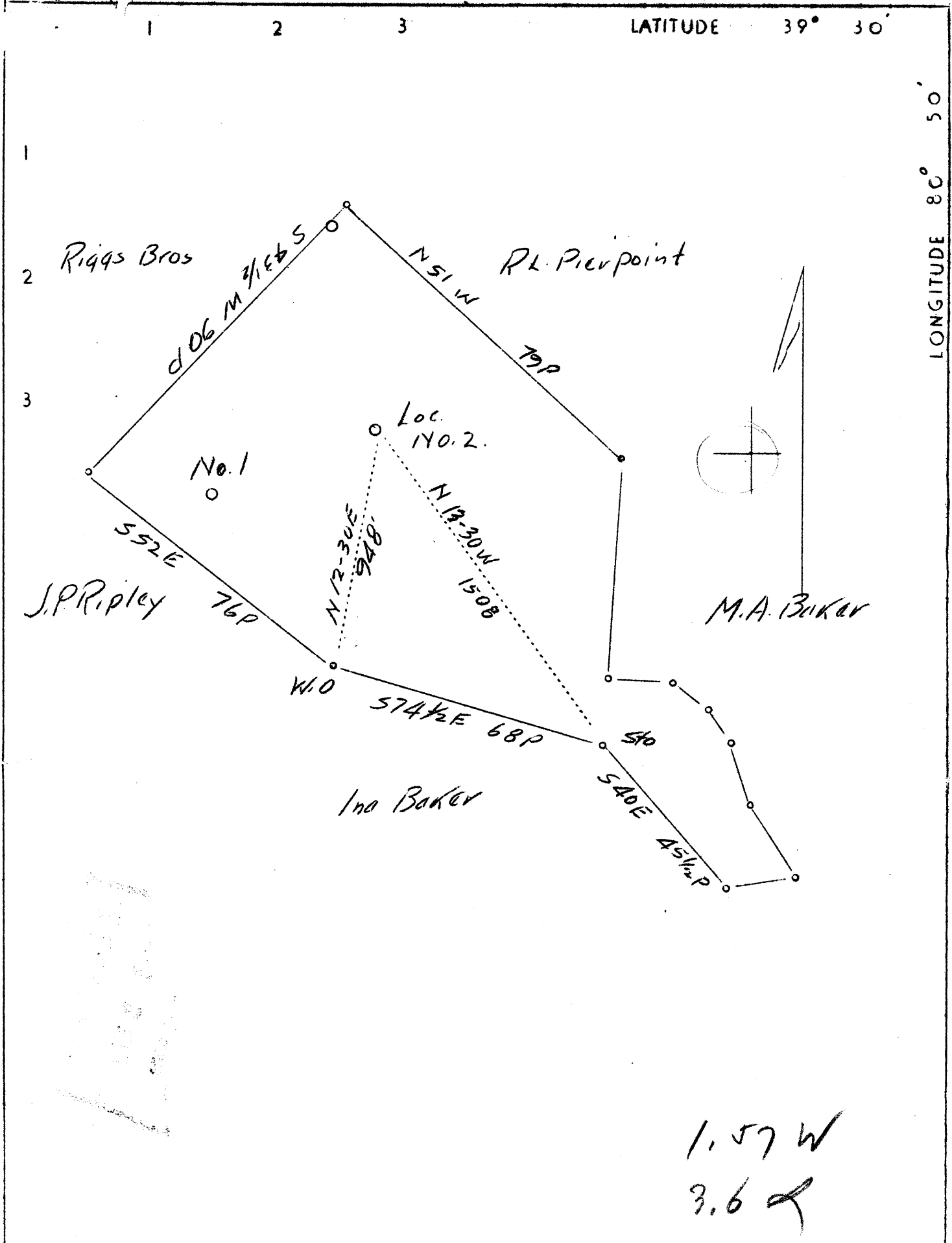


M. 73



1.57 W
3.6 R

Company	American Oil Development Co.
Address	Sistersville, W.Va.
Farm	Leroy Pierpoint
Tract	Acres 73 Lease No.
Well (Farm) No.	2 Serial No.
Elevation (Spirit Level)	1187.2
Quadrangle	West Union (NC)
County	Tyler District Centerville
Engineer	J.S. Haught
Engineer's Registration No.	County Surveyor Tyler Co.
File No.	Drawing No.
Date	July 24, 1937 Scale 1"-30 Rods

STATE OF WEST VIRGINIA
 Department of Mines
 OIL AND GAS DIVISION
 CHARLESTON

WELL LOCATION MAP

File No. TYL-79

+ Denotes location of well on United States Topographic Maps, scale 1 to 62,500, latitude and longitude lines being represented by border lines as shown.

— Denotes one inch spaces on border line of original tracing.

O.F.No. ..125..

.. *Seagr. Virginia*.....No.....2..... Well

By *St. Louis*...Oil.....Company.

Centerville... District, ..*D. G.*.....County.

On..... acres. On.....(stream).

Completed..... Total depth, *2202* feet.

.. *Big Spring*.....Sand.bbls.oil.

.....M. cu. ft. gas. R. P.Lbs.

Drilling Permit No. *79* Aband. Permit No.....-A.

Centerville District, Tyler County, W. Va.
South Penn Oil Co.

	Top.	Bottom.
Pittsburgh Coal	815	
Big Injun Sand (oil and water, 2198')	2149	
Total depth		2202

70554

no location
Found

