

M

LATITUDE 39° 35'

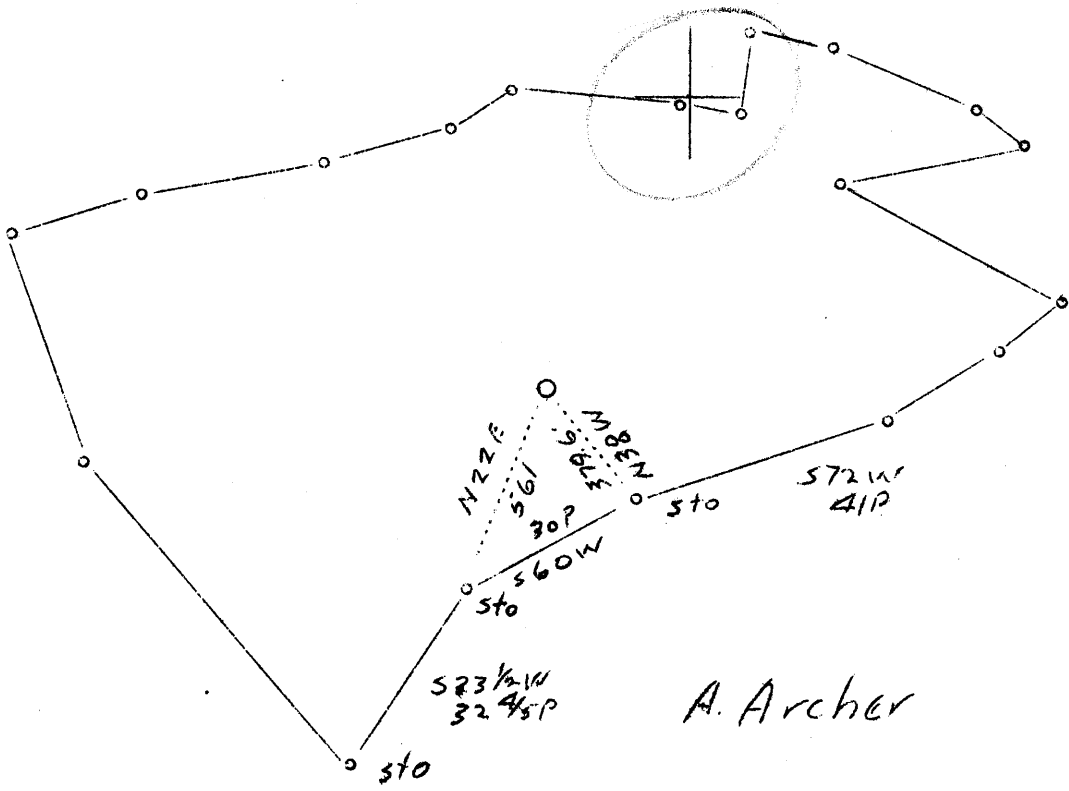
LONGITUDE 80° 55'

J. M. Wagner

Curtis

W. C. Grimes

A. Archer



2.95 W  
38 S  
abd. 41

Company	J.H. Beren
Address	Marietta, Ohio
Farm	W.A. Scamahorn
Tract	1 Acres 62 $\frac{1}{2}$ Lease No.
Well (Farm) No.	1 Serial No.
Elevation (Spirit Level)	941.5'
Quadrangle	New Martinsville (J.M.)
County	Tyler District Lincoln
Engineer	J.S. Haight
Engineer's Registration No.	Co. Surveyor T.C.
File No.	Drawing No.
Date	9-22-37 Scale 1"=30 rds.

STATE OF WEST VIRGINIA  
Department of Mines  
OIL AND GAS DIVISION  
CHARLESTON

WELL LOCATION MAP

File No. TYL-83

+ Denotes location of well on United States Topographic Maps, scale 1 to 62,500, latitude and longitude lines being represented by border lines as shown.

— Denotes one inch spaces on border line of original tracing.

WEST VIRGINIA DEPARTMENT OF MINES  
OIL & GAS DIVISION  
W E L L R E C O R D

Permit No. Tyl-83  
New Martinsville Quad.

Gas Well

CASING & TUBING

Company	I. H. Beren	10	120	120
Address	Box 73, Marietta, Ohio	8-1/4	980	980
Farm	W. A. Scamahorn ACRES 63	6-5/8	1575	1575
Well No.	1 ELEV. 941.5			
District	Lincoln - Tyler County			
Surface & Mineral	W. A. Scamahorn, Paden City, W. Va.			Coal at 595' 12"
Drilling commenced	1938			
Drilling completed	Dec. 1938			
Open Flow	-			
Volume	-			
Rock Pressure	-			
Oil	-			
Water	-			

Slate & Shale	0	65	
Mountain Sand	65	70	
Lime & Shale	70	595	
Pittsburgh Coal	595	596	
Lime & Shale	596	741	
Sand	741	751	
Red Rock	751	781	
Lime & Slate	781	869	
1st Cow Run	869	899	
Lime & Slate	899	985	
2nd Cow Run	985	995	
Lime & Shale	995	1125	
Sand	1125	1150	
Slate & Shale	1150	1375	
2nd Salt Sand	1375	1395	
Slate & Shale	1395	1575	Water 1410
Maxon Sand	1575	1625	
Slate	1625	1745	
Keener	1745	1760	Gas 1749
Slate	1760	1810	
Injun	1810	1905	Water 1814
Total Depth		1905	