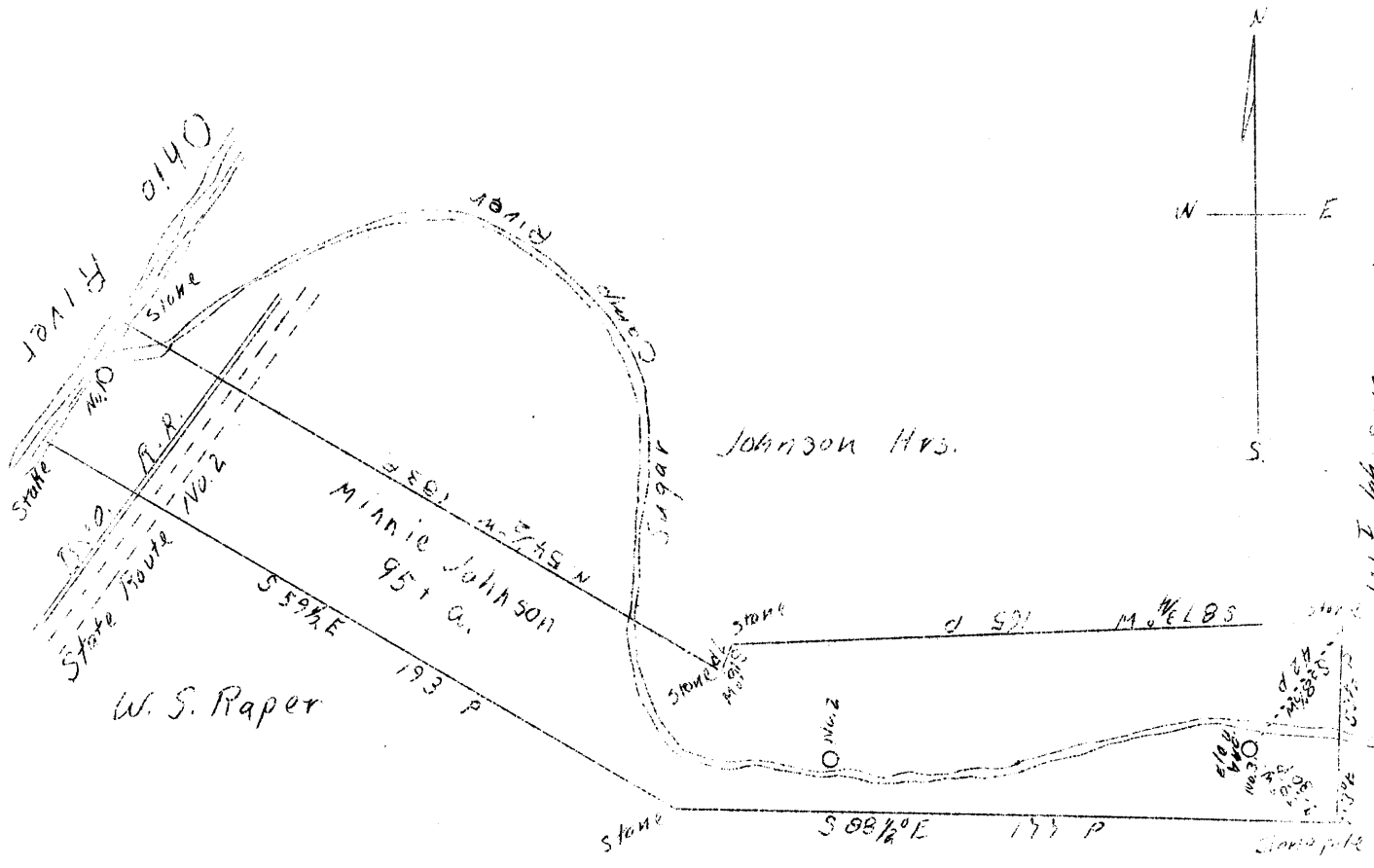


LATITUDE 39° 30'

LONGITUDE 80° 30'

Handwritten notes: "This is 13900-17000" and "Raven Rock" with a crosshair symbol.



First National Bank of St. Marys, W. Va.

Handwritten signature 'RWD' and date '2/3/39'.

402 W
1.15 S

new location

Company	Don E. White, et al
Address	Raven Rock, W. Va.
Farm	Minnie Johnson
Acres	95 plus
Well (Farm) No.	Three
Elevation (SP)	740'
Quadrangle	St. Marys NE.
County	Tyler
District	Union
Engineer	Jno. Triplett
Eng. Reg. No.	-
Date	Oct. 20, 1938
Scale	50 poles - 1"

STATE OF WEST VIRGINIA
 Department of Mines
 OIL & GAS DIVISION
 Charleston

WELL LOCATION MAP
 File No. TY-98

x Denotes location of well on U. S. Topographic Maps, scale 1 to 62,500, latitude and longitude lines being represented by border lines as shown.

- Denotes one inch spaces on border line of original tracing.

WEST VIRGINIA DEPARTMENT OF MINES

OIL & GAS DIVISION

WELL RECORD

Permit No. Tyl-98

- Well

St. Marys Quad. *F750T*

CASING & TUBING

Company	Don E. White et al	10	25
Address	Raven Rock, W. Va.	8-1/4	128
Farm	Minnie Johnson ACRES 100	6-5/8	721
Location	Sugar Camp Run	5-3/16	1143
Well No.	3 ELEV - <i>740</i>		
District	Union - Tyler County		
Surface & Mineral	Minnie Johnson, Bens Run, W. Va.		
Drilling commenced	Oct. 20, 1938		
Drilling completed	Jan. 28, 1939		
Date shot	None		
Volume	Dry		
Fresh Water	40 and 45		
Salt Water	1120 and 1130		

Formation Color *Har* TOP Base Result

Formation Color *Har* TOP Base Result

Light	W Salt	medium to	80'	
R. Rock	red	solid to	150	
Red Rock	red	s	420	520
Slate	white	s	595	
Red Rock	red		595	645
Sand	lgt	m	660	717
Slate	drk	m	725	770
Sand	lgt	m	770	788
Slate	lgt	m	788	860
Sand	lgt	s	860	965
Slate	blk	s	905	920
Sand	lgt	m	920	960
Slate	drk	m	985	1030
Lime Form	lgt	h	1030	1050
Slate	wh.	m	1050	1075
Sand	lgt	m	1075	1140
Shale	grey	m	1140	1190
Lime	grey	h	1190	1200
Shale	dark	m	1200	1245
Gas Sand	lgt	m	1245	1312
Mixon Sand	grey	m	1378	1395
Shale	dark	m	1395	1428
Keener Sand	grey	sol	1480	1515
Shale	dark	m	1515	1535
Injun Sand	grey	h	1535	1670
Shale	dark	s	1670	1680
Squaw Sand	grey	m	1680	1700
Total Depth				1703

*1480
740
740*