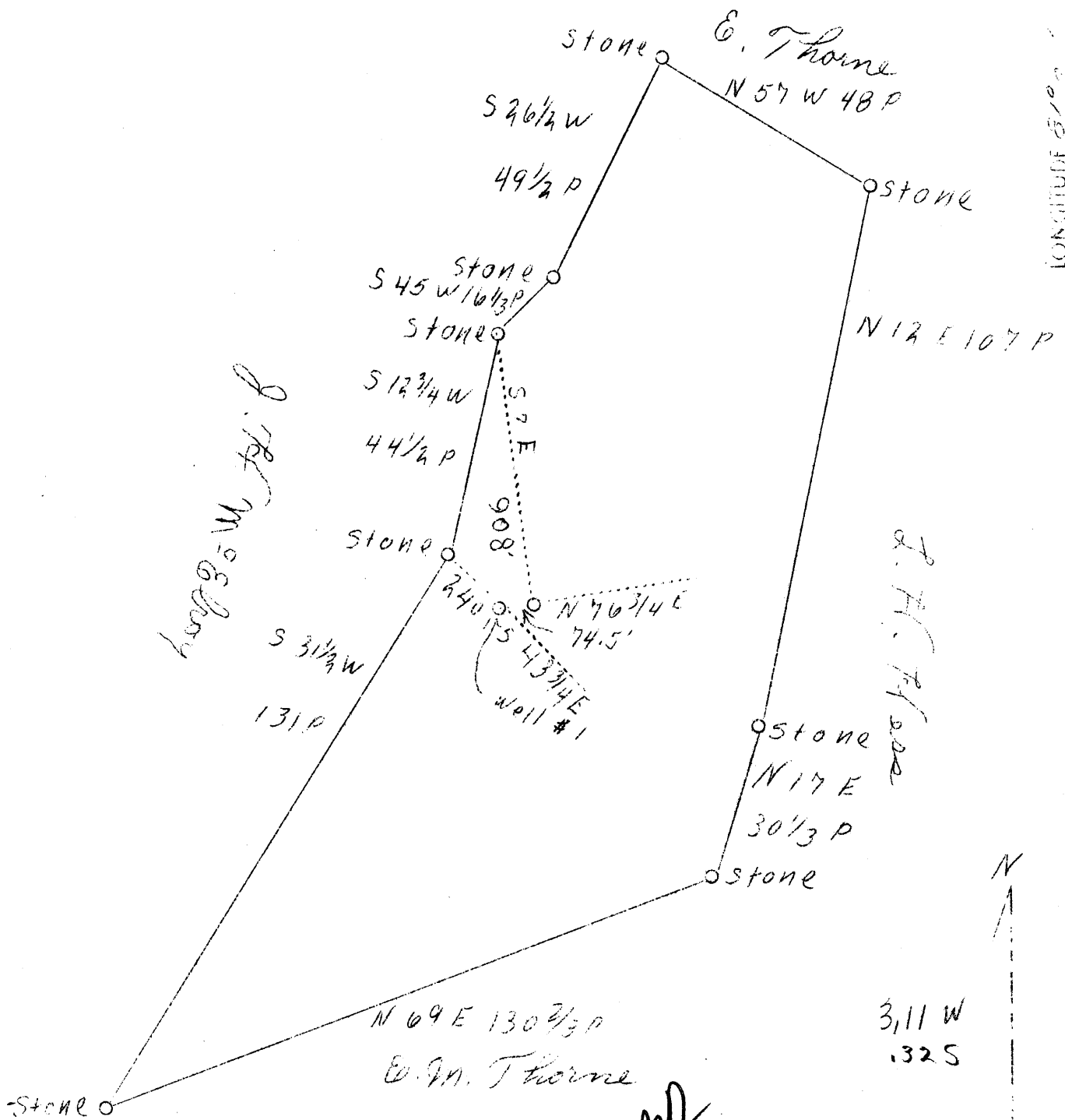


LATITUDE 39° 30'

LONGITUDE 81° 00'



Long 81° 00'

J. H. Haught

*ABD
12/38*

New location

Company	Earl Haught
Address	Bens Run
Farm	Jacqueline Thorne
Tract	One
Acres	64-1/4
Well (Farm) No.	Two
Elevation (SP)	734.8'
Quadrangle	Saint Marys N.E.
County	Tyler
District	Union
Engineer	J. S. Haught
Eng. Reg. No.	C.S.T.C.
Date	Oct. 24, 1938
Scale	1" - 30 rds.

STATE OF WEST VIRGINIA
 Department of Mines
 OIL & GAS DIVISION
 Charleston

WELL LOCATION MAP

File No. 441-99

x Denotes location of well on U. S. Topographic Maps, scale 1 to 62,500, latitude and longitude lines being represented by border lines as shown,

- Denotes one inch spaces on border line of original tracing.

WEST VIRGINIA DEPARTMENT OF MINES

CIL & GAS DIVISION

WELL RECORD

Permit No. Tyl-99

Dry Hole

Quad.

CASING & TUBING

Company J. E. Haught
 Address Bens Run
 Farm Jacqueline Thorn ACRES 121
 Well No. Two ELEV. - 734.8'
 District Union - Tyler County
 Surface & Mineral Jacqueline Thorn, Friendly, W.Va.
 Drilling commenced Nov. 17, 1938
 Drilling completed Dec. 15, 1938
 Date Shot None
 Open Flow -
 Volume -
 Rock Pressure -
 Oil -
 Water -

6-5/8 65
 5-3/16 744

Formation Color ^{HT} TOP Base Result Formation Color ^{HT} TOP Base Result

Soil		0	30						
Sand	h	30	60						
Slate		60	280						
Red Rock		280	300						
White Slate		300	310						
Sand		310	320						
Slate		320	380						
Sand		380	390						
Slate		390	460						
Sand		460	480						
Slate		480	575						
Red Rock		575	650						
Slate		650	680						
Red Rock		680	700						
Lime Shell		700	708						
Pink Rock		708	744						
Lime		744	776						
Brown Run Sand		776	790						