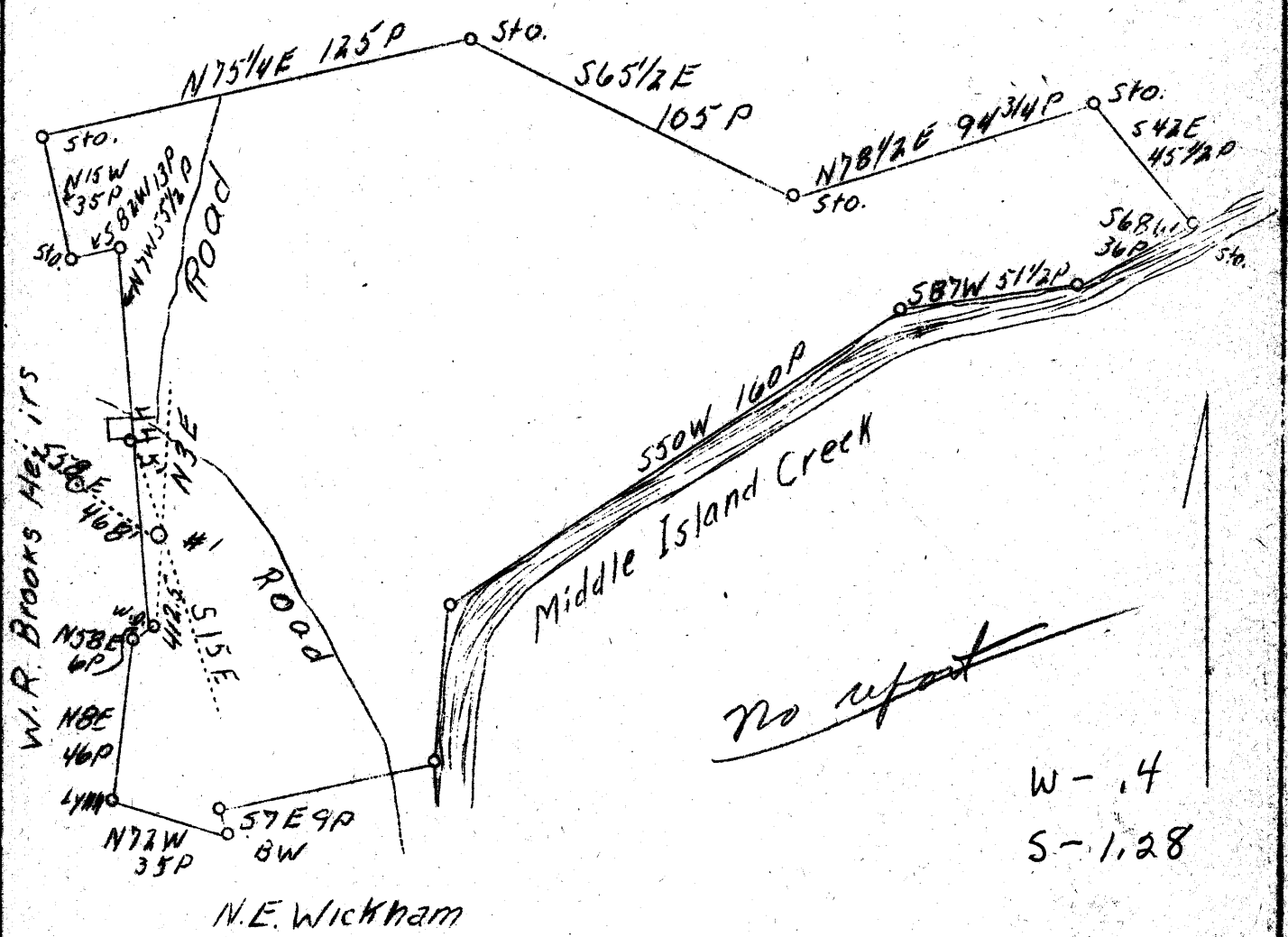


LATITUDE 39° 30'

LONGITUDE 81° 00'

1.26S  
0.37W



NEW LOCATION

Company	W. E. & Sarah C. Morgan
Address	Sistersville, W. Va.
Farm	Clarence Mikes
Tract	1
Acres	285
Well (Farm) No.	1
Elevation (SL)	741.89
Quadrangle	St. Marys NE
County	Tyler
District	Union
Engineer	J. S. Haught
Eng. Reg. No.	County Surveyor
Date	May 27, 1939
Scale	1" = 50 rods

STATE OF WEST VIRGINIA  
 Department of Mines  
 OIL & GAS DIVISION  
 Charleston

WELL LOCATION MAP

File No. TY-104

x Denotes location of well on U. S. Topographic Maps, scale 1 to 62,500, latitude and longitude lines being represented by border lines as shown.

\* Denotes one inch spaces on border line of original tracing.