

LATITUDE 39° 35'
39 32 30

LONGITUDE 81° 00'

J. E. SHREVE

JACOB MARKLEY

F. R. BROUGHMAN
95A

G. E. SHREVE

D. MOORE

CHARLES STEWART

JOHN PRICE

New location SURVEYED & PLATTED BY ROBERT CHALFANT PIKE, W. VA.

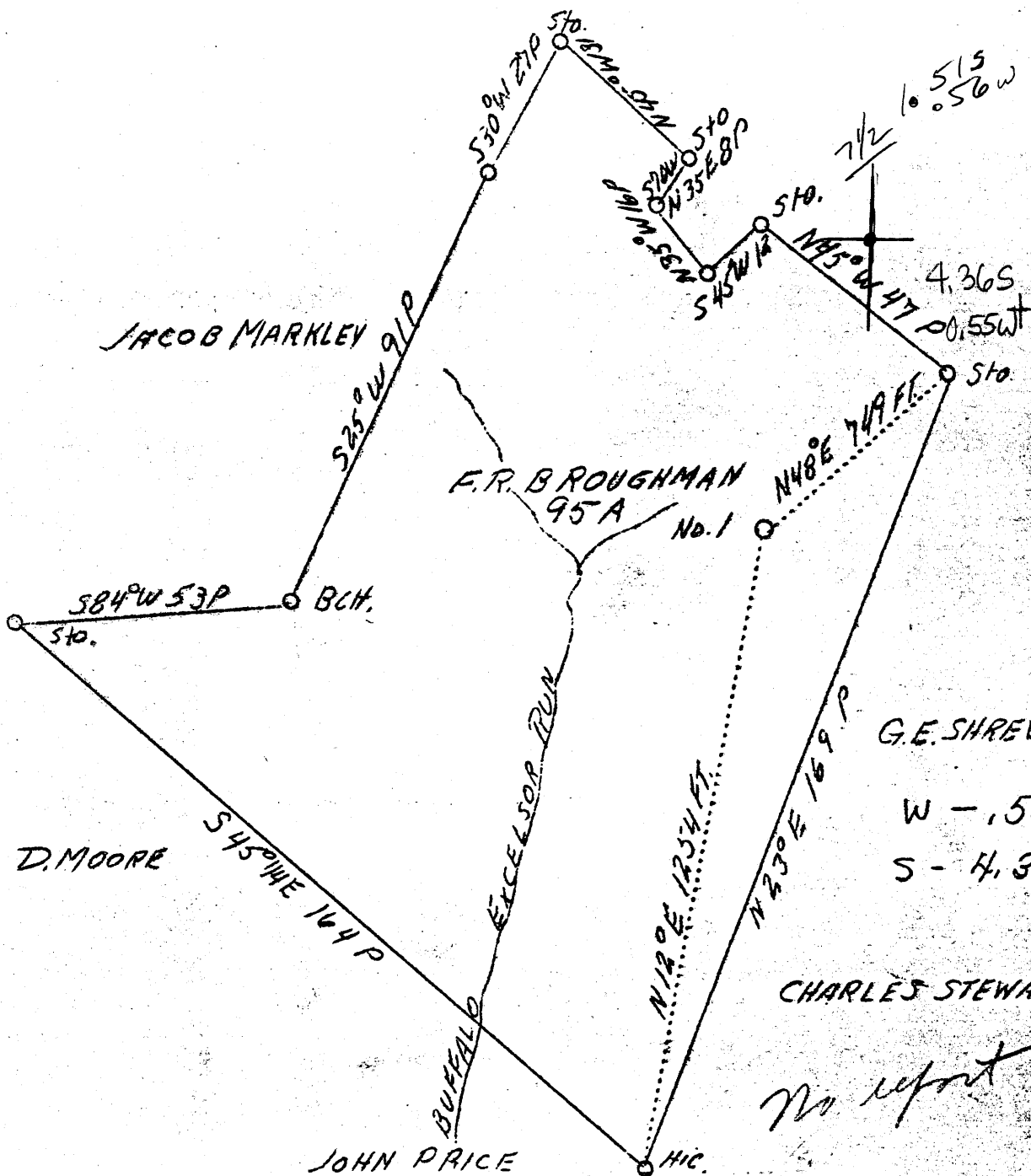
Company	Howard Hall
Address	St. Marys, W. Va.
Farm	F. R. Broughman
Tract	1
Acres	95
Well (Farm) No.	1
Elevation (SL)	796
Quadrangle	New Matamoras ^{1/2} SC WVa
County	Tyler
District	Union
Engineer	J. V. Dunbar
Eng. Reg. No.	65
File No.	23-L
Date	July - 1939
Scale	1" - 32 poles to 1 inch

STATE OF WEST VIRGINIA
Department of Mines
OIL & GAS DIVISION
Charleston

WELL LOCATION MAP
File No. TVI-106

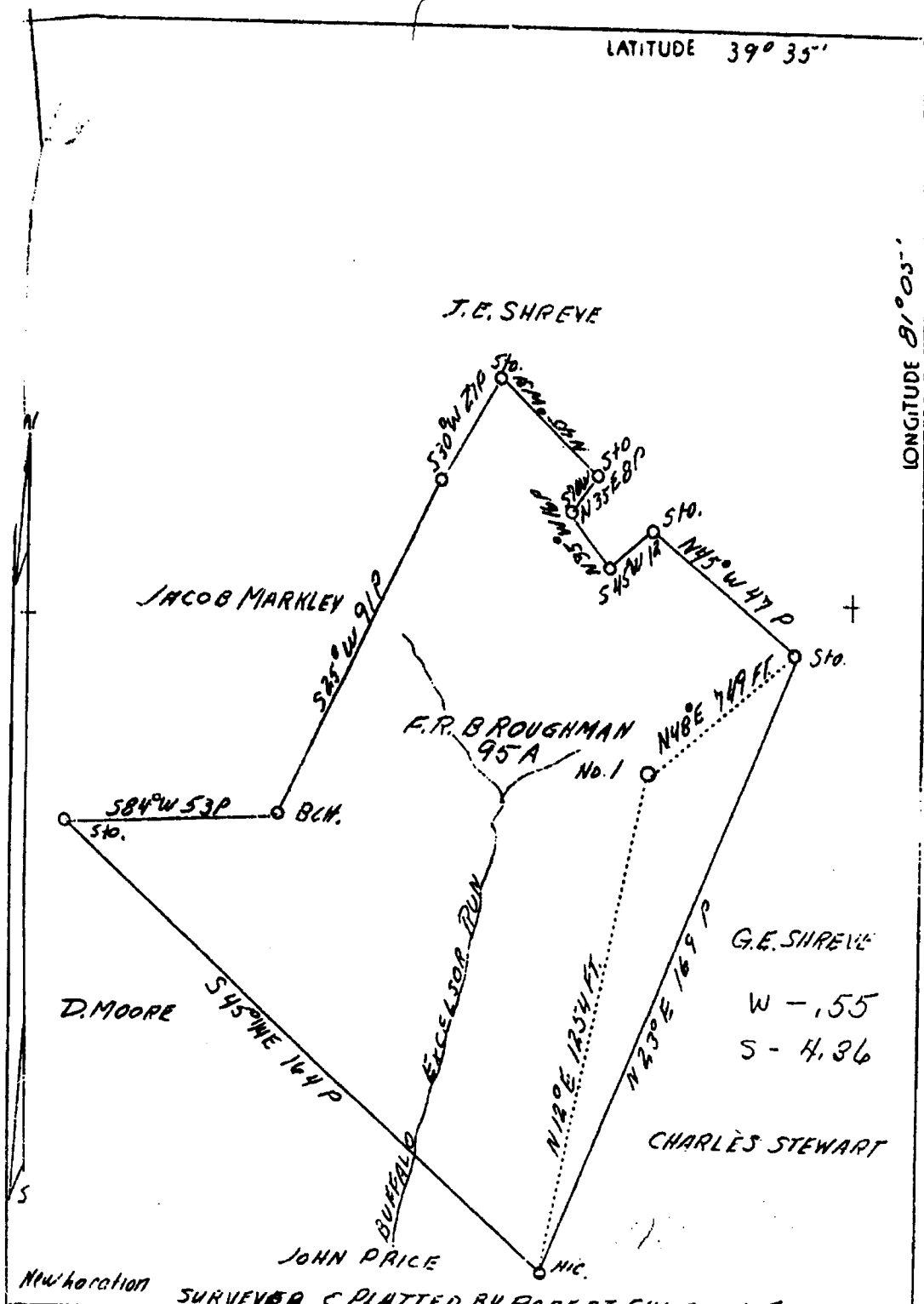
x Denotes location of well on U. S. Topographic Maps, scale 1 to 62,500, latitude and longitude lines being represented by border lines as shown.

- Denotes one inch spaces on border line of original tracing.



W - .55
S - 4.36

No report



New Location SURVEYED & PLATTED BY ROBERT CHALFANT PIKE, W. VA.

Company	Howard Hall
Address	St. Marys, W. Va.
Farm	F. R. Broughman
Tract	1
Acres	95
Well (Farm) No.	1
Elevation (SL)	796
Quadrangle	New Matamoras #5 WVa
County	Tylor
District	Union
Engineer	J. V. Dunbar
Eng. Reg. No.	65
File No.	23-L
Date	July - 1939
Scale	1" - 32 poles to 1 inch

STATE OF WEST VIRGINIA
 Department of Mines
 OIL & GAS DIVISION
 Charleston

WELL LOCATION MAP

File No. TVI-106

x Denotes location of well on U. S. Topographic Maps, scale 1 to 62,500, latitude and longitude lines being represented by border lines as shown.

- Denotes one inch spaces on border line of original tracing.

NP