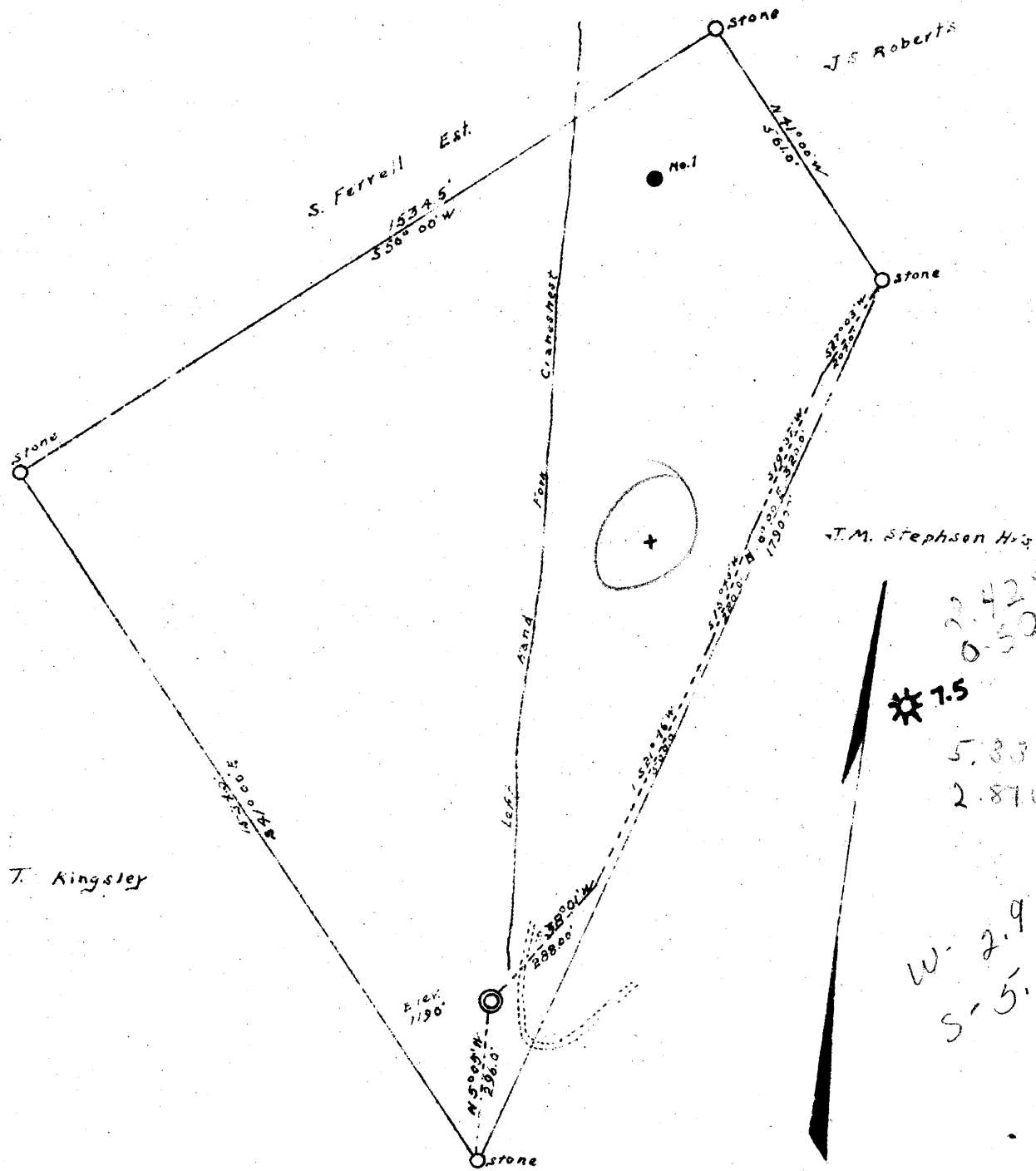


Latitude 39° 35'

Porters Falls 7.5-Minute Quad
NAD 83
39 32 30 12440 feet South
80 47 30 3553 feet West
39.507581 Latitude
80.804092 Longitude

81° 15'

Longitude



Company George Egan
 Address New Martinsville W. Va.
 Farm Claudia Myers
 Tract One Acres 401 Lease No. 1
 Well (Farm) No. Two Serial No. _____
 Quadrangle New Martinsville
 County Tyler
 District Ellsworth
 Engineer George L. W. Barber
 EL 1190
 Date Feb. 5, 1941 Scale 1" = 300'

STATE OF WEST VIRGINIA
 DEPARTMENT OF MINES
 OIL AND GAS DIVISION
 CHARLESTON

WELL LOCATION MAP
 FILE NO. TYL-121

+ Denotes location of well on United States
 Topographic Maps, scale 1 to 62,500, lat-
 itude and longitude lines being represented
 by border lines as shown.

WEST VIRGINIA DEPARTMENT OF MINES
OIL & GAS DIVISION
W E L L R E C O R D

Porters Falls 7.5-Minute Quad
NAD 83
39 32 30 12440 feet South
80 47 30 3553 feet West
39.507581 Latitude
80.804092 Longitude

Permit No. Tyler 121-D
Company George F. Eagon
Address 136 S. Main St., N. Martinsville, W. Va. 6 5/8 1348 1348
Farm Amanda Soles Acres 40 5 3/16 1953 1953
Location Elk Fork
Well No 2 Elev. 1190' Casing not cemented
District Ellsworth Taylor County
Surface Claude Myers, 124 S. Main St. Native Coal
New Martinsville, W. Va. 340' to 341'
Mineral Claudie Solo Myers Pgh. Coal
Commenced Feb. 19, 1941 802 to 803
Completed June 28, 1941
Shot No Total -Depth 2131
Flow 8/10ths M in 2"
Volume 440,000 C.F.
Rock Pressure 39 lbs.
No Oil
Salt Water 1350 with 2 blrs. pr. hr.

Clay	0	15	
Shale	15	100	
Red Rock	100	120	
Sand	120	130	
Shale	130	185	
Red Rock	185	200	
Lime Shells	200	260	
Red Rock	260	300	
Lime Shells	300	340	
Native Coal	340	341	-Washington?
Lime Shells	341	400	
Red Rock Shells	400	600	
Lime	600	650	
Red Rock	650	660	
Lime	660	715	
Sand	715	750	
Lime Broken	750	802	
Pitts. Coal	802	803	
Lime H	803	835	
Slate	835	860	
Murphy Sand	860	900	
Black Shells	900	950	
Red Rock	950	1100	
Gray Shale	1100	1215	
L. Dunkard Sand	1215	1280	
Black Shale & Sand Shells	1280	1325	
Big Dunkard Sand	1325	1380	Water 1350 -2 blrs. pr. hr.
Black Shale	1380	1385	
Gas Sand	1385	1430	
Black Shale	1430	1456	
Sand	1456	1875	
Slate	1875	1911	
Maxon Sand	1911	1973	Gas 1940-6/10 M in 4"
Slate	1973	1990	Rock 265# in 5 1/2 hrs. blow down
Little Lime	1990	2005	
Pencil Cavo	2005	2011	
Big Lime	2011	2066	
Big Injun Sand	2066		Gas 2074-2099 8/10 M in 2"
			440,000 C.F.
TOTAL DEPTH		2131	

NOTE: This well first operated from Maxon Sand later drilled to the Injun Sand. Now being operated from Injun Sand.

2011
130
131
130
951

WEST VIRGINIA DEPARTMENT OF MINES
OIL & GAS DIVISION
W E L L R E C O R D

Porters Falls 7.5-Minute Quad
NAD 83
39 32 30 12440 feet South
80 47 30 3553 feet West
39.507581 Latitude
80.804092 Longitude

Permit No. Tyl 121
New Martinsville Quad.
Company
Address
Farm
Location
Well No.
District
Surface
Mineral
Commenced
Completed
Oil & Water

G.F. Eagan
136 S. Main St., New Martinsville, W.Va.
Claudia Myers Acres 40
Elk Fork | 6 5/8 1348 1348
2 Elev. -- 5 3/16 1953
Ellsworth Tyler County 2" tub. 2210
G.F. Eagan
No Packer in drilling
deeper
To present depth 1944
2173-2185 about 1 bbl. per 24 hrs.

DRILLED DEEPER

Total depth was 2131
Total Depth now 2210 All in Big Injun Sand
Gas & Water 2156-2166
Oil & Water 2173-2185

I still don't know what to do with it. Cannot get any help. May drill it on to Gordon Sand. No good where it is. When I get help will take it on or plug it.