

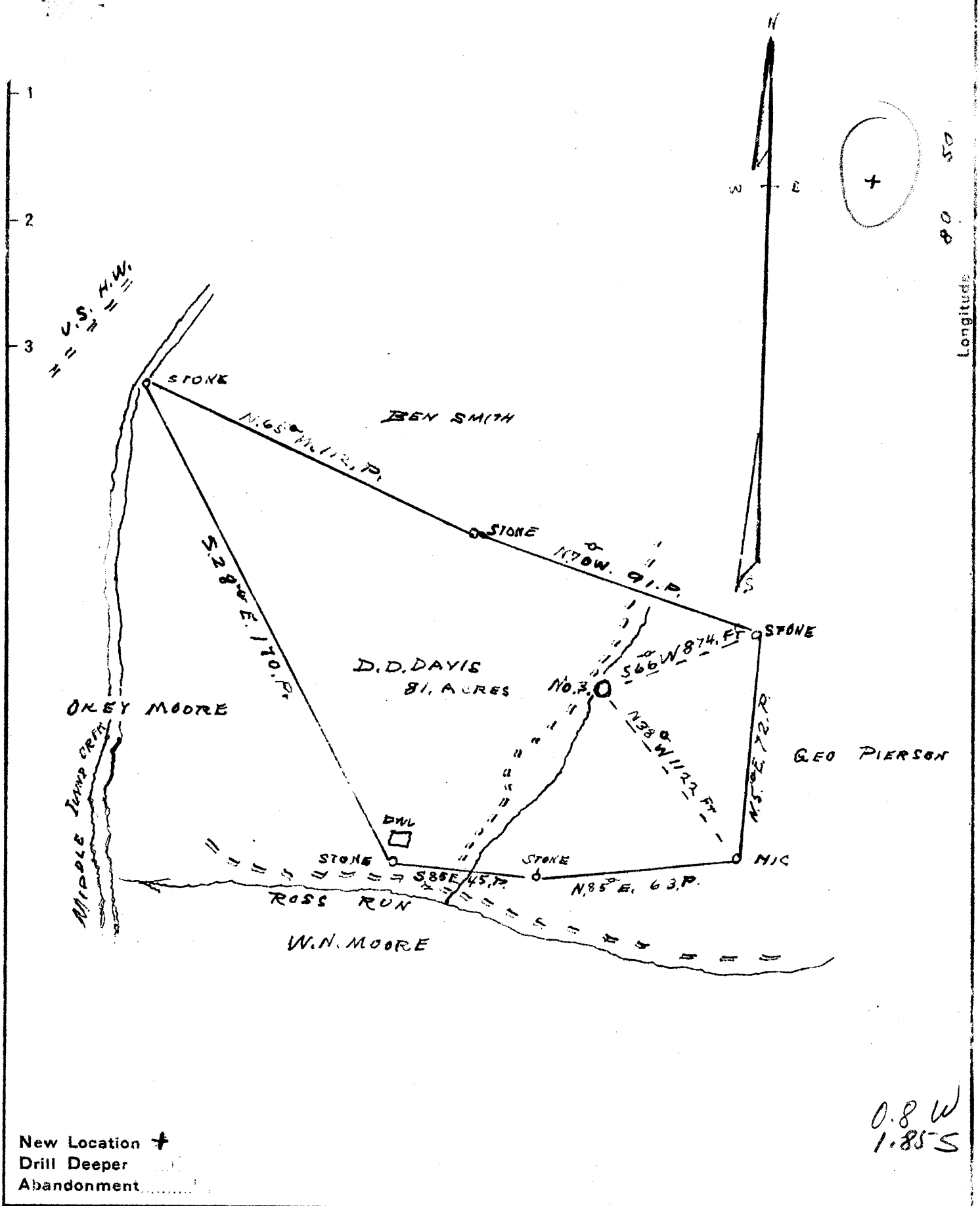
1

2

3

Latitude 39 25

Longitude 80 50



New Location +
 Drill Deeper
 Abandonment

0.8 W
 1.85 S

Company	TYLER WOOD OIL & GAS CO. % MOUNTAIN IRON SUPPLY CO.
Address	PETERSBURG W.VA
Farm	D.D. DAVIS
Tract	Acres 81 Lease No.
Well (Farm) No.	3 Serial No.
Elevation (Spirit Level)	803
Quadrangle	WEST UNION
County	TYLER District CENTERVILLE
Engineer	J. L. Dunbar
Engineer's Registration No.	65
File No.	E-23-L Drawing No.
Date	May 5 th 1941 Scale 40"=1

STATE OF WEST VIRGINIA
 DEPARTMENT OF MINES
 OIL AND GAS DIVISION
 CHARLESTON

WELL LOCATION MAP
 FILE NO. TYL-123

+ Denotes location of well on United States Topographic Maps, scale 1 to 62,500, latitude and longitude lines being represented by border lines as shown.

- Denotes one inch spaces on border line of original tracing.

WEST VIRGINIA DEPARTMENT OF MINES
OIL & GAS DIVISION
W E L L R E C O R D

Permit No. Tyl-123
Company
Address
Farm
Well No
District
Surface
Mineral
Commenced
Completed
Oil

Tyler Wood Oil & Gas Co
Parkersburg, W.Va.
D.D. Davis Acres 81
3 Elev. 803
Centerville, Tyler County
D.D. Davis, Joseph's Mills, W.Va.
"
5-9-41

5 bbls., 1st 24 hrs.

Oil Well		
Casing & Tubing		
8 $\frac{1}{2}$	450	450
6 5/8	930	930
5 3/16	1700	1700
2		1883

Pgh. Coal	477	478	
Pgh. Lime	478	492	
Slate & Shells	492	590	
Red Rock	590	620	
Lime	620	630	H
Slate Bl	630	640	
Red Rock	640	720	
Slate	720	805	
Rock Pink	805	810	
L. Dunkard	810	855	
Slate & Shells	855	930	
B. Dunkard	930	960	
Slate	960	1090	
Sand	1090	1120	
Slate Bl	1120	1127	
Sand-1st Salt	1127	1175	
Slate	1175	1210	
Sand-2nd Salt	1210	1335	Water 1 Bailer
Slate	1335	1450	
Sand-3rd Salt	1450	1475	
Slate Bk	1475	1530	
Sand	1530	1562	
Slate	1562	1575	
Sandy Lime	1575	1608	
Maxon Sand	1608	1640	Water
Slate Bk	1640	1670	
Sand	1670	1700	
B. Lime	1700	1778	
Top of Injun	1778	1860	
Break	1862	1866	Gas 1835
Sand	1866	1880	Oil 1845
Bottom Hole		1883	