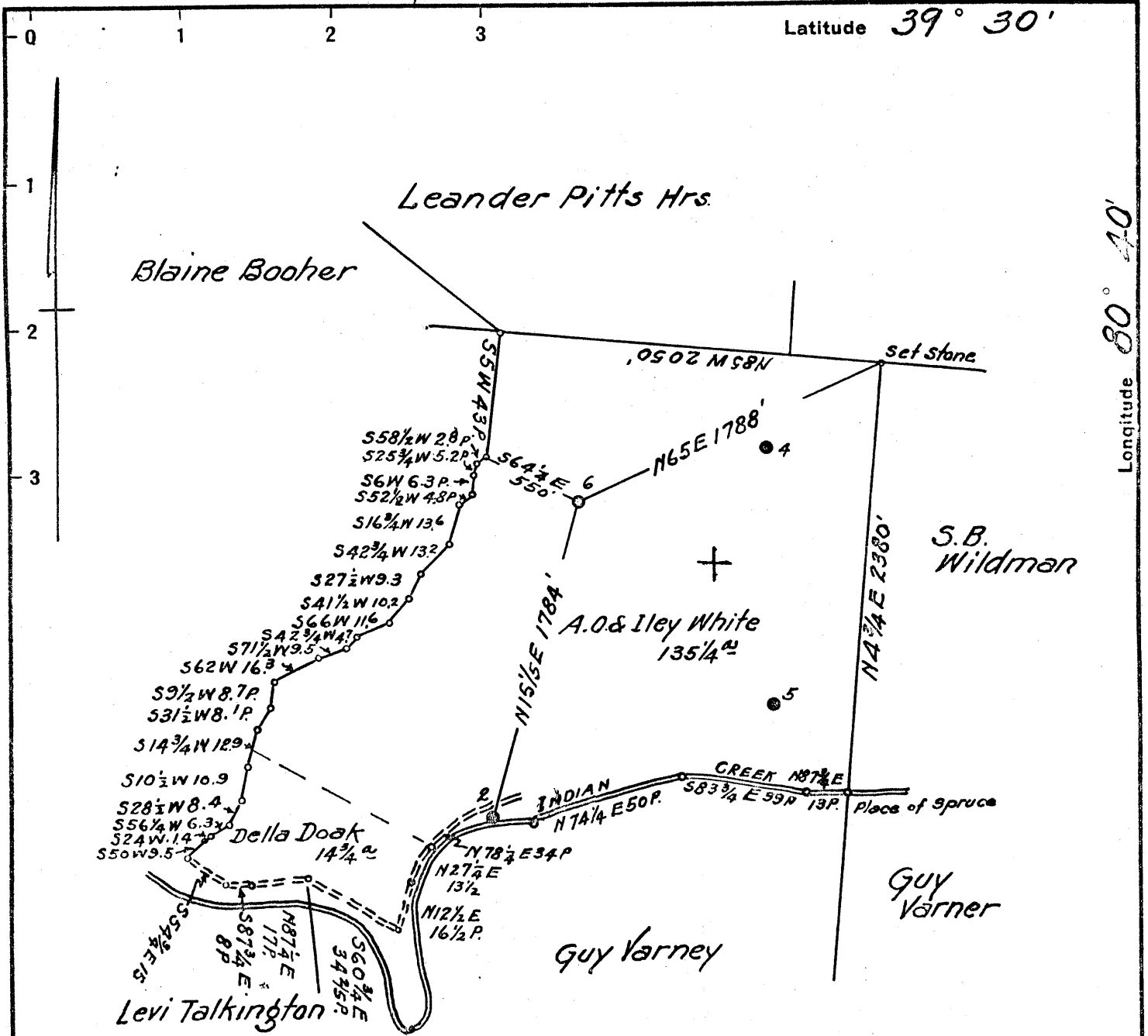


Latitude 39° 30'

Longitude 80° 40'



Surface: A.O. & Iley White
 Alvy, W. Va.

Coal: Iley White et al
 Alvy, W. Va.

New Location
 Drill Deeper
 Abandonment

Issued 5-14-69

NI-SI-W6 Map N47

Company C.R. Feick
South Penn Natural Gas Co.
1012 Walker, W. Va.

Address Rockwellburg, W. Va.

Farm Joseph McCormick

Tract _____ Acres 150 Lease No. 12794

Well (Farm) No. 6 Serial No. _____

Elevation (Spirit Level) 1047.31

Quadrangle Centerpoint NW

County Tyler District M^cElroy

Engineer Emmon Haines

Engineer's Registration No. _____

File No. _____ Drawing No. _____

Date May 12, 1942 Scale 1" = 800'

STATE OF WEST VIRGINIA
 DEPARTMENT OF MINES
 OIL AND GAS DIVISION
 CHARLESTON

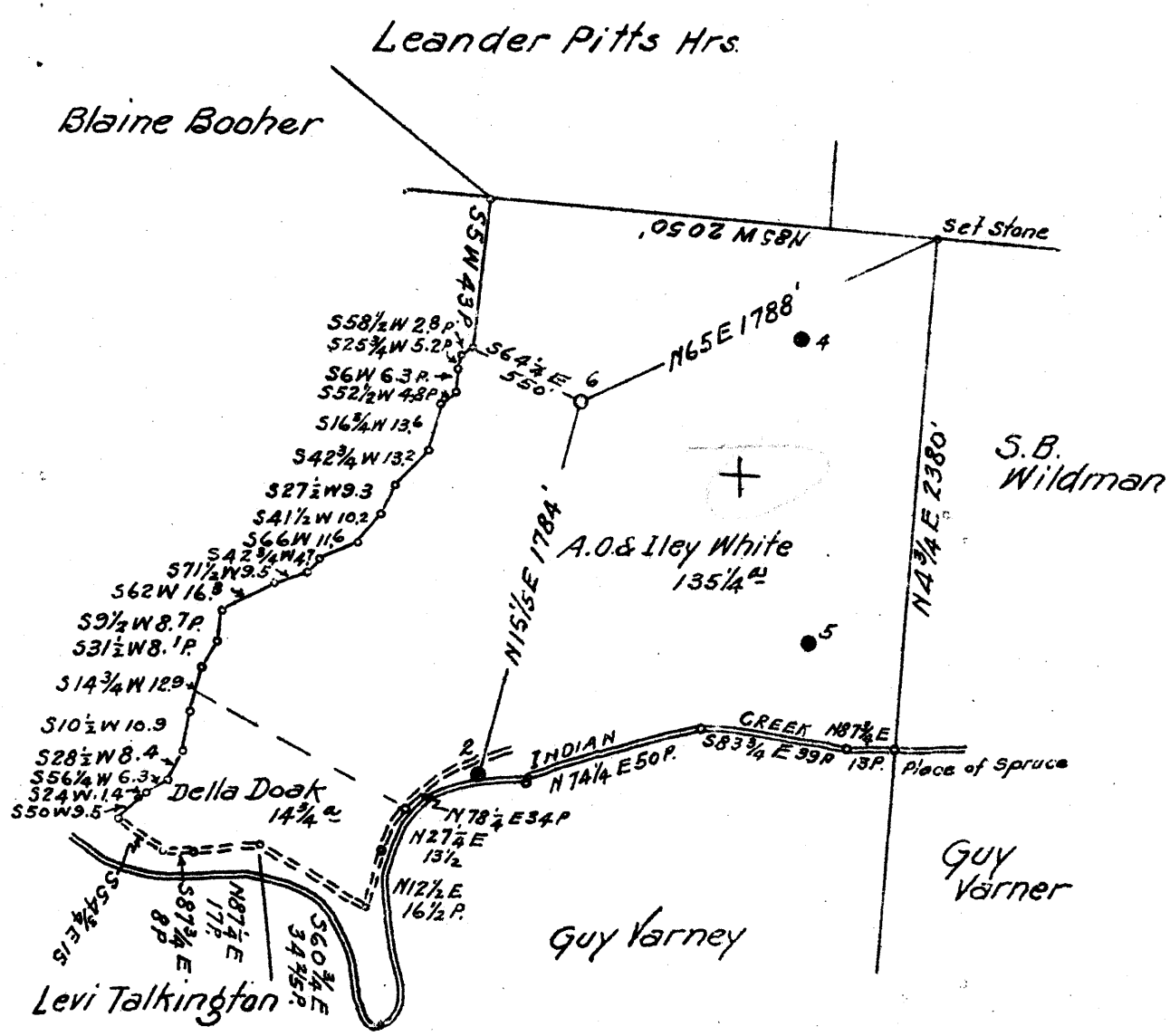
WELL LOCATION MAP
 FILE NO. Jyl-132-P

+ Denotes location of well on United States Topographic Maps, scale 1 to 62,500, latitude and longitude lines being represented by border lines as shown.

- Denotes one inch spaces on border line of original tracing.

Latitude 39° 30'

Longitude 80° 40'



Surface: A.O. & Iley White
 Alvy, W. Va.
 Coal: Iley White et al
 Alvy, W. Va.

3.85
 2.84 W

New Location
 Drill Deeper
 Abandonment

HI-51-W6 Map NA7

Company South Penn Natural Gas Co.
 Address Parkersburg, W. Va.
 Farm Joseph Mc Cormick
 Tract _____ Acres 150 Lease No. 12794
 Well (Farm) No. 6 Serial No. _____
 Elevation (Spirit Level) 1047.31
 Quadrangle Centerpoint
 County Tyler District Mc Elroy
 Engineer Emman Haines
 Engineer's Registration No. _____
 File No. _____ Drawing No. _____
 Date May 12, 1942 Scale 1" = 800'

STATE OF WEST VIRGINIA
 DEPARTMENT OF MINES
 OIL AND GAS DIVISION
 CHARLESTON

WELL LOCATION MAP
 FILE NO. Jyl-132

+ Denotes location of well on United States Topographic Maps, scale 1 to 62,500, latitude and longitude lines being represented by border lines as shown.

- Denotes one inch spaces on border line of original tracing.

WEST VIRGINIA DEPARTMENT OF MINES
OIL & GAS DIVISION
WELL RECORD

Permit No. Tyl-132
 Centerpoint Quad.
 Company
 Address
 Farm
 Location
 Well No
 District
 Surface
 Mineral

 Commenced
 Completed
 Date shot
 Oil
 Salt Water

South Penn Natural Gas Company
 Union Trust Bldg., Parkersburg, W.Va.
 Joseph McCormick Acres 150
 Indian Creek
 6 Elev. 1047.31
 McElroy Tyler County
 A.O. & Iley White, Alvy, W.Va.
 Iley McCormick White et al,
 c/o A.J.Allen, agt., Middlebourne, W.Va.
 June 20, 1942
 July 20, 1942
 See below
 1 1/2 bbls. 1st 24 hrs.
 1590' 1 blr. pr. hr.

Oil(?) Well
 CASING & TUBING
 10 398' Same
 8 1/4 1343 "
 6 5/8 2067 "
 2 2205 "
 Cond. 16'
 Coal(?) 642' 2"

Red Rock	0	50	Shells	1453	1470
Lime	50	65	Sand	1470	1487
Blue Mud	65	95	Slate	1487	1498
Sandy Lime	95	135	Lime	1498	1535
Red Rock	135	165	Gray Slate	1535	1550
Gray Slate	165	185	Salt Sand	1550	1595
Lime Shells	185	225	Slate	1595	1603
Red Rock	225	265	Sand	1603	1623
Lime	265	275	Dark Slate	1623	1675
Slate	275	295	White Sand	1675	1720
Lime	295	320	Slate	1720	1735
Lime & Slate	320	395	Shale	1735	1753
Lime	395	410	Slate	1753	1762
Sand	410	440	Salt Sand	1762	1828
Red Rock	440	500	Slate	1828	1840
Lime	500	515	Slate & Lime	-	-
Slate	515	540	Shells, dark	1840	1864
Sand	540	560	White, hard Lime	1864	1898
Gray Shells	560	610	Slate	1898	1905
Lime	610	740	Red Rock	1905	1965
Broken	740	756	Dark Slate	1965	1985
Lime	756	770	Little Lime	1985	2005
Lime Shells	770	820	Pencil Cave	2005	2014
Slate	820	842	Blue Monday	2014	2043
Pitts. Coal	842	844	Big Lime	2043	2086
White Lime	844	860	Big Injun Sand	2086	
Lime, broken	860	863	TOTAL DEPTH		2271
White Sand	863	887			
White Slate	887	915	Show oil 2195-2204		
Lime	915	940	Filled up to 2217		
Sand	940	960			
Red Rock	960	980	SHOT RECORD:		
Lime Shells	980	990	7-21-42 30 qts. 2194' 2205'		
Red Rock	990	1035	7-28-42 90 qts. 2186-2197'		
White Lime	1035	1070			
Shells	-	-			
Sand	1070	1090			
Shale	1090	1110			
Lime shells	1110	1135			
Lime	1135	1187			
Dark Slate	1187	1226			
Little Dunkard Sand	1226	1240			
Slate	1240	1245			
Lime	1245	1265			
Slate & Shells	1265	1298			
White Lime	1298	1304			
Gritty Broken Lime	1304	1329			
Big Dunkard	1329	1364			
Slate	1364	1372			
Lime	1372	1400			
Slate	1400	1410			
Gas Sand	1410	1447			
Dark Slate	1447	1453			
Slate & Lime	-	-			

2014
 1047

2043
 1047

JOSEPH McCORMICK NO. 6 WELL.

McElroy District, Tyler County, W. Va.

By South Penn Natural Gas Co., Parkersburg, W. Va.

Located 3.8 mi. S. of 39° 30' and 2.84 mi. W. of 80° 40' - NW - Centerpoint
 Quadrangle.

Elevation, 1047.31' L.

Permit Tyl-132.

Completed July 20, 1942.

Oil well in Big Injun Sand; 1½ bbls. oil 1st 24 hrs. -

Samples from 2177 to 2271' examined by J. H. C. Martens.

All of the samples are from the Big Injun Sand.

Record to RGT from Martens May 4, 1944.

Top. Bottom. Thickness.

POCONO FORMATION, 94+ FEET

2177 - 2182	5	Sandstone, white, medium-grained
2182 - 2199	17	Sandstone, light-gray, fine to very fine
2199 - 2217	18	Sandstone, white, fine
2217 - 2223	6	Sandstone, gray, fine
2223 - 2271	48	Sandstone, white, fine
2271		Total depth