

- New Location
- Drill Deeper
- Abandonment

No Coal

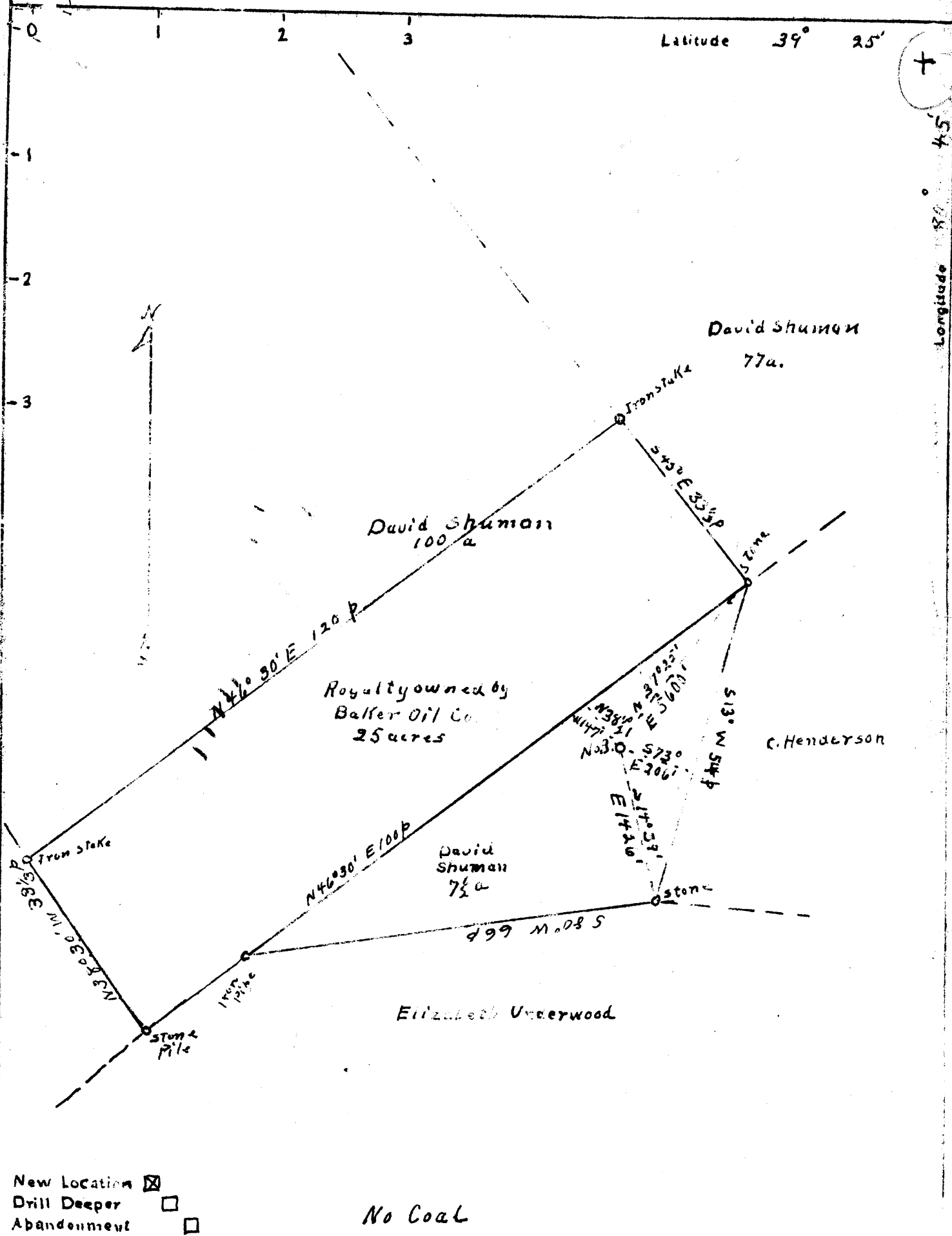
Company MINTYRE + UNDERWOOD
 Address ALVY, W.V.
 Farm Dave Shuman
 Tract 1 Acres 7 1/2 + 25 Lease No. 2
 Well (Farm) No. 3 Serial No. _____
 Elevation (Spirit Level) 839.60
 Quadrangle West Union
 County TYLER District M&E 1004
 Engineer Tom L. Figgie
 Engineer's Registration No. _____
 File No. O & G 3 Drawing No. 178-43
 Date 6-28-43 Scale 1" = 320' or 20p

STATE OF WEST VIRGINIA
 DEPARTMENT OF MINES
 OIL AND GAS DIVISION
 CHARLESTON
 WELL LOCATION MAP
 FILE NO. TYL-135

+ Denotes location of well on United States Topographic Maps, scale 1" = 2.5 miles, latitude and longitude lines being represented by border lines as shown.
 - Denotes search spaces on border line of original tracing.

Latitude 39° 25'

Longitude 80° 45'



Company MINTYRE & UNDERWOOD
 Address ALVA, W.VA.
 Farm Dave Shuman
 Tract 1 Acres 7 1/2 + 25 a Lease No. 2
 Well (Farm) No. 3 Serial No. _____
 Elevation (Spirit Level) 839.60
 Quadrangle WEST Union
 County TYLER District MARY
 Engineer Tom J. Riggle
 Engineer's Registration No. _____
 File No. 046.3 Drawing No. 178-43
 Date 6-28-43 Scale 1" = 320' or 20 P

STATE OF WEST VIRGINIA
 DEPARTMENT OF MINES
 OIL AND GAS DIVISION
 CHARLESTON

WELL LOCATION MAP
 FILE NO. TYL-135

+ Denotes location of well on United States Topographic Maps, scale 1 to 25,000. Latitude and longitude lines being represented by border lines as shown.

- Denotes search spaces on border line of original tracing.

6-0 94

WEST VIRGINIA DEPARTMENT OF MINES
OIL & GAS DIVISION
W E L L R E C O R D

Permit No. Tyl 135
West Union Quad.
Company
Address
Farm
Location
Well No
District
Surface
Mineral

Commenced
Completed
Date shot

Open flow
Rock Pressure
Oil
Fresh Water
Salt Water

McIntyre & Underwood
Alloy, W.Va.
David Sherman A-32
George's Run
Three Elev. -- 3900
McElroy Tyler County
Sherman, Shirley, W.Va.
McIntyre & Underwood
Alloy, W.Va.
About 7-10-43
1-24-44
1-25 Depth 2665 to 2675
with 20 qts. Nitro Glycerine
No Test
450 lbs. in 3 hrs.
None
275'
1625'

Gas Well
CASING & TUBING

Conductor 16' left in
10 395 0
8 1/2 1124 -
6 5/8 1745 left in
2 2655
No liners used

Bottom Hole Packer
Size 6 5/8
Depth 2650

Perf. top No
" bot Open

Casing not cemented

Coal at 610' 6.11"

(All Kinds formation, all colors, both hard and soft) Gas 2669

Maxon	1877	1920	
Little Lime	1927	1970	
Pencil Cave	1970	1975	
Big Lime	1975	2045	
Big Injun	2045	2140	
Squaw	2140	2245	
Fifty Foot	2528	2540	— Berca?
Gordon Stray	2604	2621	
Gordon	2621	2672	
TOTAL		2701	Gas 2621-2672

1975
845
1735

210
1263

WEST VIRGINIA DEPARTMENT OF MINES
OIL & GAS DIVISION
WELL RECORD

Permit No. Tyl 135
West Union Quad.

Gas Well
CASING & TUBING

Company
Address
Farm
Location
Well No
District
Surface
Mineral

McIntyre & Underwood
Alloy, W.Va.
David Sherman A-32
George's Run
Three Elev. -- 39.00
McElroy Tyler County
Sherman, Shirley, W.Va.
McIntyre & Underwood
Alloy, W.Va.

Conductor 16' left in
10 395 0
8 1124 -
6 5/8 1745 left in
2 2655
No liners used

Commenced
Completed
Date shot

About 7-10-43
1-24-44
1-25 Depth 2665 to 2675

Bottom Hole Packer
Size 6 5/8
Depth 2650

Open flow
Rock Pressure
Oil
Fresh Water
Salt Water

with 20 qts. Nitro Glycerine Perf. top No
No Test " bot Open
450 lbs. in 3 hrs.
None
275'
1625'

Casing not cemented
Coal at 610' 6.11"

(All Kinds formation, all colors, both hard and soft) Gas 2669

Maxon
Little Lime
Pencil Cave
Big Lime
Big Injun
Squaw
Fifty Foot
Gordon Stray
Gordon
TOTAL

1877	1920	
1927	1970	
1970	1975	
1975	2045	
2045	2140	
2140	2245	
2528	2540	— Berea?
2608	2621	
2621	2672	
TOTAL	2701	Gas 2621-2672

1975
840

1135

100
2 112

212

1975
135

2110
240

1870