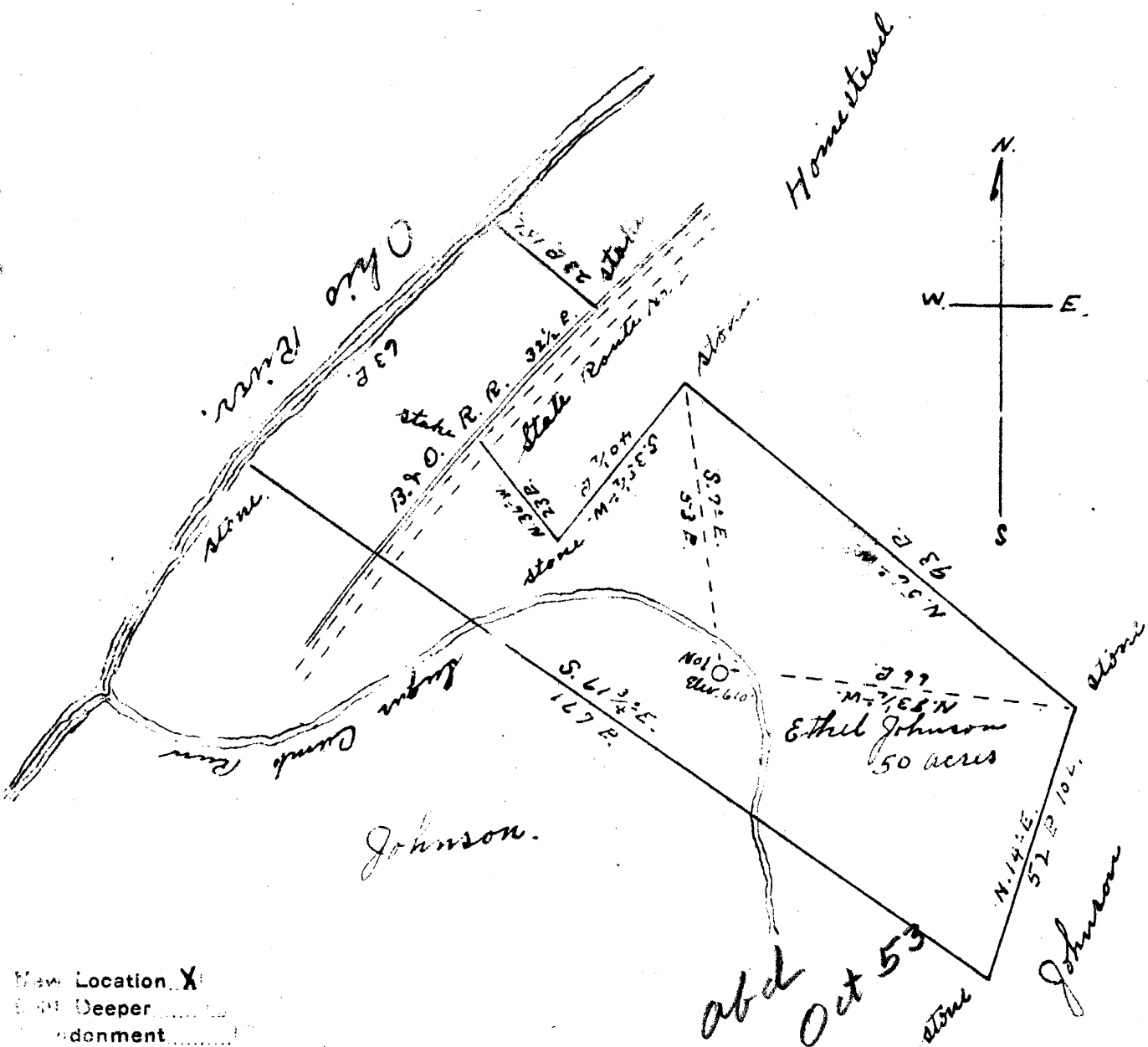


0.83 S
0.33 W



New Location X
 Depth Deeper
 Abandonment

Company Don E. White & others
 Address Raven Rock W.Va.
 Farm Ethel Johnson
 Tract _____ Acres 50 Lease No. _____
 Well (Farm) No. 1 Serial No. _____
 Elevation (Spirit Level) 610'
 Mandrangle St. Marys, W.Va.
 County Tyler District Union
 Engineer Jno Triplett
 Engineer's Registration No. _____
 File No. _____ Drawing No. _____
 Date Feb. 19, 1944 Scale 30 P = 1"

STATE OF WEST VIRGINIA
 DEPARTMENT OF MINES
 OIL AND GAS DIVISION
 CHARLESTON

WELL LOCATION MAP
 FILE NO. TyL-139

+ Denotes location of well on United States Topographic Maps, scale 1 to 62,500, latitude and longitude lines being represented by border lines as shown.

- Denotes one inch spaces on border line of original tracing.

WEST VIRGINIA DEPARTMENT OF MINES
OIL & GAS DIVISION
W E L L R E C O R D

Permit No. Tyl 139

Gas Well
CASING & TUBING

St. Marys Quad.

Company

Don E. White

Address

Raven Rock, W.Va.

10 50 50

Farm

Ethel Johnson Acres 94

8 1/2 135 135

Location

Ohio River

6 5/8 700 700

Well No.

One Elev. 610

2 1230 1230

District

Union Tyler County

Surface

Ethel Johnson, Bems.Run, W.Va. No liners used

Mineral

Same

Net shot

Rock Pressure

250 lbs. -- hrs.

Two Gas Anchor Packers
Size 6 5/8 x 2
One set at 730
One at 1150

Perf. top 1215
" bot 1217

Gravel

to 50

Top Big Red Cave

300 350

Sand ^{alt} Gr

700 750 1st Salt Sand

Maxon Sand Wh

1200 1230

150,000' gas encountered in first Salt Sand from 700 to 720. 250 lbs. pressure.

100,000' gas encountered in Maxon Sand from 1200 to 1220, increased gas pressure to 430 lbs. Now connected to Hope Gas Line.

Bottom Hole

1230

We aim in our drilling to keep a very complete record of all wells for our own information, as well as for your department. The record of the Johnson well was destroyed by a rain storm and the record I am enclosing herewith is taken from my memory and is correct, but is as complete as I can furnish. Very sorry that this happened but was unavoidable.

1200
1210
1220