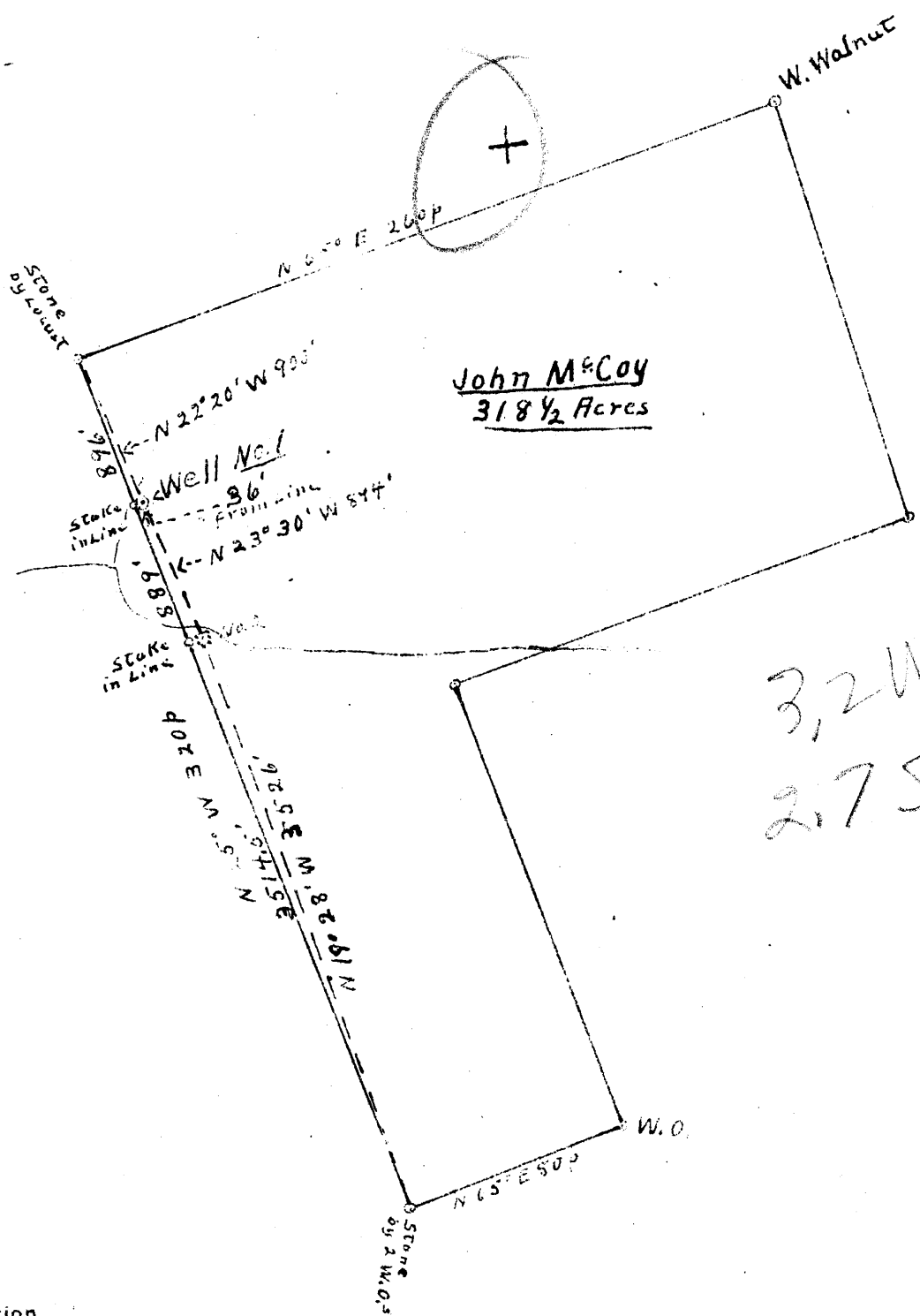


Latitude 39 35

Longitude 80 55



3,200
2,75

New Location

Drill Deeper

Abandonment

Company ESTELLA OIL CO.

Address SISTERSVILLE, W. VA.

Farm John McCoy

Tract 1 Acres 318 1/2 Lease No. _____

Well (Farm) No. 1 Serial No. _____

Elevation (Spirit Level) 979'

Quadrangle New Martinsville

County Tyler District Lincoln

Engineer Howard L. Riggs

Engineer's Registration No. _____

File No. H-E Drawing No. 861

Date 11-25-43 Scale 1" = 990'

STATE OF WEST VIRGINIA
DEPARTMENT OF MINES
OIL AND GAS DIVISION
CHARLESTON

WELL LOCATION MAP
FILE NO. Tyler-145

+ Denotes location of well on United States Topographic Maps, scale 1 to 62,500, latitude and longitude lines being represented by border lines as shown.

- Denotes one inch spaces on border line of original tract.

E. V. DYE (JOHN McCOY-plat) NO. 1 WELL.

145

Lincoln District, Tyler County, W. Va.
 By Estelle (Estella--plat) Oil Co., Sistersville, W. Va.
 Drilled under permit Tyl-~~45~~; New Martinsville Quadrangle. (Deepening).
 On 305 acres, on Pursley Creek. 145
 Elevation, 979' L.
 Surface and minerals owned by E. V. Dye, Sistersville, W. Va.
 Drilling commenced Nov. 1944; completed June 8, 1945.
 Well was not shot.
 Open flow, tested by Hope Gas Co.....?
 Volume, 180,000 cu. ft.
 Rock pressure, 190 lbs.
 Oil, small showing oil, not enough to measure.
 Water, 1375'.
 10" casing, 100'; 8 $\frac{1}{4}$ " , 910'; 6 $\frac{5}{8}$ " , 1000'; 5 $\frac{3}{16}$ " , 1421'; 2" tubing, 1792';
 all left in.
 Bottom hole packer.
 No coal was encountered.
 Gas well. Record from Smith Sept. 10, 1945.
 No record of original drilling. Drilled by Berkley Oil Co. in 1920,
 and drilled deeper by Estelle Oil Co.

DRILLED DEEPER:		Top.	Bottom.
Cow Run Sand (small oil, 934')		931	- 951
Second Cow Run Sand		1100	- 1130
1st Salt Sand		1160	- 1215
2nd Salt Sand		1320	- 1410
Sandy slate		1410	- 1550
Maxton Sand		1550	- 1620
Hard slate		1620	- 1665
Big Lime		1690	- 1740
Lime sand (gas, 1744-1754')		1740	- 1758
Lime (small oil showing, 1766', small gas and little water)		1758	- 1768?
Keener Sand		1786?	- 1792
Total depth			1792

1792
 931

 861

WEST VIRGINIA DEPARTMENT OF MINES
OIL & GAS DIVISION
W E L L R E C O R D

Permit No. Tyl 145				
New Martinsville Quad.				Gas Well CASING & TUBING
Company	Estelle Oil Company			
Address	Sistersville, W.Va.	10	100	100
Farm	E.V. Dye (was McCoy) A 305	8 1/2	910	910
Location	Pursley Creek	6 5/8	1000	1000
Well No	1 Elev. 979	5 3/16	1421	1421
District	Lincoln Tyler County	2 tub.		1792
Surface	E.V. Dye			
Mineral	E.V. Dye, Sistersville, W.Va.			Bottom Hole Packer
Commenced	Nov. 1944			
Completed	June 8, 1945			No coal
Not shot				
Open flow	Tested by Hope Gas Co.			
Volume	180 MCF			
Rock Pressure	190 lbs. -- hrs.			
Oil	Small showing oil, not enough to measure			
Water	1375			

DRILLED DEEPER

No record Drilled by Berkley Oil Co. 1920; and drilled deeper by Estelle Oil Co. 1944-45

✓ Cow Run	931	951	934- small oil
✓ Sec. Cow Run	1100	1130	
✓ 1st Salt	1160	1215	
✓ 2nd Salt	1320	1410	
✓ Sandy Slate	1410	1550	
✓ Maxon	1550	1620	
✓ Hard Slate	1620	1665	
✓ Big Lime	1690	1740	
✓ Lime Sand Keener	1740	1758	Gas 1744-1754 Gas
✓ Lime	1758	1768	1766 Small oil showing, small gas
✓ Keener Sand	1786	1792	and little water

1789