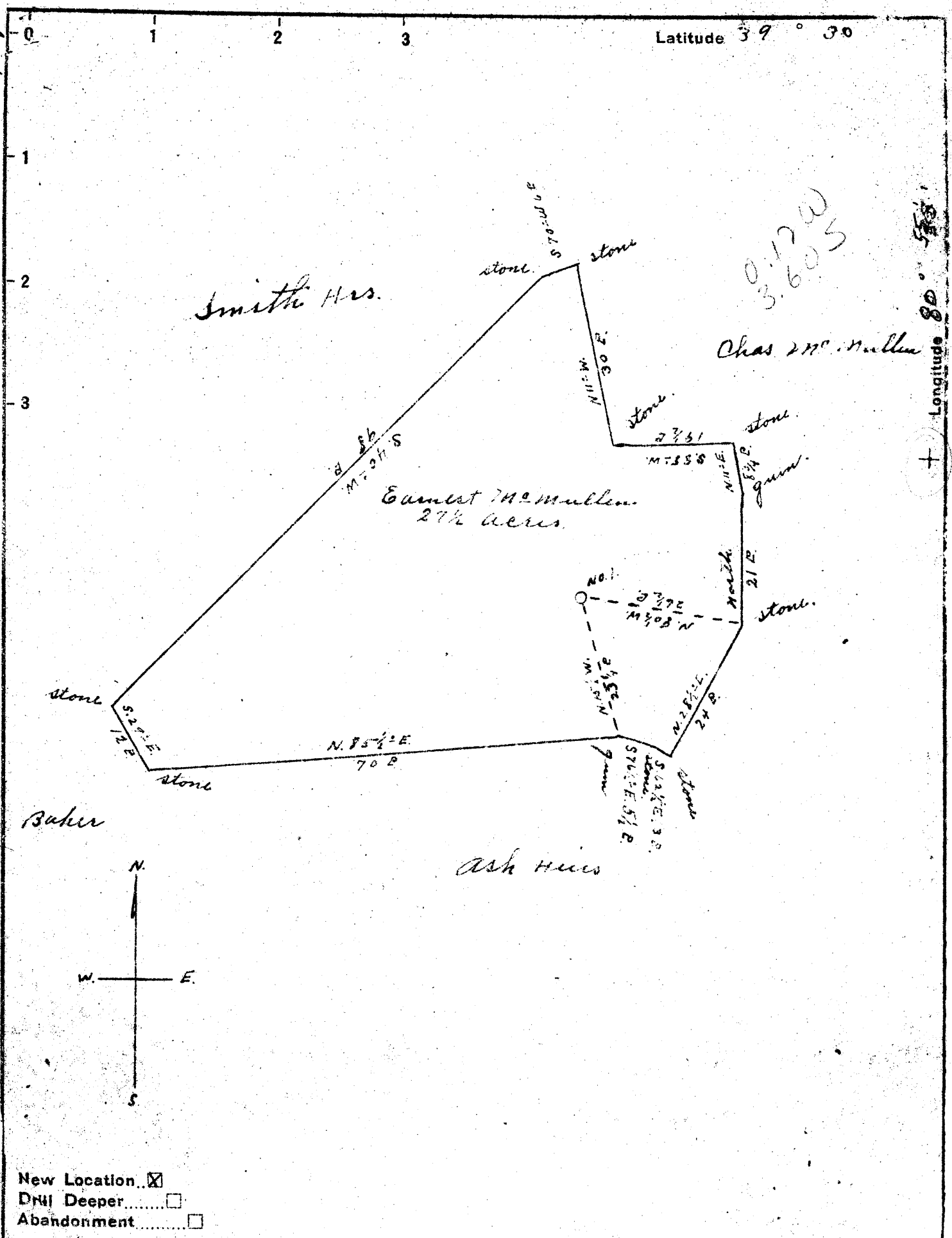


M

Latitude 39° 30'

Longitude 80° 55'



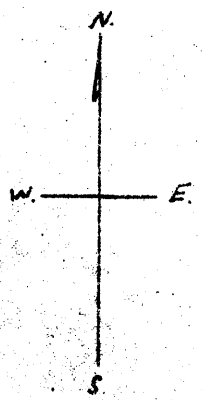
0.17 W  
3.60 S

Chas M. Mullen

Ernest M. Mullen  
27 1/2 acres

Baker

Ash Hill



- New Location
- Drill Deeper
- Abandonment

Company O. E. Hadley  
 Address Middlebourne W. Va.  
 Farm Ernest M. Mullen  
 Tract \_\_\_\_\_ Acres 27 1/2 Lease No. \_\_\_\_\_  
 Well (Farm) No. 1 Serial No. \_\_\_\_\_  
 Elevation (Spirit Level) 780'  
 Quadrangle West Union NW  
 County Tyler District Meade  
 Engineer Robert R. Anderson  
139 1/2 Triplett, Surveyor  
 Engineer's Registration No. 296  
 File No. \_\_\_\_\_ Drawing No. \_\_\_\_\_  
 Date Sept. 16 1949 Scale 1" = 20 P

STATE OF WEST VIRGINIA  
 DEPARTMENT OF MINES  
 OIL AND GAS DIVISION  
 CHARLESTON

WELL LOCATION MAP  
 FILE NO. JYL-170

+ Denotes location of well on United States Topographic Maps, scale 1 to 62,500, latitude and longitude lines being represented by border lines as shown.  
 - Denotes one inch spaces on border line of original tracing.

WEST VIRGINIA DEPARTMENT OF MINES  
OIL & GAS DIVISION  
W E L L   R E C O R D

Permit No. Tyl-170  
West Union Quad.

Company	O. E. Hadley	CASING & TUBING	
Address	Middlebourne, W. Va.		
Farm	Ernest McMullen	10	20
Location	S <sub>2</sub> ncho	8-1/4	200
District	Meade County Tyler	6-5/8	1040
Commenced	11/20/49	5/3/16	1756
Completed	Dec. 20, 1949		

Soil brown	0	10	
Sand gray	10	30	
Shale dark	30	60	
Red Rock	60	100	
White Slate	100	160	
Red Rock	160	200	
Sand White	200	220	
Slate white	220	300	
Lime white	300	549	
✓Coal black	549	550	
Red Rock	550	580	
Sand gray	580	610	
Lime	610	660	
Slate black	660	700	
Red Rock	700	1000	
Sand white	1000	1030	
Slate gray	1030	1080	
Sand gray	1080	1090	
Slate	1090	1300	
Lime	1300	1320	
Slate black	1320	1480	
Sand gray	1480	1700	
✓Lime white	1700	1835	
✓Sand white	1835	1900	show of oil 1875 water 1900

1700  
1835