

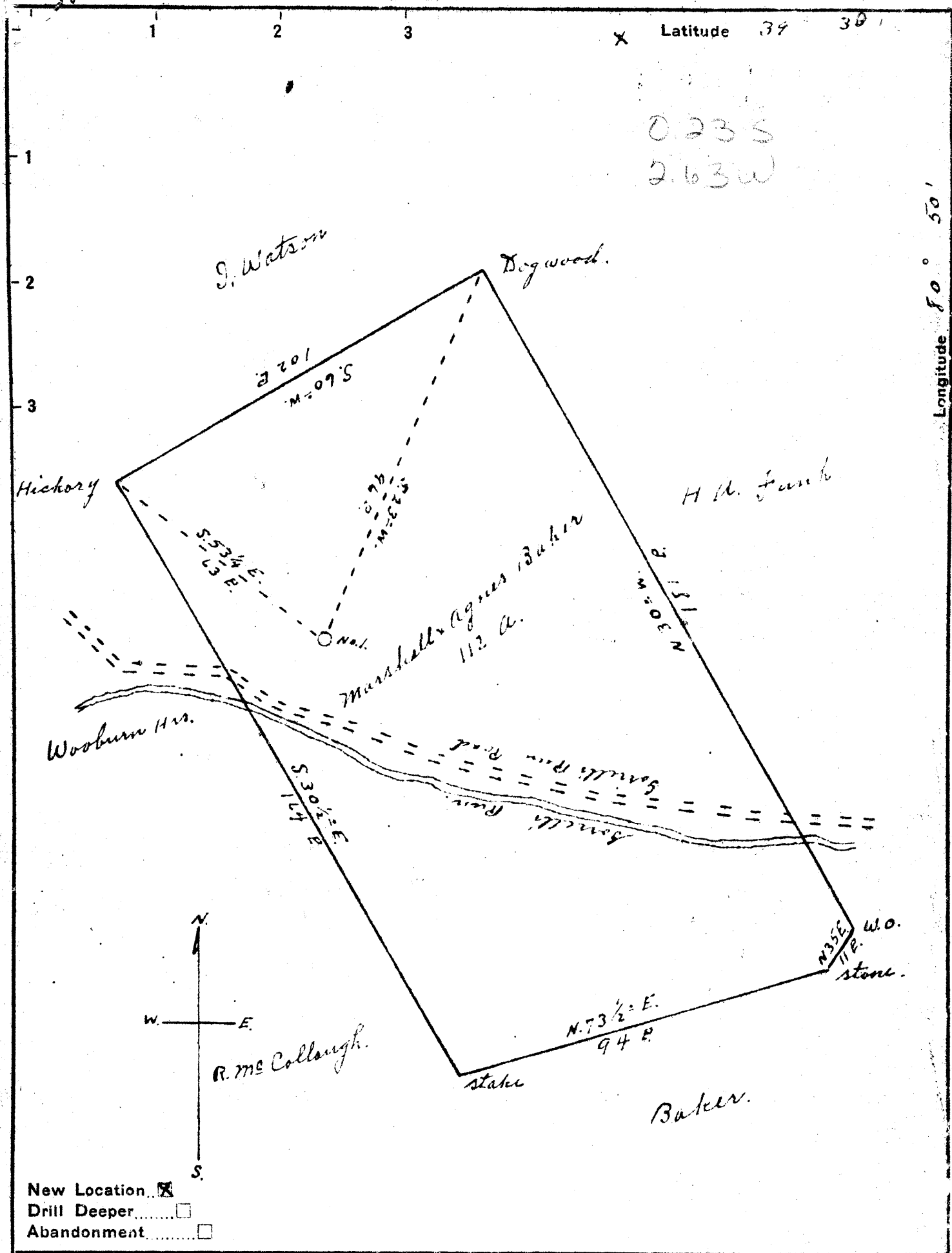
New Location   
 Drill Deeper   
 Abandonment

Company ELDON J. HAUGHT  
 Address SMITHVILLE, WVA  
 Farm Burl and Sadie Baker  
 Tract \_\_\_\_\_ Acres 112 Lease No. \_\_\_\_\_  
 Well (Farm) No. 1 Serial No. \_\_\_\_\_  
 Elevation (Spirit Level) 780'  
 Quadrangle West Union NC  
 County Tyler District Ellsworth  
 Engineer Robert J. [unclear]  
 Engineer's Registration No. 2356  
 File No. \_\_\_\_\_ Drawing No. \_\_\_\_\_  
 Date Feb 2 1951 Scale 1" = 30 P.

STATE OF WEST VIRGINIA  
 DEPARTMENT OF MINES  
 OIL AND GAS DIVISION  
 CHARLESTON

**WELL LOCATION MAP**  
 FILE NO. JYL-194R-P

+ Denotes location of well on United States Topographic Maps, scale 1 to 62,500, latitude and longitude lines being represented by border lines as shown.  
 - Denotes one inch spaces on border line of original tracing.



0.23 S  
2.63 W

X Latitude 39 30'

Longitude 80 50'

- New Location
- Drill Deeper
- Abandonment

Company Morgan Petroleum Corporation  
 Address Akron Ohio  
 Farm Marshall & Agnes Baker  
 Tract \_\_\_\_\_ Acres 112 Lease No. \_\_\_\_\_  
 Well (Farm) No. 1 Serial No. \_\_\_\_\_  
 Elevation (Spirit Level) 780'  
 Quadrangle West Union  
 County Tyler District Ellsworth  
 Engineer \_\_\_\_\_  
 By Jno. Triplett, Surveyor  
 Engineer's Registration No. \_\_\_\_\_  
 File No. \_\_\_\_\_ Drawing No. \_\_\_\_\_  
 Date Feb. 2 1951 Scale 1" = 30 P.

STATE OF WEST VIRGINIA  
 DEPARTMENT OF MINES  
 OIL AND GAS DIVISION  
 CHARLESTON

**WELL LOCATION MAP**  
 FILE NO. JYL-194

+ Denotes location of well on United States Topographic Maps, scale 1 to 62,500, latitude and longitude lines being represented by border lines as shown.  
 - Denotes one inch spaces on border line of original tracing



STATE OF WEST VIRGINIA  
DEPARTMENT OF MINES  
OIL AND GAS DIVISION

West Union

WELL RECORD

Permit No. Tyl-194

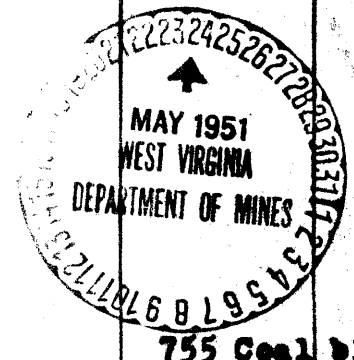
Oil or Gas Well Dry  
(KINS)

Company Morgan Petroleum Corporation  
Address 109 N. Union Street, Akron, Ohio  
J.M. Baker; Burl & Sadie  
Farm Baker Acres 2.9  
Location (waters) \_\_\_\_\_  
Well No. Burl Baker #1 Elev. 780'  
District Ellsworth County Tyler  
The surface of tract is owned in fee by J.M. Baker & Burl  
& Sadie Baker Address Middlebourne,  
Mineral rights are owned by Morgan Petroleum W.Va.  
Corperation Address Akron, Ohio  
Drilling commenced April 2, 1951  
Drilling completed April 21, 1951  
Date Shot May 7, 51 From 1674 To 1687  
With 40 qts.  
Open Flow /10ths Water in \_\_\_\_\_ Inch  
/10ths Merc. in \_\_\_\_\_ Inch  
Volume \_\_\_\_\_ Cu. Ft.  
Rock Pressure \_\_\_\_\_ lbs. \_\_\_\_\_ hrs.  
Oil \_\_\_\_\_ bbls., 1st 24 hrs.  
Fresh water \_\_\_\_\_ feet \_\_\_\_\_ feet  
Salt water \_\_\_\_\_ feet \_\_\_\_\_ feet

Casing and Tubing	Used in Drilling	Left in Well	Packers
Size			
16			Kind of Packer
18			
10	228'	Pulled	Size of
3 3/4"	1024'	"	
6 1/2"	1641'	"	Depth set
5 3/16			
8			Perf. top
2			Perf. bottom
Liners Used			Perf. top
			Perf. bottom

CASING CEMENTED \_\_\_\_\_ SIZE \_\_\_\_\_ No. Ft. \_\_\_\_\_  
COAL WAS ENCOUNTERED AT \_\_\_\_\_ FEET \_\_\_\_\_ INCHES  
\_\_\_\_\_ FEET \_\_\_\_\_ INCHES \_\_\_\_\_ FEET \_\_\_\_\_ INCHES  
\_\_\_\_\_ FEET \_\_\_\_\_ INCHES \_\_\_\_\_ FEET \_\_\_\_\_ INCHES

Formation	Color	Hard or Soft	Top	Bottom	Oil, Gas or Water	Depth Found	Remarks
Rock	Red		0	10			
Shale	blue		10	30			
Sand			30	32	Water 52'		
Shale	blue		73	80			
Rock	red		80	86			
Shale			86	105			
Rock	red		105	125			
Lime			125	190			
rock	red		190	182			
rock	pink		182	195			
Lime			195	202			
Shale	grey		202	219			
Rock	red		219	218			
Shale			218	222			
Rock	red		222	228			
Shale			228	240			
Lime			240	258			
Rock	red		258	265			
Lime			265	308			
Shale			308	312			
Sand	white		312	352			
Shale			352	360			
Lime			360	401			
Rock	red		401	407			
Sand			407	420			
Shale			420	445			
Lime			445	489			
Shale			489	490			
Lime			490	506			
Shale			506	570			
Rock	red		570	582			
Sand			582	587			
Rock	red		587	640			
Lime			640	670			
Shale			670	676			
Rock	red		676	712			
Shale			712	727			
Lime			727	755			



Formation	Color	Hard or Soft	Top	Bottom	Oil, Gas or Water	Depth Found	Remarks
Shale			755	783			
Rock	red		783	820			
Shale			820	844			
Rock	red		844	852			
Shale			852	955			
Sand			955	1002			
Shale			1002	1025			
Sand			1025	1098			
Shale			1098	1170			
Sand			1170	1220			
Shale			1220	1227			
Sand.			1227	1265			
Shale	grey		1265	1297			
Sand.			1297	1355		1609	
Shale	dark		1355	1362		735	
Sand			1362	1385		879	
Slate	black		1385	1396			
Sand			1396	1402			
Slate			1402	1440			
Sand			1440	1493			
Shale,			1493	x1502			
Sand			1502	1507			
Slate			1507	1532			
Sand			1532	1543			
Shale			1543	1573			
Little Lime			1573	1598			
Shale			1598	1609			
Big Lime			1609	1674			
Doason Sand			1674	1702			
Keener Sand			1702	1751			
S. Injun sand			1751	1790			Total depth

Well filled back to 1740 with cement and crushed stone. Lead plug at 1740'. Cement from 1740 to 1725. Crushed stone from 1725 to 1707. Pocket shot from 1707 to 1687 with 20 qts. Pay sand shot from 1687 to 1674. with 40 qt. nitro-glycerin. Shot tamped with slag and pea gravel.

Date May 23,

APPROVED Morgan Petroleum Corporation