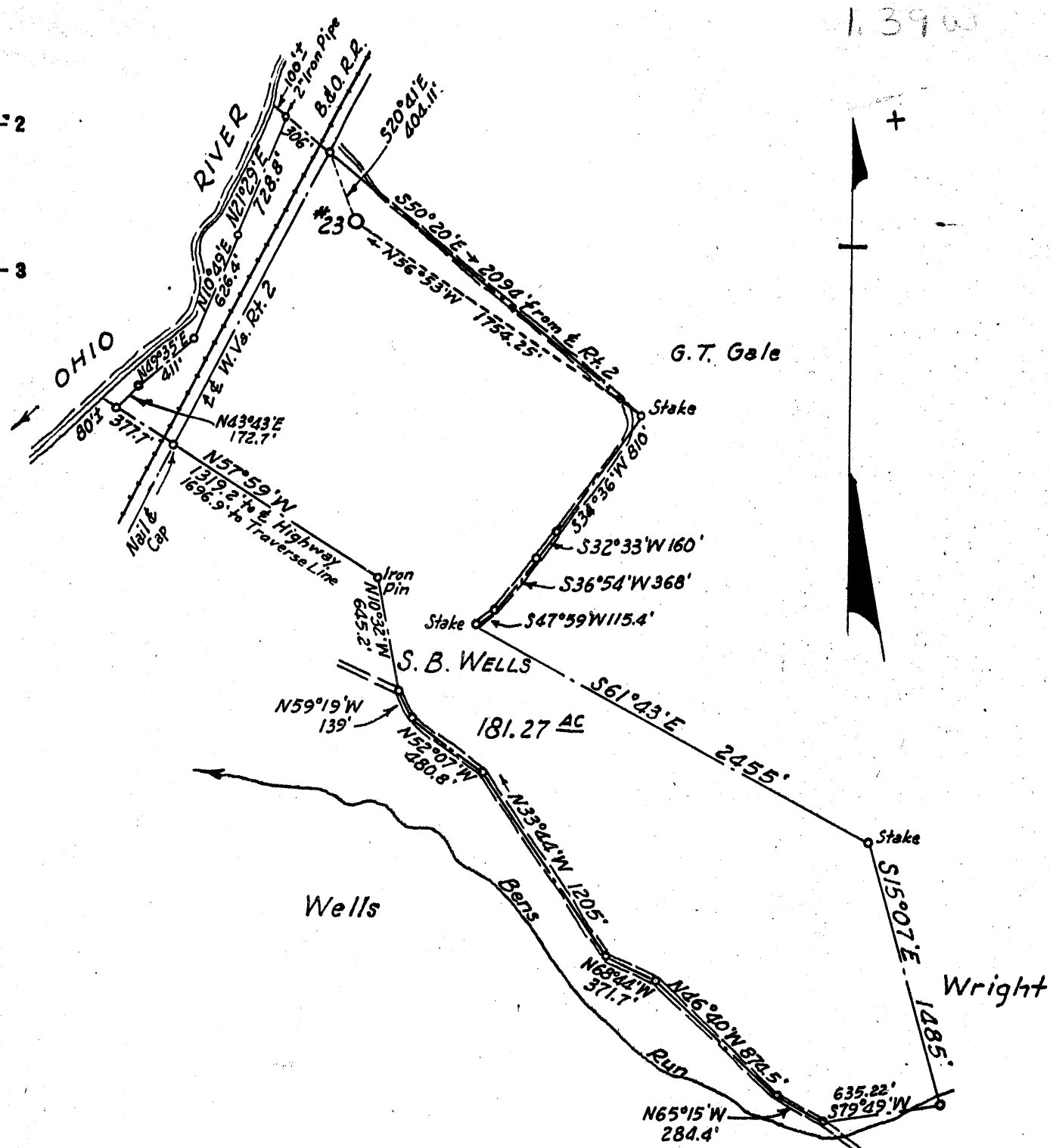


Latitude 39° 30'

Longitude 81° 05'

2.06 S  
1.39 W



New Location..   
 Drill Deeper.....   
 Abandonment.....

Company GEORGE SCHOONMAKER  
 Address ST. MARYS, W. VA.  
 Farm S. B. WELLS  
 Tract \_\_\_\_\_ Acres 181.27 Lease No. \_\_\_\_\_  
 Well (Farm) No. 23 Serial No. \_\_\_\_\_  
 Elevation (Spirit Level) 639.0  
 Quadrangle ST. MARYS  
 County TYLER District UNION  
 Engineer L. G. MERRILL  
 Engineer's Registration No. 152  
 File No. \_\_\_\_\_ Drawing No. \_\_\_\_\_  
 Date SEPT. 1, 1955 Scale 1" = 800'

STATE OF WEST VIRGINIA  
 DEPARTMENT OF MINES  
 OIL AND GAS DIVISION  
 CHARLESTON

**WELL LOCATION MAP**  
 FILE NO. JYL-245

+ Denotes location of well on United States Topographic Maps, scale 1 to 62,500, latitude and longitude lines being represented by border lines as shown.

— Denotes one inch spaces on border line of original tracing.



STATE OF WEST VIRGINIA  
DEPARTMENT OF MINES  
OIL AND GAS DIVISION

Quadrangle St. Marys

WELL RECORD

Permit No. TYL-245

Oil or Gas Well Oil

(KIND)

Company George C. Schoonmaker  
Address 702 Old National Bank Bldg. Evansville, Indiana  
Farm Leslie Martin Acres 121.27  
Location (waters) Ohio River  
Well No. 23 Elev. 639.0  
District Union County Tyler  
The surface of tract is owned in fee by Leslie Martin  
S. B. Wells Address Bens Run, W.Va.  
Mineral rights are owned by \_\_\_\_\_  
Address \_\_\_\_\_

Drilling commenced Sept. 5, 1955  
Drilling completed Sept. 19, 1955  
Date Shot 10/14/55 From 1370 To 1431  
With \_\_\_\_\_  
Open Flow \_\_\_\_\_ /10ths Water in \_\_\_\_\_ Inch  
\_\_\_\_\_ /10ths Merc. in \_\_\_\_\_ Inch  
Volume \_\_\_\_\_ Cu. Ft.  
Rock Pressure \_\_\_\_\_ lbs. \_\_\_\_\_ hrs.  
Oil \_\_\_\_\_ bbls., 1st 24 hrs.  
Fresh water \_\_\_\_\_ feet \_\_\_\_\_ feet  
Salt water \_\_\_\_\_ feet \_\_\_\_\_ feet

Casing and Tubing	Used in Drilling	Left in Well	Packers
Size			
16			Kind of Packer
13			
10			Size of
8 1/4	83	83	
6 1/2			Depth set
5 3/16		1366	
3			Perf. top
2			Perf. bottom
Liners Used			Perf. top
			Perf. bottom

CASING CEMENTED 5 1/2 SIZE 600 No. Ft. 9/20 Date \_\_\_\_\_

COAL WAS ENCOUNTERED AT No \_\_\_\_\_ FEET \_\_\_\_\_ INCHES  
\_\_\_\_\_ FEET \_\_\_\_\_ INCHES FEET \_\_\_\_\_ INCHES  
\_\_\_\_\_ FEET \_\_\_\_\_ INCHES FEET \_\_\_\_\_ INCHES

Formation	Color	Hard or Soft	Top	Bottom	Oil, Gas or Water	Depth Found	Remarks
Sand							
Shale & Lime			100	274			
Shale			274	456			
Shale & Lime			456	742			
Sand			742	762			
Shale			762	778			
Sand			778	822			
Shale & Lime			822	1024			
Broken Sand			1024	1158			
Sand			1158	1164			
Shale & Sand			1164	1212			
Sand			1212	1232			
Shale			1232	1244			
Shale & Shelly Sand			1244	1284			
Sand & Shale			1284	1430			
Total Depth				1431			

Fract. 11-26-58

