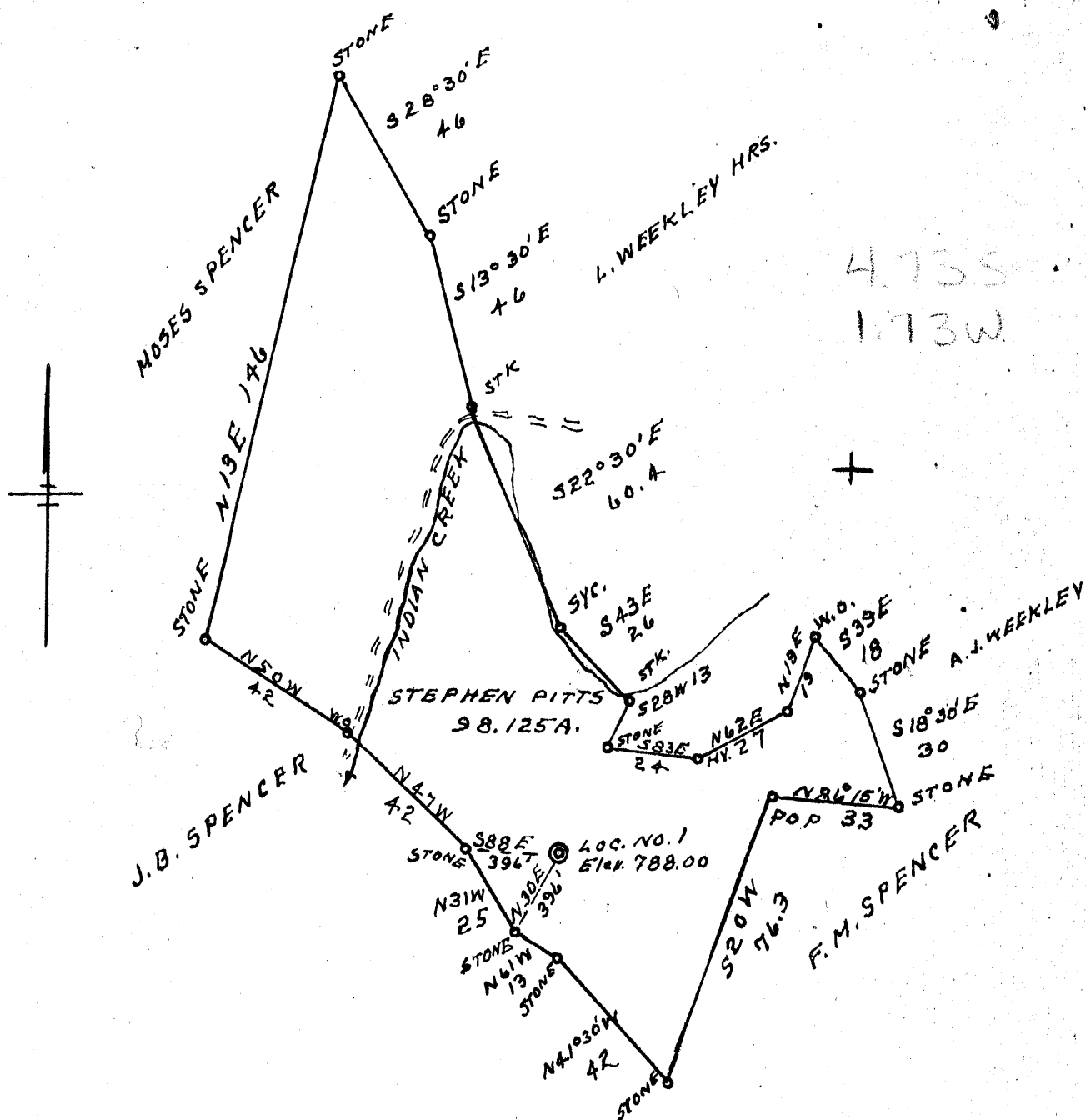


Latitude 39° 30'

Longitude 80° 45'



New Location..
 Drill Deeper.....
 Abandonment.....

Company RALPH C. HALBERT
 Address 23 MAIN ST. EVANSVILLE, IND.
 Farm STEPHEN PITTS
 Tract _____ Acres 98.125 Lease No. _____
 Well (Farm) No. 1 Serial No. _____
 Elevation (Spirit Level) 788.00
 Quadrangle WEST UNION
 County TYLER District MCELROY
 Engineer G. F. Dye
 Engineer's Registration No. 804
 File No. _____ Drawing No. _____
 Date 7-3-56 Scale 1" = 40 POLES

STATE OF WEST VIRGINIA
 DEPARTMENT OF MINES
 OIL AND GAS DIVISION
 CHARLESTON

WELL LOCATION MAP
 FILE NO. JYL-252

+ Denotes location of well on United States Topographic Maps, scale 1 to 62,500, latitude and longitude lines being represented by border lines as shown.
 - Denotes one inch spaces on border line of original tracing.



STATE OF WEST VIRGINIA
DEPARTMENT OF MINES
OIL AND GAS DIVISION 14

Quadrangle WEST UNION

WELL RECORD

Permit No. TYL-252

Oil or Gas Well DRY
(KIND)

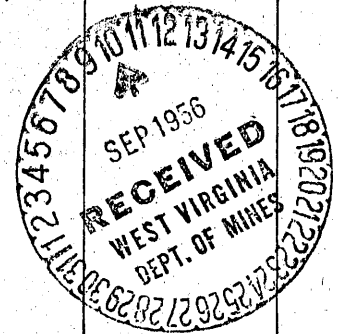
Company Ralph C. Halbert
Address 23 Main Street-Evansville, Ind.
Farm Stephen Pitt Acres 288 98
Location (waters) Indian Creek
Well No. 1 Elev. 788'
District McElroy County Tyler
The surface of tract is owned in fee by Aretta Mae Enochs
Alma, W. Va. Address _____
Mineral rights are owned by Same
Address _____
Drilling commenced July 20, 1956
Drilling completed August 28, 1956
Date Shot not From _____ To _____
With _____

Casing and Tubing	Used in Drilling	Left in Well	Packers
Size			Kind of Packer
16			
13			
10	308' 3"		Size of
8 1/4	1005'		
6 1/2	1715'		Depth set
5 3/16			
3			Perf. top
2			Perf. bottom
Liners Used			Perf. top
			Perf. bottom

Open Flow /10ths Water in _____ Inch
_____ /10ths Merc. in _____ Inch
Volume _____ Cu. Ft.
Rock Pressure _____ lbs. _____ hrs.
Oil _____ bbls., 1st 24 hrs.
Fresh water 40' feet 45' feet
Salt water _____ feet _____ feet

CASING CEMENTED	SIZE	No. Ft.	Date
COAL WAS ENCOUNTERED AT		FEET	INCHES
		FEET	INCHES
		FEET	INCHES

Formation	Color	Hard or Soft	Top	Bottom	Oil, Gas or Water	Depth Found	Remarks
Soil			0	15			
Sand	Gay	Hard	15	45	Water 45'		- hole full
Lime		Hard	45	80			
Red Rock			80	90			
Slate & Shells			90	140			
Red Rock			140	150			
Lime			150	180			
Slate & Shells			180	240			
Lime		Hard	240	265			
Red Rock			265	270			
Lime		Hard	270	280			
Slate & Shells			280	300			
Red Rock			300	315			
Slate & Shells-white			315	340			
Sand			340	350			
Slate	White		390	420			
Slate	White		420	465			
Slate & Shells		Hard	465	470			
Lime		Hard	470	500			
Slate & Shells			500	520			
Sand	White	Hard	520	575	Water 550'		
Slate			575	580			
Lime		Hard	580	595			
Red Rock			595	597			
Lime		Hard	597	610			
Slate & Shells			610	a650			
Red Rock			650	665			
Sand & Lime		Hard	665	695			
Red Rock (Big)			695	750			
Slate	White		750	790			
Shells	Black		790	810			
Lime (Sandy)		Hard	810	820			
Slate & Shells			820	855			
Sand			855	865			
Pink Rock			865	875			
Slate			875	900			



Formation	Color	Hard or Soft	Top <i>14</i>	Bottom	Gas or Water	Depth Found	Remarks
Lime			900	920			
Slate	Black		920	935			
Sand		Hard	935	955			
Slate			955	970			
Rock (P)			970	975			
BIG DUNKARD			975	1012			
Slate	White		1012	1017			
Lime			1017	1050			
Slate	Black		1050	1070			
Sand <i>White</i>	White	Hard	1070	1115			
Slate & Shells			1115	1145			
Sand <i>Grey</i>	Grey	Hard	1145	1175			
Slate & Shells - Black			1175	1190			
Slate & Shells - White-Hard			1190	1210			
Sand & Lime		Hard	1215	1225			
Black Slate & Shells			1225	1275			
Slate & Shells - Black			1275	1280			
Sand <i>Grey</i>	Grey		1280	1310			
Slate & Shells - Black			1310	1335			
Sandy Lime	Black		1335	1380			
Slate & Shells - Black & White			1380	1430			
Sand <i>Grey</i>	Grey		1430	1470			
Lime & Slate			1470	1530			
Slate	White		1530	1540			
Red Rock			1540	1630			
Slate & Shells - White			1630	1675			
White Slate - Penca Cave			1675	1700			
BIG LIME			1700	1795			
Sand (Keener) <i>Grey</i>	Grey	Hard	1795	1840			
Slate			1840	1845			
Trjun Sand			1845	1900			
Total Depth				1900			

1700
787
912

S.L.M. 1715' of 7"
Gas 1800'

Date September 10, 1956, 19

APPROVED Signed - E. C. Moore, Contractor, Owner

(Title)