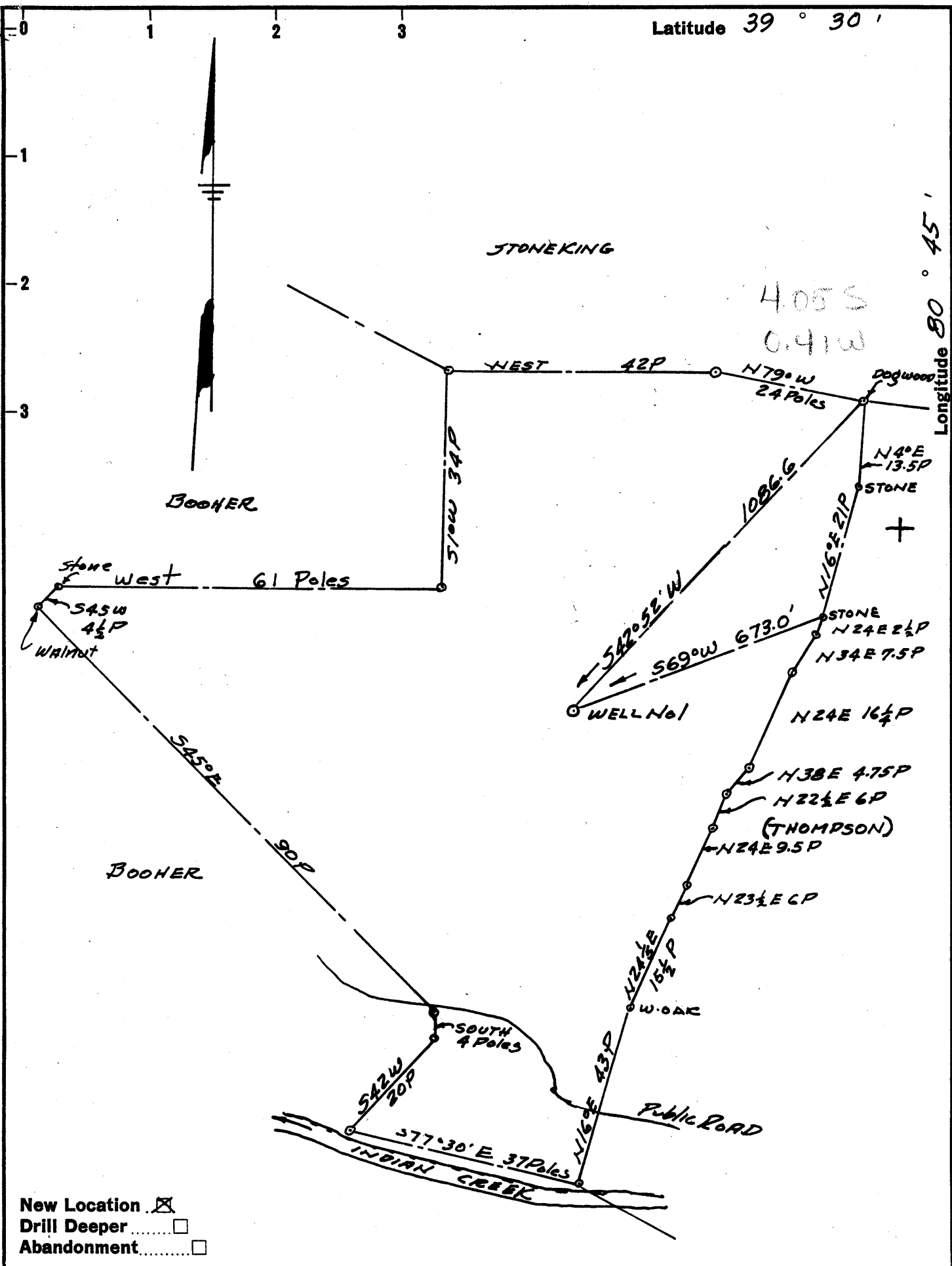


P

Latitude 39° 30'

Longitude 80° 45'



Company QUAKER STATE OIL REEG. CORP.
 Address 1222 MARKET ST. PARKERSBURG, W. VA.
 Farm NELSON FORRESTER ETAL
 Tract _____ Acres 92 Lease No. _____
 Well (Farm) No. ONE Serial No. _____
 Elevation (Spirit Level) 1032
 Quadrangle West Union - NE
 County Tyler District McElroy
 Engineer L. G. Merrill
 Engineer's Registration No. 152
 File No. _____ Drawing No. _____
 Date Oct 15, 1959 Scale 1" = 20 Poles

STATE OF WEST VIRGINIA
 DEPARTMENT OF MINES
 OIL AND GAS DIVISION
 CHARLESTON

WELL LOCATION MAP

FILE NO. 941-281

Tyler

+ Denotes location of well on United States Topographic Maps, scale 1 to 62,500, latitude and longitude lines being represented by border lines as shown.

- Denotes one inch spaces on border line of original tracing.



STATE OF WEST VIRGINIA
DEPARTMENT OF MINES
OIL AND GAS DIVISION //

Quadrangle West Union

Permit No. TYL-281

WELL RECORD

Oil or Gas Well Gas

Company Quaker State Oil Refng. Corp.
Address Box 1789, Parkersburg, W.Va.
Farm Nelson Forester Acres 92
Location (waters) Indian Creek
Well No. One Elev. 1032
District McElroy County Tyler
The surface of tract is owned in fee by Ancil Headley
Address Alma, W.Va.
Mineral rights are owned by Nelson Forester
et al Address West Union, W.Va.

Drilling commenced November 5, 1959
Drilling completed January 20, 1960
Date Shot 1/25/60 From 2740 To 2746
With 30 qts. of Glycerin
Open Flow 60/10ths Water in 3/8 Orifice Inch
/10ths Merc. in _____ Inch
Volume _____ Cu. Ft.
Rock Pressure 62 lbs. 72 hrs.
Oil None bbls., 1st 24 hrs.
WELL ACIDIZED _____
WELL FRACTURED _____

Casing and Tubing	Used in Drilling	Left in Well	Packers
Size			
16			Kind of Packer
13			<u>2"x5-3/16"</u>
10	<u>526</u>	<u>--</u>	Size of <u>Parmaco HW</u>
8 1/4	<u>1320</u>	<u>--</u>	
6 3/8	<u>1941</u>	<u>1941</u>	Depth set <u>2730</u>
5 3/16			
3			Perf. top _____
2		<u>2730</u>	Perf. bottom _____
Liners Used			Perf. top _____
			Perf. bottom _____

CASING CEMENTED	SIZE	No. Ft.	Date
COAL WAS ENCOUNTERED AT		FEET	INCHES
		FEET	INCHES
		FEET	INCHES

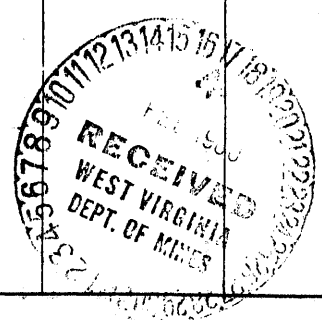
RESULT AFTER TREATMENT

ROCK PRESSURE AFTER TREATMENT

Fresh Water 134 Feet Salt Water 1111 Feet 1519

Formation	Color	Hard or Soft	Top	Bottom	Oil, Gas or Water	Depth	Remarks
Shale			Surface to	480			
Lime			480	558			
Shale			558	655			
Lime			655	711			
Shale			711	721			
Sand			721	757			
Lime			757	767			
Shale			767	946			
Lime			946	1010			
Shale			1010	1038			
Lime			1038	1083			
Sandstone			1083	1129	Oil show	1083 to 1090	
Lime			1129	1152			
Shale			1152	1201			
Lime			1201	1221			
Shale			1221	1240			
Lime			1240	1256			
Shale			1256	1320			
Sandstone			1320	1384			
Shale			1384	1410			
Lime			1410	1434			
Shale			1434	1461			
Sandstone			1461	1607			
Shale			1607	1659			
Sandstone			1659	1700			
Shale			1700	1854			
Lime			1854	1952			
Sandstone			1952	2233			
Lime			2233	2259			

1854
1032
822



(over)

Shot

Formation	Color	Hard or Soft	Top //	Bottom	Oil, Gas or Water	Depth Found	Remarks
Lime and Shale			2259	2355			
Sand			2355	2387			
Lime			2387	2436			
Sand and Shale			2436	2445			
Shale			2445	2506			
Lime			2506	2549			
Lime and Shale			2549	2726			
Reduced hole 6-5/8" to 5-3/16"			2625'				
Sand			2726	2783			
Shale and Shells			2783	3363	Gas	2741 to	2745
Sand			3363	3375			
Shale			3375	3419			
Sand			3419	3431			
Sand and Lime			3431	3493	SLM Total	Depth	

710 explon. ft.
below Gordon

Date February 16, 1960

APPROVED Quaker State Oil Refining Corp Owner

By Walter H. Hays, Engineer
(Title) 2/15/60