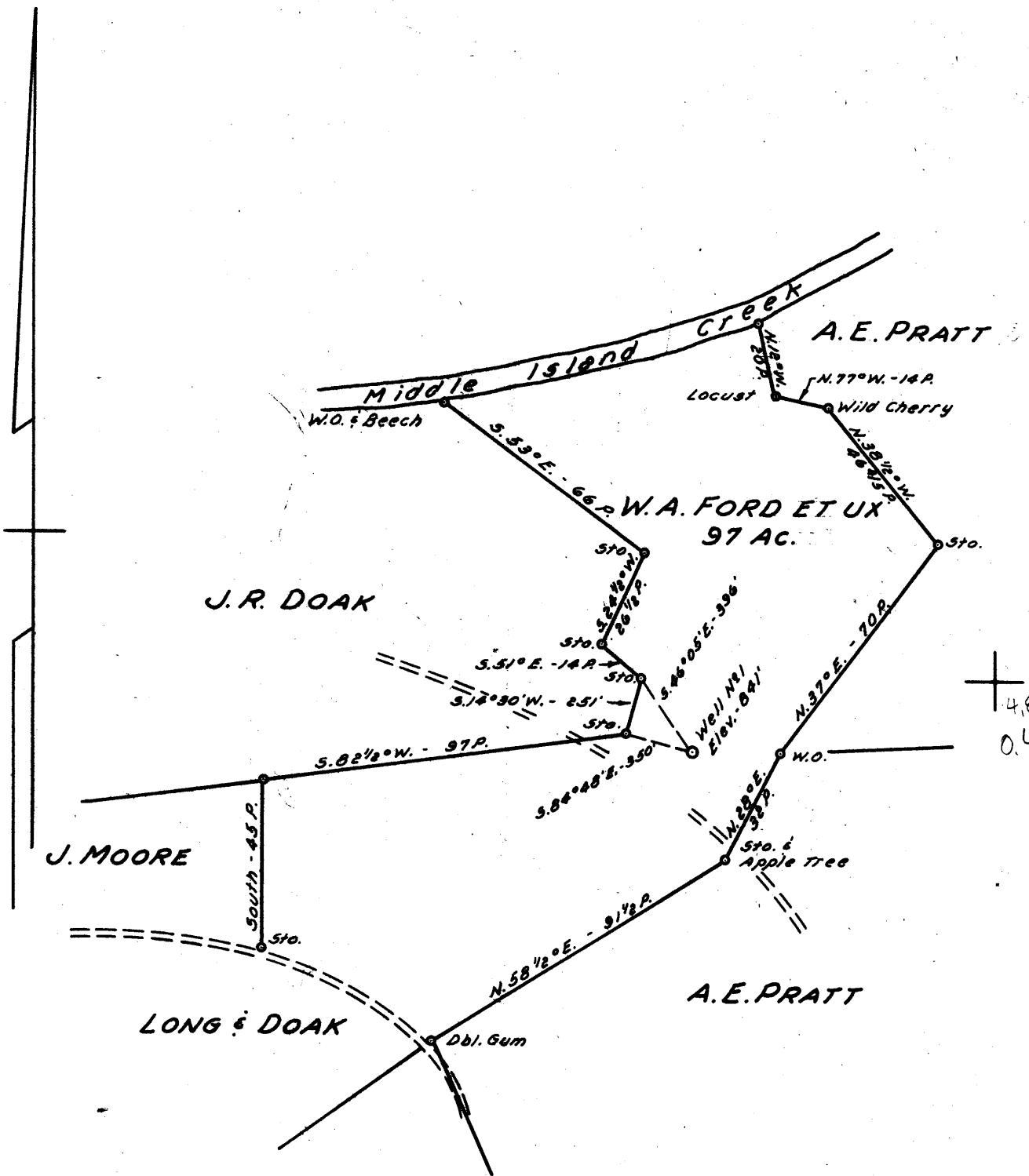


Latitude 39° 25'

Longitude 80° 50'



+ 4,825  
 0.45W

WDEP database - no info  
 on dig, plugging, or prod.  
 Kba 6/2/195

New Location   
 Drill Deeper   
 Abandonment

NOTE: Mineral Rights owned by A. Emerson Doak Hrs. % Henderson Doak  
 Cumberland, Md.

Company FLOWELL  
 Address 40 ORA PITTS  
102 JAMES ST. WEST UNION, W. VA.  
 Farm W.A. FORD ET UX  
 Tract \_\_\_\_\_ Acres 97 Lease No. \_\_\_\_\_  
 Well (Farm) No. 1 Serial No. \_\_\_\_\_  
 Elevation (Spirit Level) 841'  
 Quadrangle WEST UNION C  
 County TYLER District CENTERVILLE  
 Engineer JOHN W. HAMILTON  
 Engineer's Registration No. 2274  
 File No. \_\_\_\_\_ Drawing No. \_\_\_\_\_  
 Date MAY 21, 1960 Scale 1" = 40 POLES

STATE OF WEST VIRGINIA  
 DEPARTMENT OF MINES  
 OIL AND GAS DIVISION  
 CHARLESTON

**WELL LOCATION MAP**  
 FILE NO. tyl-292

+ Denotes location of well on United States Topographic Maps, scale 1 to 62,500, latitude and longitude lines being represented by border lines as shown.

- Denotes one inch spaces on border line of original tracing.