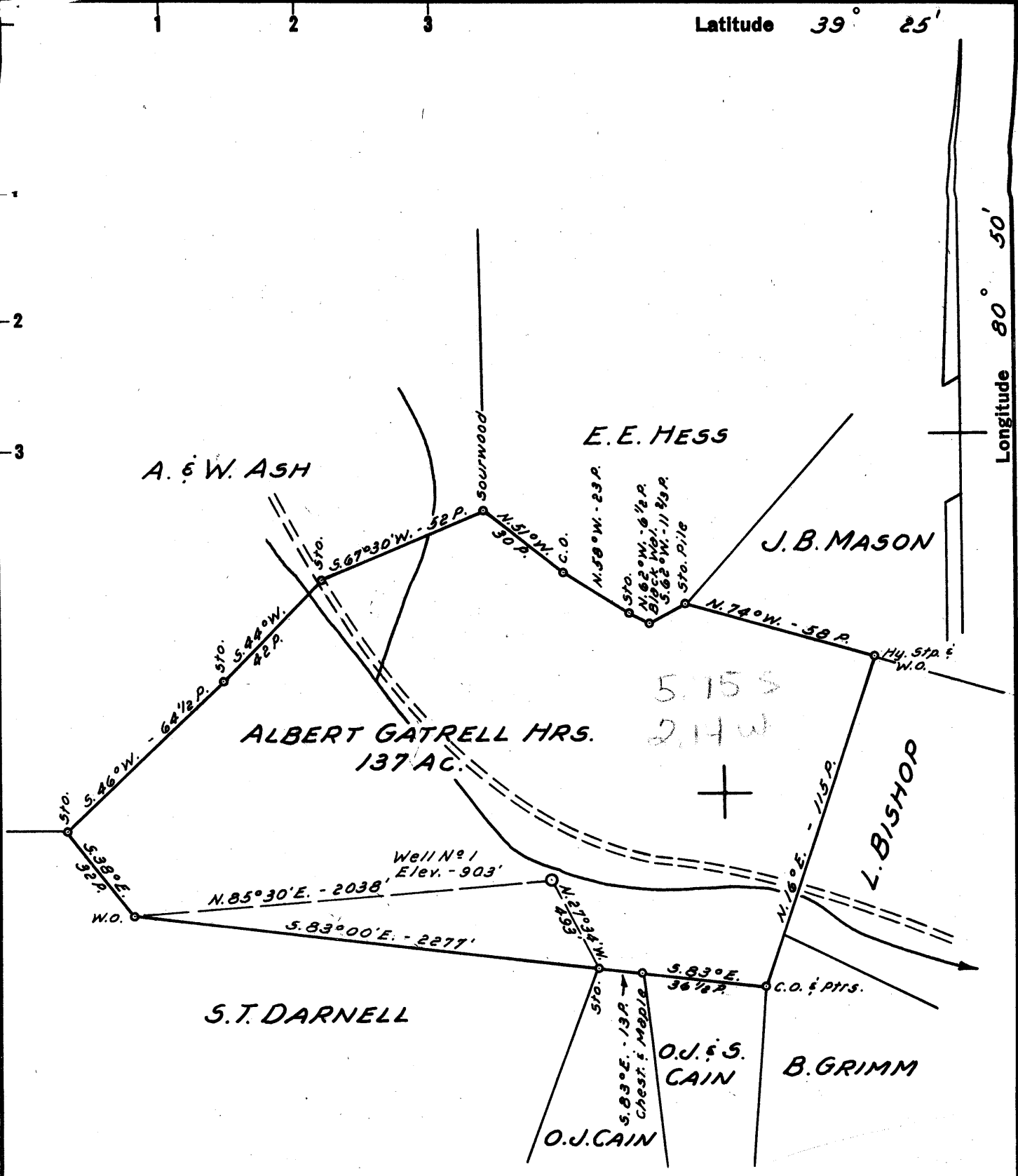


Latitude 39° 25'

Longitude 80° 50'



New Location
 Drill Deeper
 Abandonment

NOTE:
 Albert Gatrell Hrs. own in Fee.

Company FLOWELL
 Address 102 JAMES ST. WEST UNION, W.VA.
 Farm ALBERT GATRELL MRS.
 Tract _____ Acres 137 Lease No. _____
 Well (Farm) No. 1 Serial No. _____
 Elevation (Spirit Level) 903'
 Quadrangle WEST UNION SC
 County TYLER District CENTERVILLE
 Engineer JOHN W. HAMILTON
 Engineer's Registration No. 2274
 File No. _____ Drawing No. _____
 Date MAY 21, 1960 Scale 1" = 40 POLES

STATE OF WEST VIRGINIA
 DEPARTMENT OF MINES
 OIL AND GAS DIVISION
 CHARLESTON

WELL LOCATION MAP
 FILE NO. tyl. 293

+ Denotes location of well on United States Topographic Maps, scale 1 to 62,500, latitude and longitude lines being represented by border lines as shown.

- Denotes one inch spaces on border line of original tracing.



STATE OF WEST VIRGINIA
DEPARTMENT OF MINES
OIL AND GAS DIVISION 18

Quadrangle West Union

Permit No. TYL- 293

Assigned to Plantation Drilling Co.
Ft. Lauderdale, Fla.
Oil or Gas Well Gas

WELL RECORD

Company Flowell, Inc.
Address 102 James St. West Union W. Va.
670 Ore Pitts Agent
Farm Albert Gattrell Hrs. Acres 137
Location (waters) Long Run
Well No. 1 Elev. 903'
District Centerville County Tyler
The surface of tract is owned in fee by Same
Central Sta. W. Va Address
Mineral rights are owned by Same
Address

Drilling commenced Sept. 17, 1960
Drilling completed Dec. 9, 1960
Date Shot No From To
*With
Open Flow 20/10ths Water in 1 Inch
/10ths Merc. in. Inch
Volume 53,000 Cu. Ft.
Rock Pressure 210 lbs. hrs.
Oil None bbls., 1st 24 hrs.
WELL ACIDIZED
WELL FRACTURED Yes

Casing and Tubing	Used in Drilling	Left in Well	Packers
<u>3 5/8" W. Broward Blvd</u>			
<u>Ft. Lauderdale, Fla.</u>			
16			Kind of Packer <u>None</u>
13			
10			Size of
8 1/4	<u>453</u>		<u>100</u>
6 3/4	<u>1000</u>	<u>None</u>	Depth set
5 3/16	<u>1705</u>	<u>1705</u>	
3			Perf. top
2			Perf. bottom
Liners Used	<u>None</u>		Perf. top
			Perf. bottom

CASING CEMENTED 5/3-16 SIZE 100 feet No. Ft. Date

COAL WAS ENCOUNTERED AT 525 FEET 1ft INCHES
FEET INCHES FEET INCHES
FEET INCHES FEET INCHES

RESULT AFTER TREATMENT 136,000

ROCK PRESSURE AFTER TREATMENT 210 - 24 hours

Fresh Water 30 & 410 Feet Salt Water 1300 Feet

Formation	Color	Hard or Soft	Top	Bottom	Oil, Gas or Water	Depth	Remarks
Conductor							
Surface				17			
Sand		Soft	17	50	Water	30	
Slate	White	Soft	50	100			
Shale	Red	Soft	100	130			
Slate	White	Soft	130	150			
Shell		Hard	150	160			
Slate	White	Soft	160	178			
Shale	Red	Soft	178	200			
Sand		Hard	200	210			
Shale	Red	Soft	210	235			
Sand		Hard	235	245			
Clay	Grey	Soft	245	255			
Slate	White	Soft	255	260			
Sand		Hard	260	285			
Shale	Red	Soft	285	307			
Slate	White	Soft	307	340			
Shale	Red	Soft	340	365			
Sand		Hard	365	392			
Slate	White	Soft	392	410			
Sand		Hard	410	420	Water	410	Hole Full
Slate	White	Soft	420	453			
Shale	Red	Soft	453	467			
Shale	Red	Soft	467	500			
Slate	Black	Soft	500	525			
Coal			525	526			
Lime	White	Hard	526	534			
Slate	White	Soft	534	690			
Slate & Shells		Soft	690	766			
Slate	Black	Soft	766	800			

(over)

Formation	Color	Hard or Soft	Top / 8	Bottom	Oil, Gas or Water	Depth Found	Remarks
Shale	Black	Soft	800	810			
Slate	White	Soft	810	850			
✓ Sand	White	Hard	850	870			
Lime	White	Hard	870	895			
Shale	Black	Soft	895	945			
✓ Sand	Black	Hard	945	960			
Slate	Black	Soft	960	965			
✓ Sand	B.D.	Hard	965	1020			
Slate	White	Soft	1020	1185			
Sand		Hard	1185	1205			
Slate	White	Soft	1205	1260			
Sand		Hard	1260	1275			
Slate	Black	Soft	1275	1280			
Sand		Hard	1280	1290			
S. Slate	White	Soft	1290	1308	Water	1300	
✓ Sand		Hard	1308	1335			
Sand		Hard	1335	1410			
Slate	Black	Soft	1410	1458			
Sand		Hard	1458	1465			
Slate	Black	Soft	1465	1485			
Slate	White	Soft	1485	1500			
Slate	Black	Soft	1500	1518	1700 903		
Sand		Hard	1518	1539			
Slate	Black	Soft	1539	1552			
✓ Sand		Hard	1552	1610			
Slate	Black	Soft	1610	1620			
Sand		Hard	1620	1640			
Slate	Black	Soft	1640	1675			
✓ Lime	Sandy	Hard	1675	1695			
✓ P. Cave	Black	Soft	1695	1700			
✓ Lime	White	Hard	1700	1802			
✓ Sand		Hard	1802	1933			
Slate	Black	Soft	1933	1943			
					Gas	1892 to 1902	
						Total Depth	1943