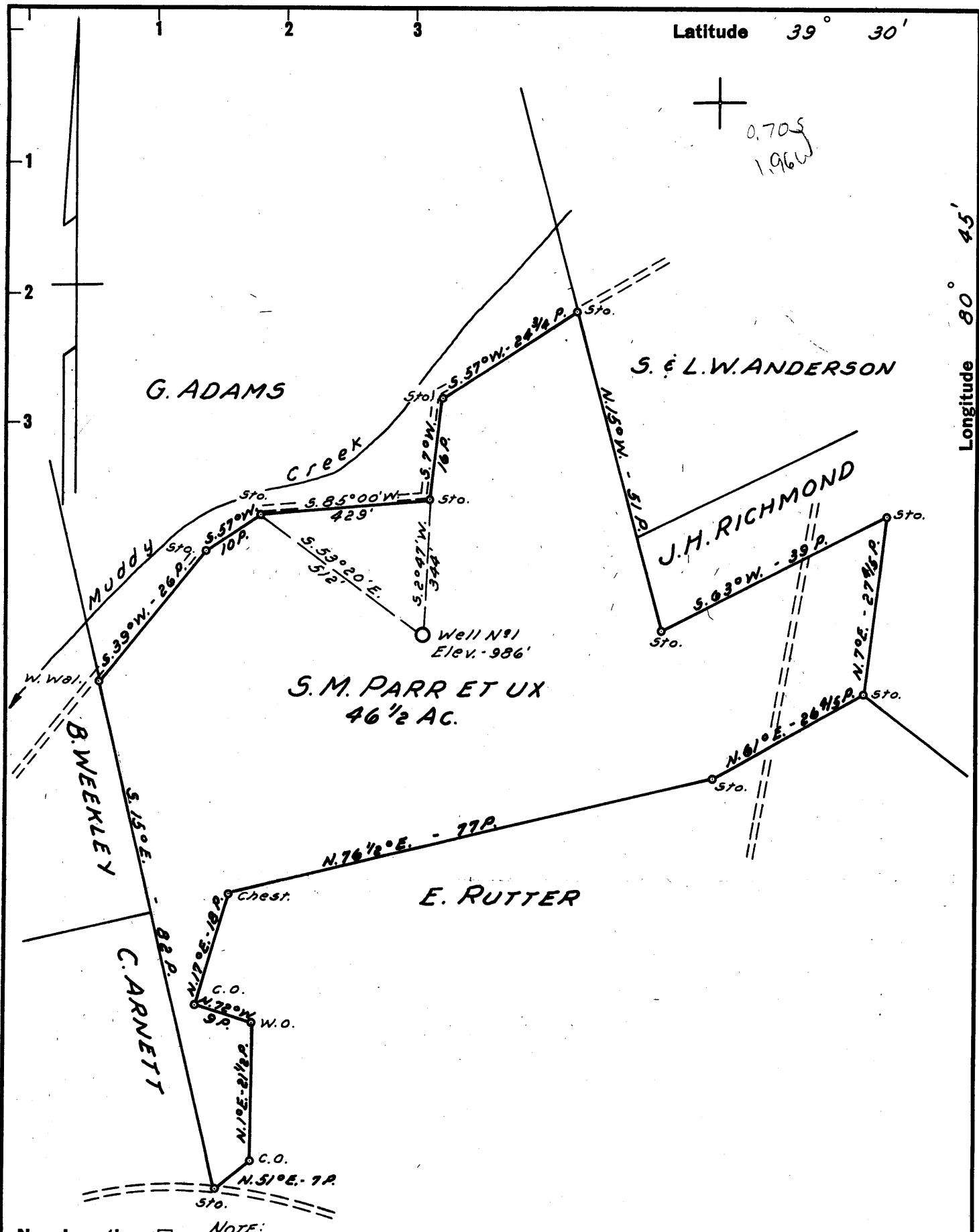


Latitude 39° 30'

Longitude 80° 45'

0.705
1.966



- New Location
- Drill Deeper
- Abandonment

NOTE:
S.M. Parr - Middlebourne, W.Va. owns 1/2 Oil & Gas Rights.
Leota Weekley Hrs. - Reader, W.Va. " " " " "

plugged - 9/14/1960

WVDP Database 6/19/95
kla

Company	GRACE E. LOWTHER
Address	MIDDLEBOURNE, W. Va.
Farm	S. M. PARR ET UX
Tract	Acres 46 1/2 Lease No.
Well (Farm) No.	1 Serial No.
Elevation (Spirit Level)	986'
Quadrangle	WEST UNION None
County	TYLER District ELLSWORTH
Engineer	JOHN W. HAMILTON
Engineer's Registration No.	2274
File No.	Drawing No.
Date	MAY 21, 1960 Scale 1" = 20 POLES

STATE OF WEST VIRGINIA
DEPARTMENT OF MINES
OIL AND GAS DIVISION
CHARLESTON

WELL LOCATION MAP
FILE NO. TYL-295

not completed - See 1960 Ann. Rept.

+ Denotes location of well on United States Topographic Maps, scale 1 to 62,500, latitude and longitude lines being represented by border lines as shown.

- Denotes one inch spaces on border line of original tracing.