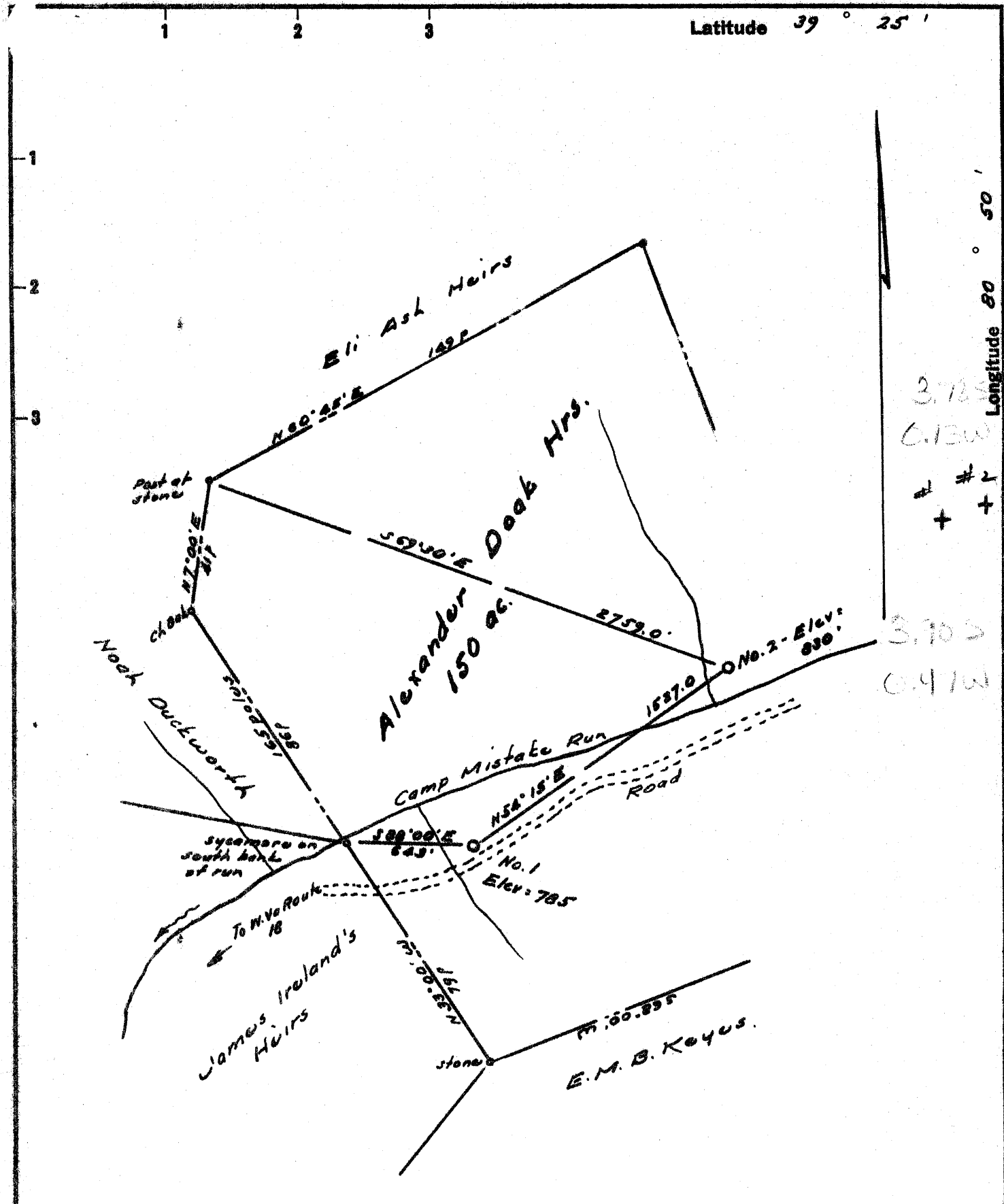


Latitude 39° 25'



3.725
6.130
#2
+
3.702
0.970

New Location
 Drill Deeper
 Abandonment

Company FERRELL L. PRIOR
 Address 702 Union Trust Bldg., Parkersburg, W. Va.
 Farm Alexander Deak Heirs
 Tract _____ Acres 150.0 Lease No. _____
 Well (Farm) No. One and Two Serial No. _____
 Elevation (Spirit Level) No. 1 = 785 No. 2 = 830
 Quadrangle West Union
 County Taylor District Centerville
 Engineer W. H. Hart
 Engineer's Registration No. 1227
 File No. _____ Drawing No. _____
 Date Oct 23, 1960 Scale 1" = 660'

STATE OF WEST VIRGINIA
 DEPARTMENT OF MINES
 OIL AND GAS DIVISION
 CHARLESTON

WELL LOCATION MAP
 FILE NO. TYL-300 #1-P 5/22/68
TYL-301 #2 never drilled DEF

+ Denotes location of well on United States Topographic Maps, scale 1 to 62,500, latitude and longitude lines being represented by border lines as shown. d base
 6/21/68
 4/20/68

- Denotes one inch spaces on border line of original tracing. acc



STATE OF WEST VIRGINIA
DEPARTMENT OF MINES
OIL AND GAS DIVISION 10

Quadrangle West Union
Permit No. TYL-302 300

WELL RECORD

Oil or Gas Well gas
(KIND)

Company Ferrell L. Prior
Address 720 Union Trust Bldg., Parkersburg, W. Va.
Farm Alexander Doak Heirs Acres 150
Location (waters) _____
Well No. One Elev. 785
District Centerville County Tyler
The surface of tract is owned in fee by _____
Address _____
Mineral rights are owned by Alexander Doak Heirs
Address _____
Drilling commenced 11/2/60
Drilling completed 12/12/60
Date Shot _____ From _____ To _____
With _____
Open Flow /10ths Water in _____ Inch
/10ths Merc. in _____ Inch
Volume 40,000 Cu. Ft.
Rock Pressure _____ lbs. _____ hrs.
Oil _____ bbls., 1st 24 hrs.
WELL ACIDIZED _____

Casing and Tubing	Used in Drilling	Left in Well	Packers
Size			Kind of Packer
16			
13	16'	16'	
10 3/4"	187		Size of
8 1/2" 5/8	790		
6 7/8" 7"	1414		Depth set
5 3/16			
4 1/2"	1836	1836	Perf. top 1700
2			Perf. bottom 1714
Liners Used			Perf. top _____
			Perf. bottom _____

CASING CEMENTED 4 1/2" SIZE 1836 No. Ft. 12/8/60 Date
34 sacks cement and 4 sacks aquagel
Lawson Cementing Company
COAL WAS ENCOUNTERED AT none FEET _____ INCHES
_____ FEET _____ INCHES _____ FEET _____ INCHES
_____ FEET _____ INCHES _____ FEET _____ INCHES

WELL FRACTURED 500 bbls. water - 240 sacks of sand

RESULT AFTER TREATMENT 750,000

ROCK PRESSURE AFTER TREATMENT 550 lbs. - 24 hours

Fresh Water none none Feet _____ Salt Water yes Feet 1185 - 1382

Formation	Color	Hard or Soft	Top	Bottom	Oil, Gas or Water	Depth	Remarks
Clay			0	20			
Sand			20	60			
Red Rock			60	70			
Shale			70	90			
Sand			90	105			
Shale			105	115			
Red Rock			115	125			
Sand			125	136			
Slate, White			136	150			
Blue Shale and sand			150	177			
Slate, White			177	184			
Sandy Lime, Blue			184	218			
Sandy Lime, Pink			218	225			
Shells, Hard			225	240			
Sandy Lime, white			240	285			
Lime, blue			285	325			
Slate & Shells, Hard			325	367			
Sandy Lime, Brown			367	385			
Shale, Pink			385	394			
Sand			394	405			
Slate, White			405	440			
Shale & Shells			440	454			
Slate, Brown			454	495			
Sand, Dark			495	506			
Shale, Gray			506	535			
Red Rock			535	543			
Lime, Brown			543	558			
Slate & Shells			558	605			
Lime, Brown			605	630			

Formation	Color	Hard or Soft	Top 13	Bottom	Oil, Gas or Water	Depth Found	Remarks
Red Rock			630	636			
Slate & Shells			636	680			
Red Rock			680	690			
Slate			690	710			
Lime			710	742			
Slate, Blue			742	770			
Shale, Blue			770	790			
Shale, Gray			790	812			
Gray Slate & Shale			812	871			
Sand, Hard			871	890			
Shale, Blue			890	945			
Sand, White			945	990			
Sandy Shale & Shells			990	1001			
Slate & Shells			1001	1010			
Sand, Hard			1010	1060			
Sand, Shaley			1060	1086			
Sand, White			1086	1152			
Sand, Hard			1152	1218	water	1185	
Slate & Shells			1218	1256			
Shale			1256	1297			
Slate, Gray			1297	1332			
Sand			1332	1410	oil	1370	
Shale, black			1410	1439	water increase-	1382	
Dark Slate & Lime Shells			1439	1472			
Shale, Dark			1472	1500			
Shale, Sandy			1500	1513			
Sand, White			1513	1537			
Red Rock & Shale			1537	1562			
Slate			1562	1567			
Lime, Brown			1567	1582			
Lime, Hard			1582	1706			
Sand, Hard			1706	1803			
Shale, Pencil Cave			1803	1820			
Sand, Hard			1820	1833			
Shale			1833	1836			
Total Depth			1836				

Date....., 19.....

APPROVED....., Owner

By.....
(Title)