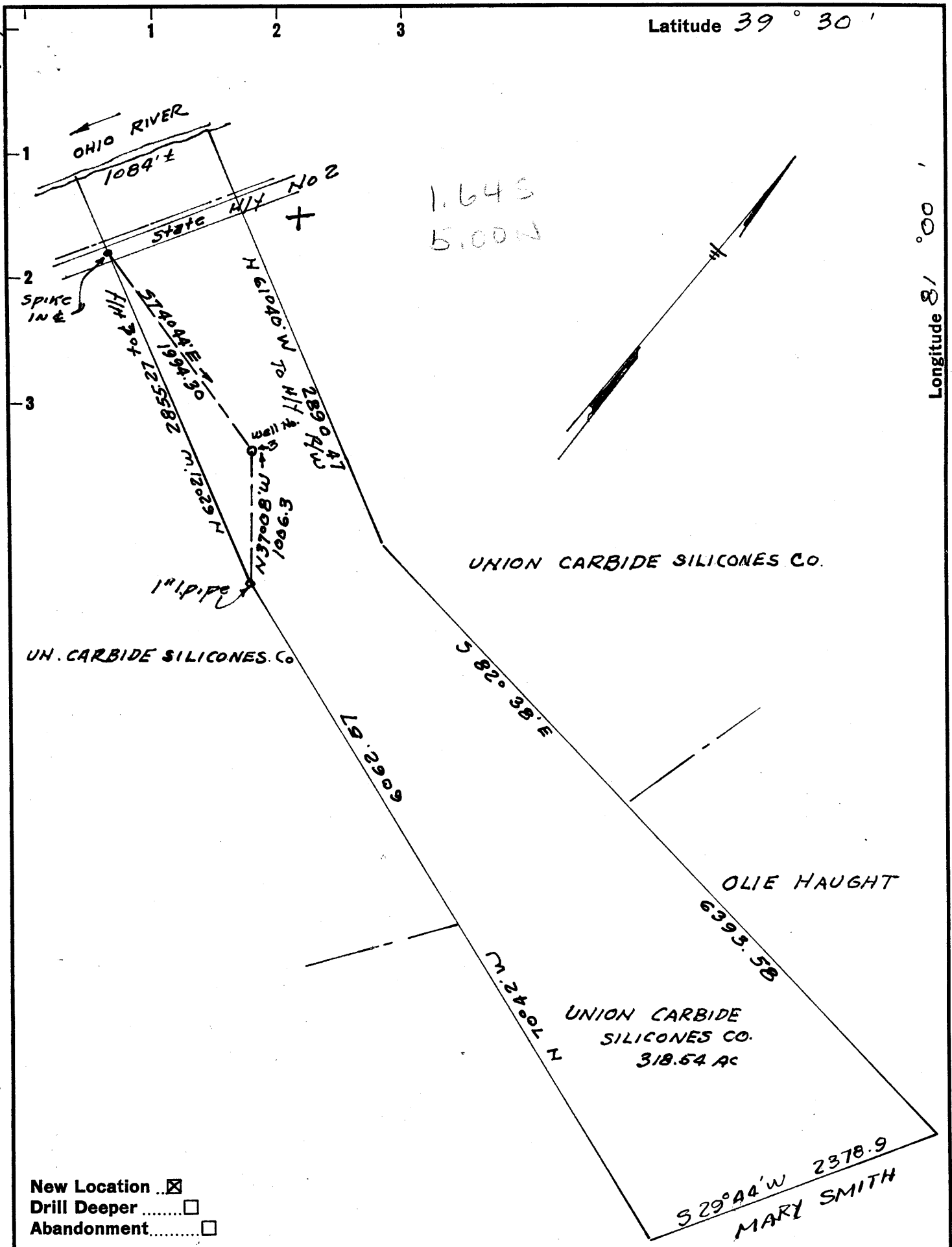


Latitude 39° 30'

Longitude 81° 00'



New Location    
 Drill Deeper    
 Abandonment

Company Union Carbide Olefins Co % Kenneth R. Gosnell   
 Address Bldg 82 Room 932 South Charleston W. Va.   
 Farm Union Carbide Silicones Co.   
 Tract \_\_\_\_\_ Acres 318.54 Lease No. \_\_\_\_\_   
 Well (Farm) No. 3 Serial No. 18-23   
 Elevation (Spirit Level) 648.0'   
 Quadrangle ST. MARY'S NE   
 County TYLER District UNION   
 Engineer Parker E. Peters   
 Engineer's Registration No. 485   
 File No. \_\_\_\_\_ Drawing No. \_\_\_\_\_   
 Date May 18, 1961 Scale 1" = 1000'

STATE OF WEST VIRGINIA   
 DEPARTMENT OF MINES   
 OIL AND GAS DIVISION   
 CHARLESTON

WELL LOCATION MAP   
 FILE NO. TYL-312

+ Denotes location of well on United States Topographic Maps, scale 1 to 62,500, latitude and longitude lines being represented by border lines as shown.

- Denotes one inch spaces on border line of original tracing.



STATE OF WEST VIRGINIA  
DEPARTMENT OF MINES  
OIL AND GAS DIVISION 12

Quadrangle St. Marys

Permit No. TYL-312

**WELL RECORD**

Oil or Gas Well? Oil and Gas  
(KIND)

Company Union Carbide Olefins Co.  
Address P. O. Box 8004, So. Charleston, W. Va.  
Union Carbide Silicones Co. Acres 318.54  
Farm (O. T. Smith Tract)  
Location (waters) Ohio River  
Well No. 3, Serial No. 18-23 Elev. 648  
District Union County Tyler  
The surface of tract is owned in fee by Union Carbide Corp. 270 Park Avenue Address New York, New York  
Mineral rights are owned by Same Address \_\_\_\_\_

Drilling commenced May 13, 1961  
Drilling completed June 8, 1961  
Date Shot \_\_\_\_\_ From \_\_\_\_\_ To \_\_\_\_\_  
With \_\_\_\_\_  
Open Flow /10ths Water in \_\_\_\_\_ Inch  
/10ths Merc. in \_\_\_\_\_ Inch  
Volume \_\_\_\_\_ Cu. Ft.  
Rock Pressure \_\_\_\_\_ lbs. \_\_\_\_\_ hrs.  
Oil \_\_\_\_\_ bbls., 1st 24 hrs.  
WELL ACIDIZED \_\_\_\_\_

Casing and Tubing	Used in Drilling	Left in Well	Packers
Size			Kind of Packer _____
16			
13			
10	48'	48'	Size of _____
8 1/4	861'	Pulled	
6 5/8	1,278'	Pulled	Depth set _____
5 3/16	1,516	1,516'	
3			Perf. top <u>Notch</u>
2			Perf. bottom <u>1,368'</u>
Liners Used			Perf. top _____
			Perf. bottom _____

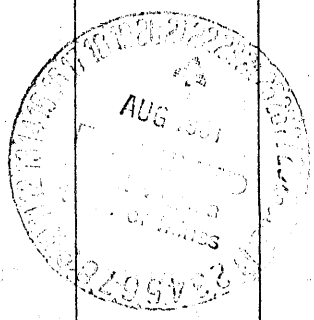
CASING CEMENTED 5-1/2" SIZE 290' No. Ft. 6-8-61 Date

COAL WAS ENCOUNTERED AT None FEET \_\_\_\_\_ INCHES  
\_\_\_\_\_ FEET \_\_\_\_\_ INCHES FEET \_\_\_\_\_ INCHES  
\_\_\_\_\_ FEET \_\_\_\_\_ INCHES FEET \_\_\_\_\_ INCHES

WELL FRACTURED June 10, 1961 - 16,000 Gallons fluid, 250 Gallons MCA, 20,000# 20-40 sand, 4,000# 10-20 sand.

RESULT AFTER TREATMENT FOF AF 5 bbls oil 25 MCF  
ROCK PRESSURE AFTER TREATMENT \_\_\_\_\_  
Fresh Water 8-47' Feet 83' Salt Water 945-955 Feet \_\_\_\_\_

Formation	Color	Hard or Soft	Top	Bottom	Oil, Gas or Water	Depth	Remarks
Soil			0	8			
Sand & Gravel			8	47	Water	8-47'	Hole Full
Slate & Shells			47	93	Water	83'	1-1/2 Bailers/ Hr.
Red Rock			93	103			
Slate & Shells			103	125			
Red Rock			125	135			
Slate & Shells			135	240			
Red Rock			240	255			
Slate & Shells			255	305			
Red Rock			305	375			
Slate & Shells			375	380			
Red Rock			380	395			
Slate & Shells			395	440			
Red Rock			440	465			
Slate & Shells			465	538			
Red Rock			538	545			
Slate & Shells			545	730			
Sand			730	764			
Shale	Black		764	769			
Slate & Shells			769	787			
Sand			787	837			
Slate & Shells			837	860			
Sand			860	865			
Slate & Shells			865	945			
Sand			945	975	Water	945-955	
Slate			975	1054			
Sand			1054	1083			
Slate			1083	1100			
Sand			1100	1192			
Slate			1192	1194			



Formation	Color	Hard or Soft	Top <i>12</i>	Bottom	Oil, Gas or Water	Depth Found	Remarks
Sand			1194	1222			
Slate			1222	1240			
Sand			1240	1245			
Slate			1245	1262			
Lime			1262	1353			
Sand			1353	1378			
Slate			1378	1392			
Sand	7		1392	1508	Oil & Gas	1400-1415	Show
Slate			1508	1520			
Sand			1520	1556			
				TD 1556			

Date August 18, 1961

APPROVED Union Carbide Olefins Co., Owner

By Kenneth R. Gosnell  
(Title)

K. R. Gosnell - District Production Engineer  
Natural Resources - Ohio - W. Va.