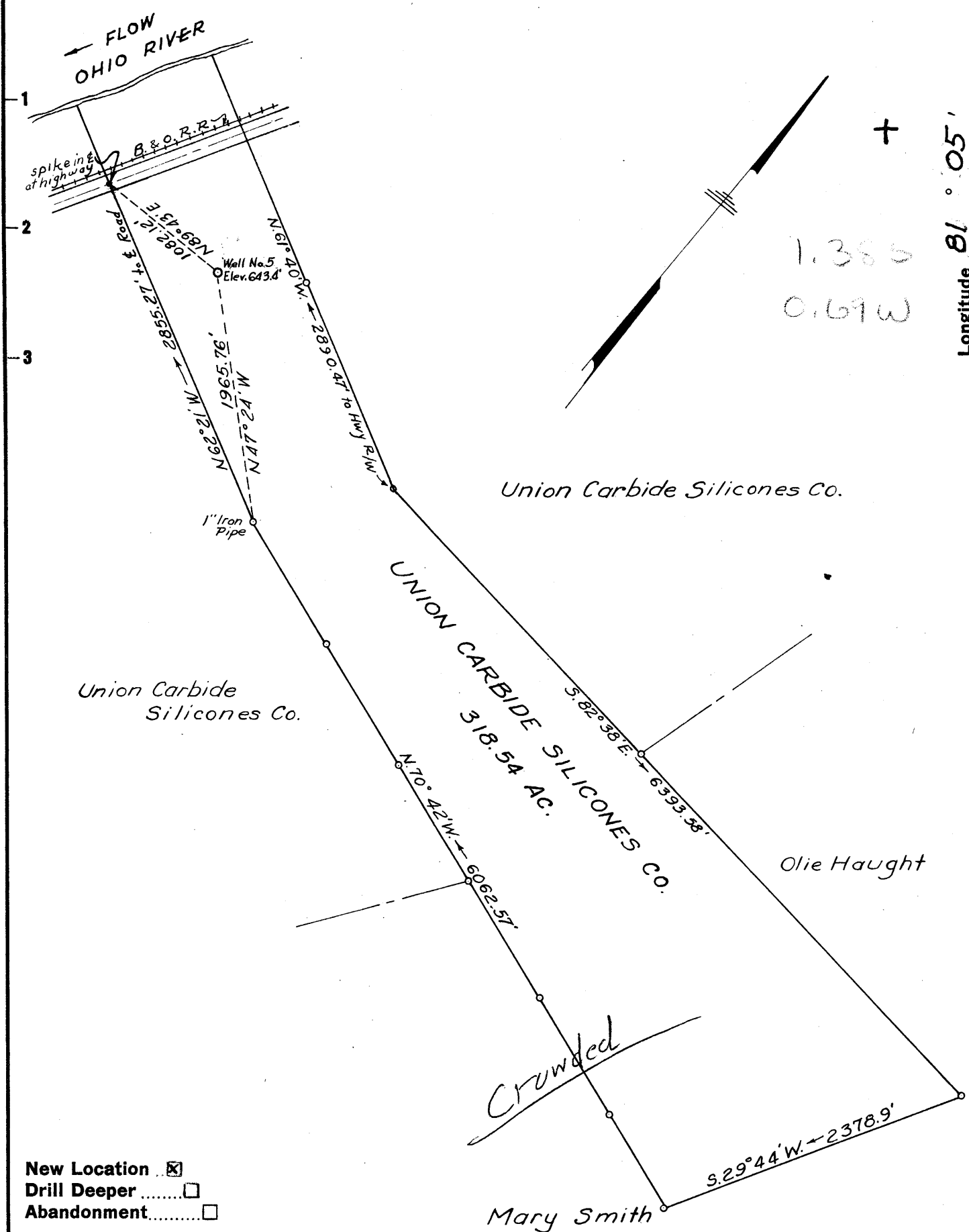


Latitude 39° 30'

Longitude 81° 05'



Company Union Carbide Olefins Co. % Kenneth R. Gosnell
 Address Bldg. 82, Room 932, So. Charleston, W.Va.
 Farm Union Carbide Silicones Co.
 Tract _____ Acres 318.54 Lease No. _____
 Well (Farm) No. 5 Serial No. 18-25
 Elevation (Spirit Level) 643.4
 Quadrangle St. Marys Nc
 County Tyler District Union
 Engineer Parker E. Peters
 Engineer's Registration No. 485
 File No. _____ Drawing No. _____
 Date MAY 27, 1961 Scale 1" = 1000'

STATE OF WEST VIRGINIA
 DEPARTMENT OF MINES
 OIL AND GAS DIVISION
 CHARLESTON

WELL LOCATION MAP
 FILE NO. TYL-314

+ Denotes location of well on United States Topographic Maps, scale 1 to 62,500, latitude and longitude lines being represented by border lines as shown.

- Denotes one inch spaces on border line of original tracing.



STATE OF WEST VIRGINIA
DEPARTMENT OF MINES
OIL AND GAS DIVISION 22

Quadrangle St. Marys

Permit No. TYL-314

WELL RECORD

Oil or Gas Well Gas 560
(KIND)

Company Union Carbide Olefins Co.
Address Bldg. 82, Room 932, So. Charleston, W. Va.
Farm Union Carbide Silicones Co. Acres 318.54

Location (waters) _____
Well No. 5 Elev. 643.4
District Union County Tyler

The surface of tract is owned in fee by Union Carbide Silicones
Address _____

Mineral rights are owned by Union Carbide Silicones
Address _____

Drilling commenced July 11, 1961
Drilling completed July 26, 1961

Date Shot _____ From _____ To _____
With _____

Open Flow /10ths Water in _____ Inch
/10ths Merc. in _____ Inch

Volume 28,000 Cu. Ft.

Rock Pressure 50 lbs. 1 hrs.

Oil Note _____ bbls., 1st 24 hrs.

WELL ACIDIZED: Not

WELL FRACTURED Not

RESULT AFTER TREATMENT Not

ROCK PRESSURE AFTER TREATMENT _____

Fresh Water 95 Feet

Salt Water _____ Feet

Casing and Tubing	Used in Drilling	Left in Well	Packers
Size			
16			Kind of Packer _____
13			Sidewall _____
10			Size of _____
8 1/4	95'	95'	
6 3/8	278'	278'	Depth set <u>450'</u>
5 3/16			
3		450'	Perf. top _____
2			Perf. bottom _____
Liners Used			Perf. top _____
			Perf. bottom _____

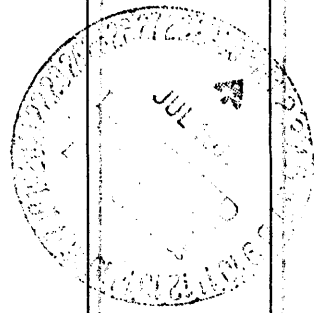
CASING CEMENTED _____ SIZE _____ No. Ft. _____ Date _____

COAL WAS ENCOUNTERED AT _____ FEET _____ INCHES

_____ FEET _____ INCHES FEET _____ INCHES

_____ FEET _____ INCHES FEET _____ INCHES

Formation	Color	Hard or Soft	Top	Bottom	Oil, Gas or Water	Depth	Remarks
Blue Shale			80	82			
Red Rock			82	95			
Lime		hard	95	115			
Slate & Shells			115	130			
Black Lime			130	143			
Black Shale			143	150			
Blue Shale			150	162			
Red Rock			162	171			
Blue Shale			171	183			
Lime Shell		hard	183	185			
Blue Shale			185	215			
Black Shale			215	220			
Lime Shell			220	229			
Red Rock			229	239			
Grey Lime			239	250			
Red Rock			260	268			
Lime Shell			268	272			
Red Rock			272	276			
Lime Shell			276	280			
Red Rock			280	354			
Blue Lime Shell			354	357			
Red Rock			357	381			
Blue Shale			381	412			
Lime Shell		grey	412	416			
Red Rock			416	447			
Gritty Shale		blue	447	456			
Blue Shale			456	487			
Red Rock			487	493			
Blue Shale			493	500			



Gas 452

Formation	Color	Hard or Soft	Top <i>22</i>	Bottom	Oil, Gas or Water	Depth Found	Remarks
Black Shale			500	515			
Red Rock			515	525			
Blue Shale			525	553			
Lime Shell			553	556			
Blue Sand		hard	556	561			
Blue Shale			561	580			
Black Shale			580	600			
TOTAL DEPTH				600			
Plugged back to				460			

Date July 28, 1961

APPROVED UNION CARBIDE OLEFINS COMPANY, Owner

By H. McGay, Consulting Geologist
(Title)