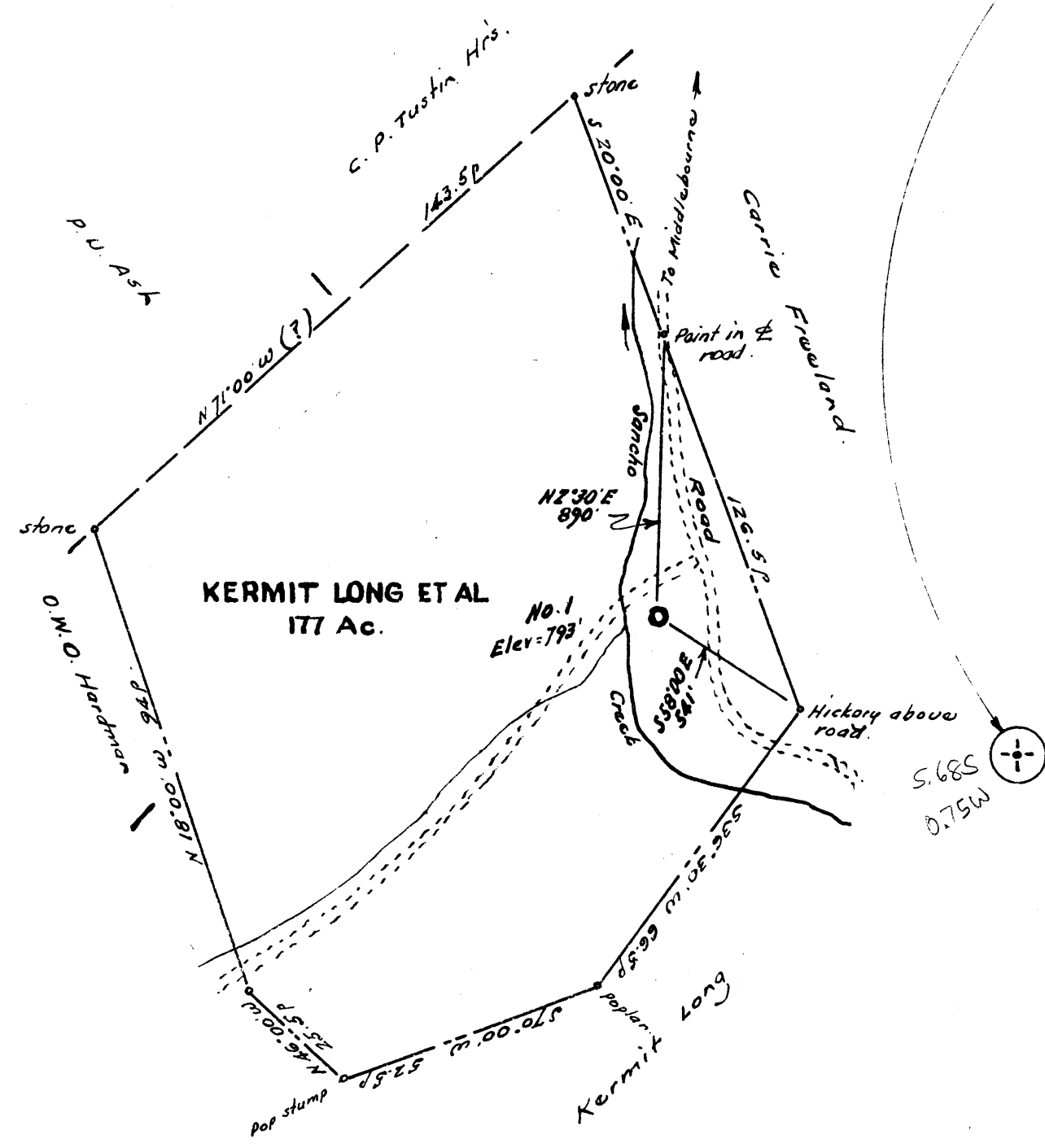


Latitude 39° 30'

Longitude 80° 55'



KERMIT LONG ET AL
177 Ac.

No. 1
Elev: 793'

S.68S
0.75W

NOTE:- Shown is a 138 acre part of a 177 ac. lease.
Surface is owned by Kermit Long,
Rural Route, Middlebourne, W. Va.
No coal.

never drilled WVD&P dbase

- New Location
- Drill Deeper
- Abandonment

Company PAR - W W. SYNDICATE, INC.
 Address 818 Unadilla St., Shreveport, La.
 Farm Kermit H. Long, et al
 Tract _____ Acres 177 Lease No. _____
 Well (Farm) No. One Serial No. _____
 Elevation (Spirit Level) 793
 Quadrangle West Union NW
 County Tyler District Meado
 Engineer [Signature]
 Engineer's Registration No. 1227
 File No. _____ Drawing No. _____
 Date July 1961 Scale 1" = 30p.

la 6/21/65
 STATE OF WEST VIRGINIA
 DEPARTMENT OF MINES
 OIL AND GAS DIVISION
 CHARLESTON
conc 12/14/1961
WELL LOCATION MAP
 FILE NO. TYL - 318

- + Denotes location of well on United States Topographic Maps, scale 1 to 62,500, latitude and longitude lines being represented by border lines as shown.
- Denotes one inch spaces on border line of original tracing.