

Company	JACK E. & DOROTHEA WEBBER
Address	WEST UNION, W.V. 2645 6
Farm	C. M. Hamilton
Tract	2 Acres 83 Lease No. _____
Well (Farm) No.	2 Serial No. _____
Elevation (Spirit Level)	887
Quadrangle	West Union/MIDDLE BOURNE
County	Tyler District Meade
Engineer	Parker E. Peters
Engineer's Registration No.	485
File No.	_____ Drawing No. _____
Date	Feb. 5, 1962 Scale 1" = 30 P.

STATE OF WEST VIRGINIA  
DEPARTMENT OF MINES  
OIL AND GAS DIVISION  
CHARLESTON

WELL LOCATION MAP

FILE NO. *Tyler-333-P*

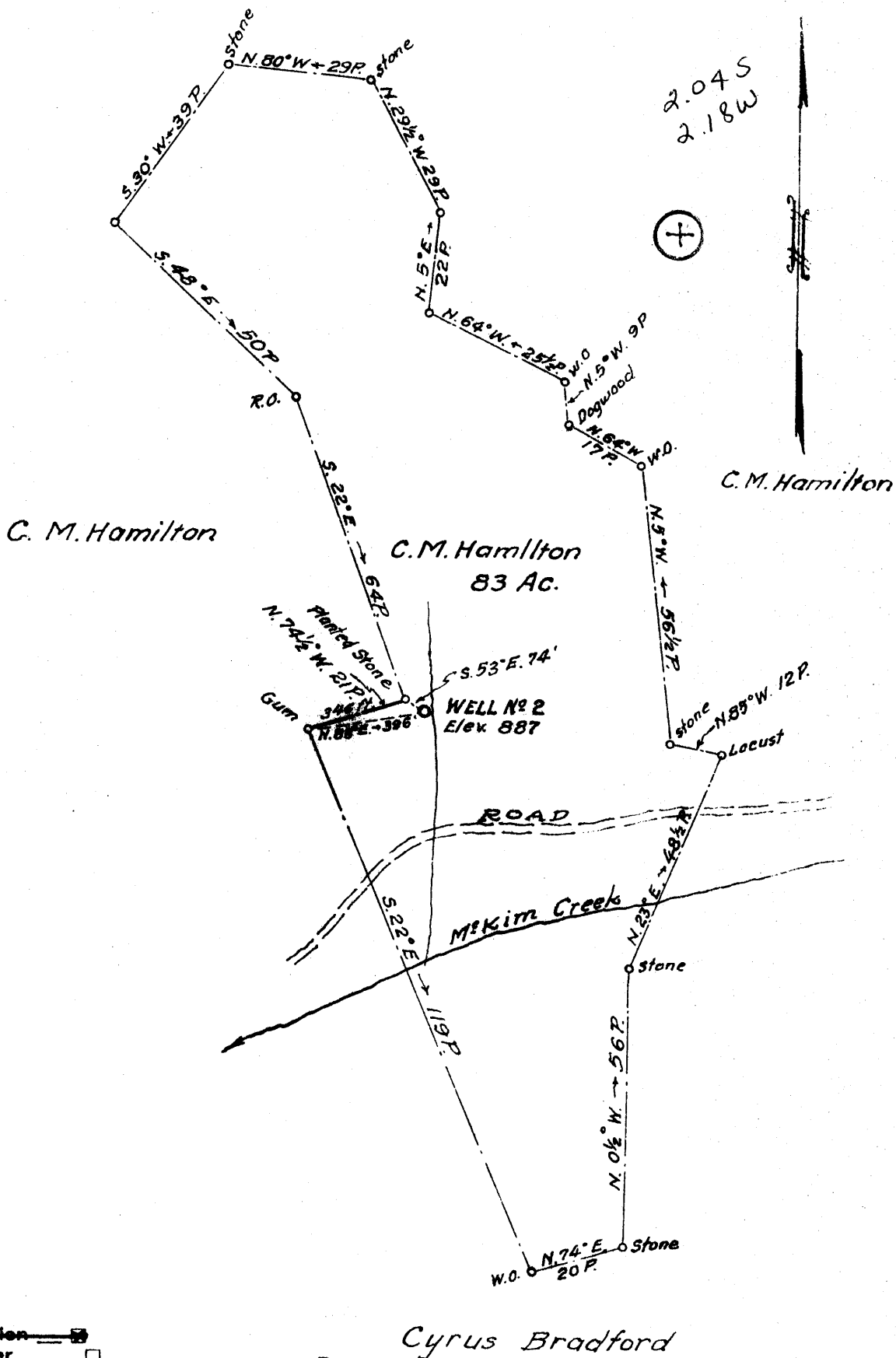
*7.5 Plugging Permit Canale*

+ Denotes location of well on United States Topographic Maps, scale 1 to 62,500, latitude and longitude lines being represented by border lines as shown.

3 1987

— Denotes one inch spaces on border line of original tracing.

47-095



New Location   
 Drill Deeper   
 Abandonment  ISSUED 7-14-75

Company JACK E & DOROTHEA WEBBER  
 Address WEST UNION, W.V. 26456  
 Farm C. M. Hamilton  
 Tract 2 Acres 83 Lease No. \_\_\_\_\_  
 Well (Farm) No. 2 Serial No. \_\_\_\_\_  
 Elevation (Spirit Level) 887  
 Quadrangle West Union WC  
 County Tyler District Meade  
 Engineer Parker E. Pitre  
 Engineer's Registration No. 485  
 File No. \_\_\_\_\_ Drawing No. \_\_\_\_\_  
 Date Feb 5, 1962 Scale 1" = 30 P.

STATE OF WEST VIRGINIA  
 DEPARTMENT OF MINES  
 OIL AND GAS DIVISION  
 CHARLESTON  
**WELL LOCATION MAP**  
 FILE NO. TYL-333-P

+ Denotes location of well on United States Topographic Maps, scale 1 to 62,500, latitude and longitude lines being represented by border lines as shown.

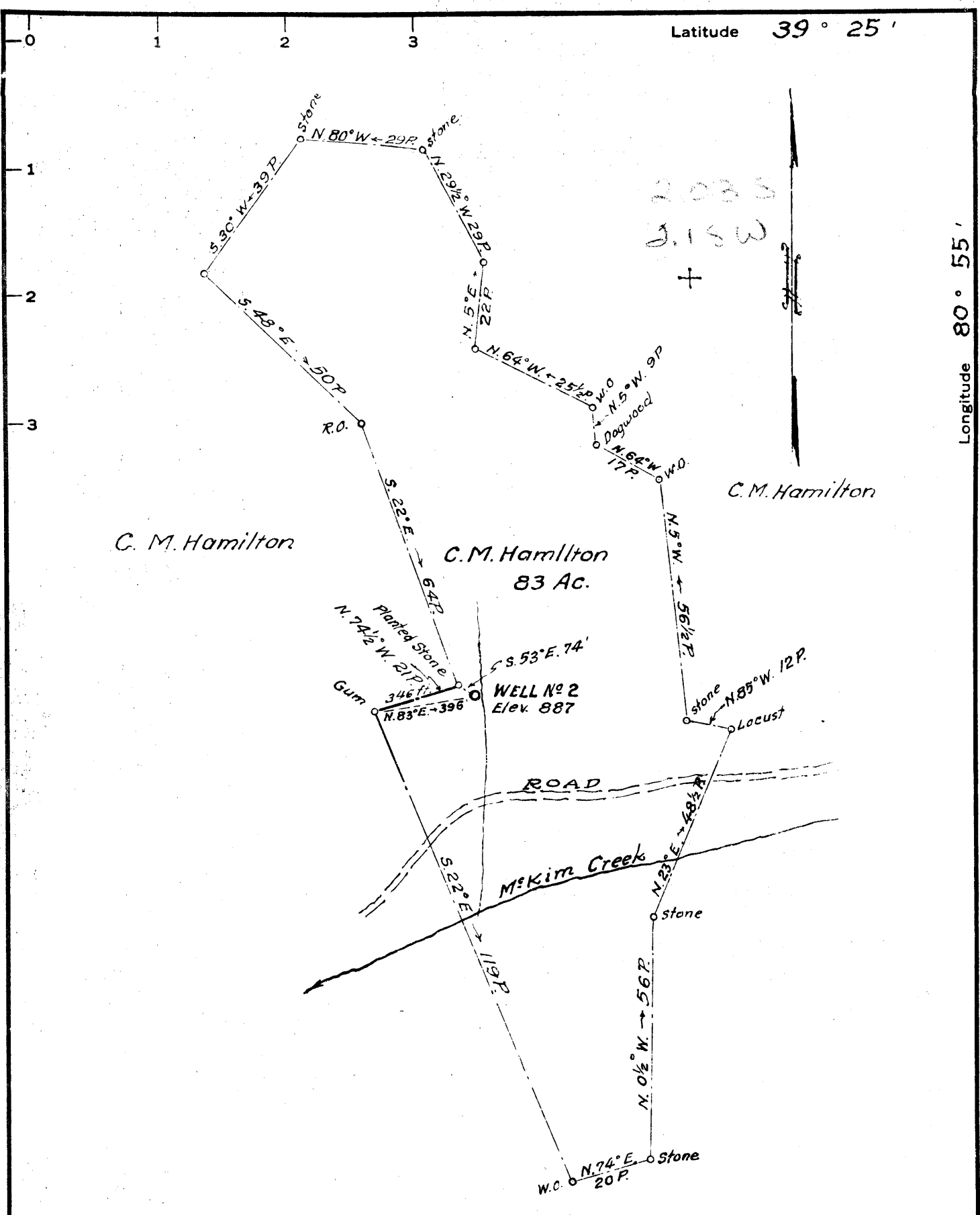
— Denotes one inch spaces on border line of original tracing.

47-095

M

Latitude 39° 25'

Longitude 80° 55'



New Location    
 Drill Deeper    
 Abandonment

Cyrus Bradford

Company Jack E. Webber & Clarence M. Rogers   
 Address 710 Prunty Bldg., Clarksburg, W. Va.   
 Farm C. M. Hamilton   
 Tract 2 Acres 83 Lease No. \_\_\_\_\_   
 Well (Farm) No. 2 Serial No. \_\_\_\_\_   
 Elevation (Spirit Level) 887   
 Quadrangle West Union WC   
 County Tyler District Meade   
 Engineer Parker E. Peters   
 Engineer's Registration No. 485   
 File No. \_\_\_\_\_ Drawing No. \_\_\_\_\_   
 Date Feb. 5, 1962 Scale 1" = 30 P.

STATE OF WEST VIRGINIA  
 DEPARTMENT OF MINES  
 OIL AND GAS DIVISION  
 CHARLESTON

WELL LOCATION MAP  
 FILE NO. TYL-333

+ Denotes location of well on United States Topographic Maps, scale 1 to 62,500, latitude and longitude lines being represented by border lines as shown.

— Denotes one inch spaces on border line of original tracing.



STATE OF WEST VIRGINIA  
DEPARTMENT OF MINES  
OIL AND GAS DIVISION **11**

West Union

Quadrangle \_\_\_\_\_

Permit No. TYL-333

**WELL RECORD**

Oil or Gas Well Gas  
(KIND)

Company J. E. Webber  
Address 710 Prunty Building  
Clarksburg, West Virginia  
Farm C. M. Hamilton Acres 422  
Location (waters) McKim Creek  
Well No. 2 Elev. 887  
District Meade County Tyler  
The surface of tract is owned in fee by C.M. Hamilton  
Address Middlebourne, W.Va.  
Mineral rights are owned by C.M. Hamilton  
Address Middlebourne, W.Va.  
Drilling commenced February 1962  
Drilling completed February 25, 1962  
Date Shot \_\_\_\_\_ From \_\_\_\_\_ To \_\_\_\_\_  
With \_\_\_\_\_  
Open Flow 40 /10ths Water in 2 Inch  
\_\_\_\_\_ /10ths Merc. in \_\_\_\_\_ Inch  
Volume 900,000 Cu. Ft.  
Rock Pressure 500 lbs. 24 hrs.  
Oil \_\_\_\_\_ bbls., 1st 24 hrs.  
WELL ACIDIZED No  
WELL FRACTURED No

Casing and Tubing	Used in Drilling	Left in Well	Packers
Size			
16	13'6"	13'6"	Kind of Packer _____
13			
10	349'4"	Pulled	Size of _____
8 1/2	1088'3"	1088'3"	Depth set _____
7	1795'7"	1795'7"	
5 3/16			
3			Perf. top _____
2			Perf. bottom _____
Liners Used			Perf. top _____
			Perf. bottom _____

CASING CEMENTED \_\_\_\_\_ SIZE \_\_\_\_\_ No. Ft. \_\_\_\_\_ Date \_\_\_\_\_

COAL WAS ENCOUNTERED AT \_\_\_\_\_ FEET \_\_\_\_\_ INCHES  
\_\_\_\_\_ FEET \_\_\_\_\_ INCHES FEET \_\_\_\_\_ INCHES  
\_\_\_\_\_ FEET \_\_\_\_\_ INCHES FEET \_\_\_\_\_ INCHES

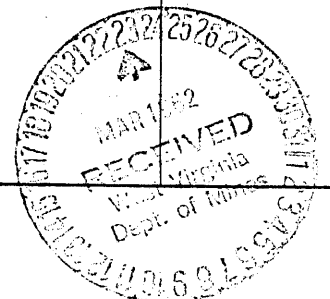
RESULT AFTER TREATMENT \_\_\_\_\_

ROCK PRESSURE AFTER TREATMENT \_\_\_\_\_

Fresh Water \_\_\_\_\_ Feet Salt Water \_\_\_\_\_ Feet

Formation	Color	Hard or Soft	Top	Bottom	Oil, Gas or Water	Depth	Remarks
Soil			0	10	(Water at 120)		
Slate			10	22			
Red Rock			22	140			
Slate			140	145			
Sand			145	215			
Slate			215	228			
Red Rock			228	305			
Slate			305	325			
Sand			325	343			
Slate & Shells			343	440			
Red Rock			440	476			
Slate			476	525			
Sand			525	543			
Red Rock			543	570			
Slate			570	595			
Lime			595	635			
Slate & Shells			635	695			
Lime			695	712			
Slate			712	730			
Red Rock			730	780			
Slate & Shells			780	940	(Oil at 950 to 960)		
Sand			940	975	(Water at 960-970)		
Slate			975	1040	(Boiler every 2 hrs.)		
Sand			1040	1070			
Slate			1070	1085			
Lime			1085	1122			
Slate			1122	1190			
Shale			1190	1271			
Slate			1271	1285			
Lime Gritty			1285	1300			

(over)



Formation	Color	Hard or Soft	Top <sup>22</sup>	Bottom	Oil, Gas or Water	Depth Found	Remarks
Slate			1300	1320			
✓ Sand Salt	(1st)		1320	1390	(Shower of oil	1320	to 1329)
Slate			1395	1400	(Water at	1385, 1 B.	per Hr.)
✓ Sand Salt	(2nd.)		1400	1455	(At 1435	hole full)	
Lime			1455	1490			
Slate			1490	1555			
Lime			1555	1563			
✓ Maxon Sand			1563	1585	1788		
Black Slate			1585	1600	882		
Lime			1600	1615	901		
Slate			1615	1640			
Lime			1640	1670			
Slate			1670	1720			
Sand Hard			1720	1738			
Black Slate			1738	1755			
✓ Little Lime			1755	1779			
✓ Pencil Cane			1779	1788			
✓ Big Lime			1788	1865	(Show of oil	1800-1805)	
Sand			1865	1872	(Gas at	1865, too)	
TOTAL DEPTH			1872				
Drilling completed 2-25-62							

Date..... March 22, ..... 19 62

APPROVED..... Jack Webber ..... Owner

By..... Attorney..... (title)