

New location
 Drill Deeper
 Abandonment

Issued 6/19/74

STANLEY H. SPENCER COMPANY
 Company *Stanley H. Spencer, Geologist, M. R. Peters, Agt.*
 P.O. Box 330, Spencer, 25276
 Address *210 County Bldg, Gloucester, W. Va.*

Farm Ota E. Darnall
 Tract 1 Acres 41 Lease No. _____
 Well (Farm) No. 1 Serial No. _____
 Elevation (Spirit Level) 857
 Quadrangle West Union WC
 County Tyler District Centerville
 Engineer Parker E. Peters
 Engineer's Registration No. 485
 File No. _____ Drawing No. _____
 Date June 13, 1962 Scale 1" = 20 P.

STATE OF WEST VIRGINIA
 DEPARTMENT OF MINES
 OIL AND GAS DIVISION
 CHARLESTON
WELL LOCATION MAP
 FILE NO. JYL-346-P

| Denotes location of well on United States Topographic Maps, scale 1 to 62,500, latitude and longitude lines being represented by border lines as shown.

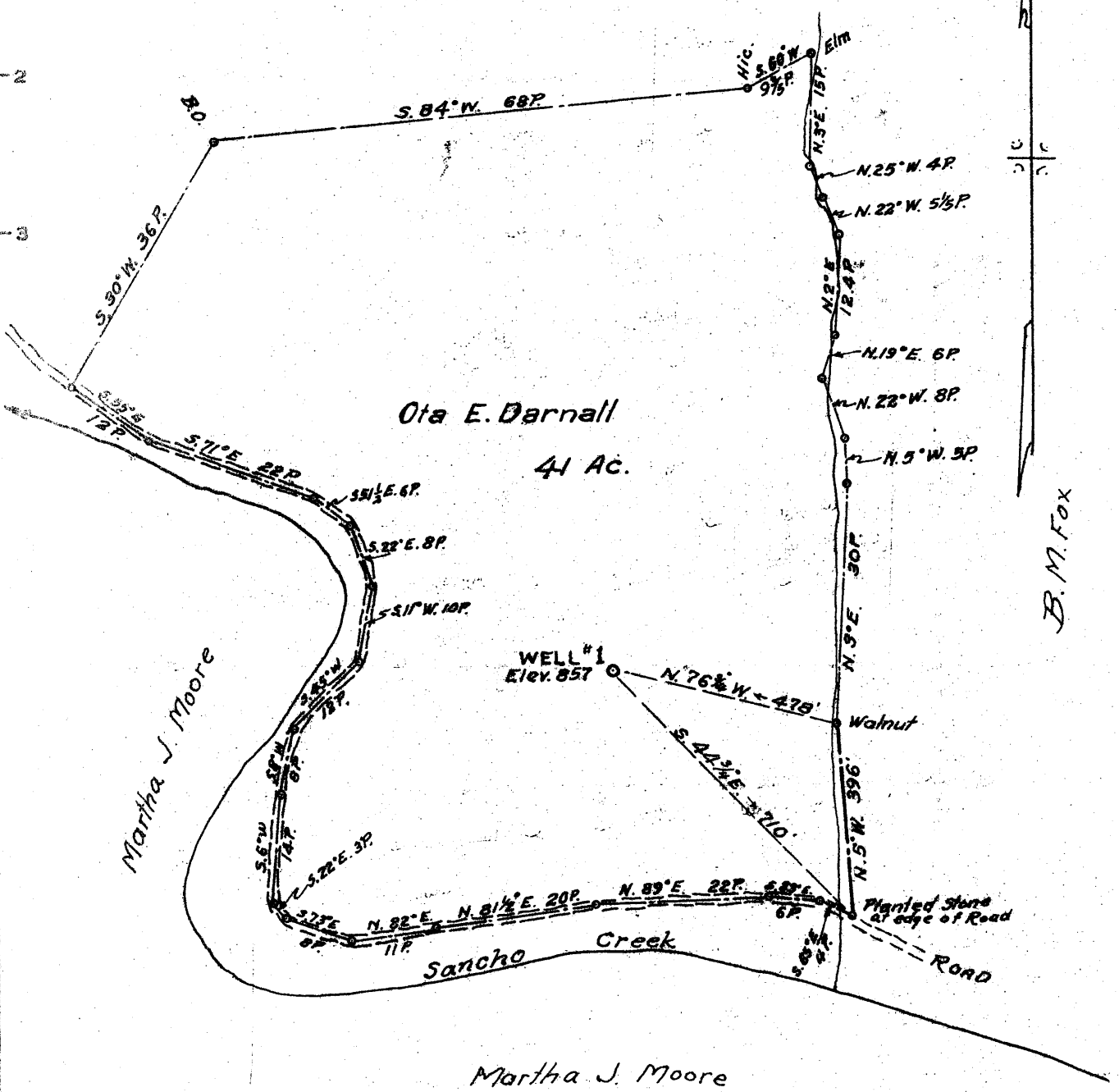
-- Denotes one inch spaces on border line of original tracing.

47-095

0.085
0.50W

B. M. Fox Hrs.

Longitude 80° 55'



- New Location
- Drill Deeper
- Abandonment

Company Jack F. Webber, Clarence M. Rogers, Agt.
 Address 710 Prunty Bldg. Clarksburg, W. Va.
 Farm Ota E. Darnall
 Tract 1 Acres 41 Lease No. _____
 Well (Farm) No. 1 Serial No. _____
 Elevation (Spirit Level) 857
 Quadrangle West Union WC
 County Tyler District Centerville
 Engineer Parker E. Peters
 Engineer's Registration No. 485
 File No. _____ Drawing No. _____
 Date June 13, 1962 Scale 1" = 20 P.

STATE OF WEST VIRGINIA
 DEPARTMENT OF MINES
 OIL AND GAS DIVISION
 CHARLESTON

WELL LOCATION MAP
 FILE NO. JYL-346

+ Denotes location of well on United States Topographic Maps, scale 1 to 62,500, latitude and longitude lines being represented by border lines as shown.

— Denotes one inch spaces on border line of original tracing.



STATE OF WEST VIRGINIA
DEPARTMENT OF MINES
OIL AND GAS DIVISION *23*

Quadrangle West Union

Permit No. TYL-346

WELL RECORD

Oil or Gas Well Comb
(KIND)

Company JACK E. WEBBER
 Address 710 Prunty Bldg., Clarksburg, W. Va.
 Farm OTA E. DARNELL Acres 41
 Location (waters) SANCHO CREEK
 Well No. 1 Elev. 857
 District CENTERVILLE County TYLER
 The surface of tract is owned in fee by OTA E. DARNELL
 Address _____
 Mineral rights are owned by _____
 Address _____
 Drilling commenced JUNE 28, 1962
 Drilling completed JULY 31, 1962
 Date Shot _____ From _____ To _____
 With _____
 Open Flow _____ /10ths Water in _____ Inch
 _____ /10ths Merc. in _____ Inch
 Volume _____ Cu. Ft.
 Rock Pressure _____ lbs. _____ hrs.
 Oil _____ bbls., 1st 24 hrs.
 WELL ACIDIZED _____
 WELL FRACTURED August 6, 1962

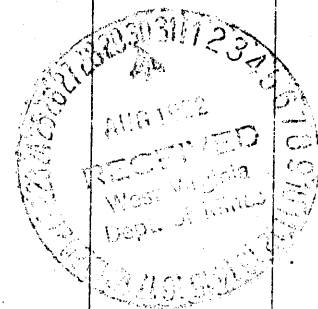
Casing and Tubing	Used in Drilling	Left in Well	Packers
Size			Kind of Packer
16			
13			
10	293'	None	Size of _____
8 3/4	1005'	None	
6 3/4			Depth set _____
5 3/16			
3			Perf. top _____
2			Perf. bottom _____
Liners Used			Perf. top _____
4 1/2"		202 1/4'	Perf. bottom _____

CASING CEMENTED 4 1/2" SIZE 202 1/4' No. Ft. Aug 1, '62 Date
 65 sacks cement - Dowell

COAL WAS ENCOUNTERED AT None FEET INCHES
 _____ FEET INCHES FEET INCHES
 _____ FEET INCHES FEET INCHES

RESULT AFTER TREATMENT 85 000 cu ft per day Oil show
 ROCK PRESSURE AFTER TREATMENT 200# - 48 hrs
 Fresh Water 1300 Feet Salt Water None Feet

Formation	Color	Hard or Soft	Top	Bottom	Oil, Gas or Water	Depth	Remarks
CLAY		SOFT	0	15			
RED ROCK	Red	HARD	15	45			
SLATE	DARK		45	55			
RED ROCK	RED	HARD	55	80			
SLATE & SHELLS	DARK						
SAND		SOFT	80	115			
BLACK SLATE	BLACK	HARD	115	140			
SLATE SHELLS	DARK		140	145			
RED ROCK	RED	HARD	145	160			
G. SHELL			160	210			
SAND	LIGHT	SOFT	210	225			
RED ROCK	RED	HARD	225	235			
G. SHELL		HARD	235	275			
RED ROCK	RED	HARD	275	370			
LIME	GRAY	HARD	370	400			
SLATE SHELLS	DARK	SOFT	400	430			
LIME			430	450			
SLATE SHELLS	DARK	SOFT	450	470			
SAND			470	504			
SLATE			504	520			
LIME	DARK	HARD	520	582			
W SLATE	WHITE	SOFT	582	605			
RED ROCK			605	760			
			760	810			



Formation	Color	Hard or Soft	Top ²³	Bottom	Oil, Gas or Water	Depth Found	Remarks
SLATE & SHELLS	DARK	HARD	810	890			
RED ROCK	RED	HARD	890	930			
WHITE SLATE	WHITE	HARD	930	950			
SAND	BROWN	HARD	950	980			
SLATE & SHELLS	DARK	HARD	980	1015			
LIME		SOFT	1015	1030			
WHITE SLATE	WHITE	SOFT	1030	1060			
BLACK SLATE	BLACK	SOFT	1060	1100			
SLATE & SHELLS	DARK	SOFT	1100	1140			
PINK ROCK			1140	1145			
SLATE & SHELLS		SOFT	1145	1175			
1st SALT	LIGHT	HARD	1175	1270			
SLATE & SHELLS		SOFT	1270	1300			
2nd SALT	GREY		1300	1375			
SLATE & SHELLS		SOFT	1375	1558			
3rd SALT			1558	1652			
BLACK SLATE	BLACK	SOFT	1652	1694			
MAXON	BLACK	HARD	1694	1715	OIL SLICK	1694 to 1705	
	WHITE						
BLACK SLATE	BLACK	SOFT	1715	1756			
LITTLE LIME	LIGHT	HARD	1756	1765			
BIG LIME	GREY	HARD	1765	1840			
BIG INJUN	LIGHT	HARD	1840	1995	GAS oil	1845	
SHALE	DARK	SOFT	1995	2039		1863 to 1880	

Date _____, 19____

APPROVED _____, Owner

By _____ (Title)