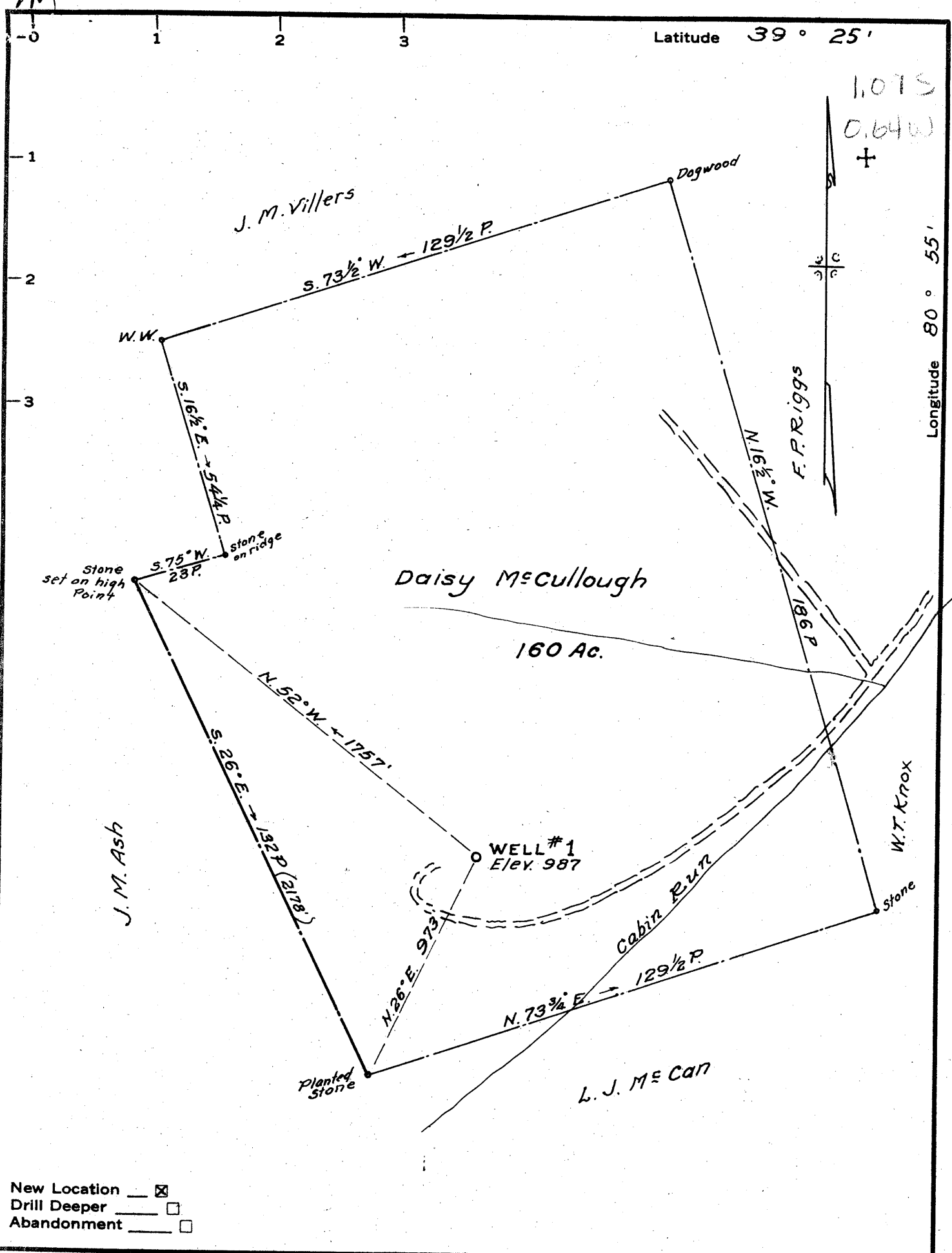


New Location
 Drill Deeper
 Abandonment
 Issued 6/19/74
~~Stone Street Lumber Co., Clarence M. Rogers Agt~~
 Company ~~Jack Weaver, 25276~~
 Address ~~P.O. Box 350, Spencer, W. Va.~~
 Farm Daisy McCullough
 Tract _____ Acres 160 Lease No. _____
 Well (Farm) No. 1 Serial No. _____
 Elevation (Spirit Level) 987
 Quadrangle West Union WC
 County Tyler District Centerville
 Engineer Parker & Peters
 Engineer's Registration No. 485
 File No. _____ Drawing No. _____
 Date July 5, 1962 Scale 1" = 30P.

STATE OF WEST VIRGINIA
 DEPARTMENT OF MINES
 OIL AND GAS DIVISION
 CHARLESTON
 WELL LOCATION MAP
 FILE NO. JYL-350-P
 | Denotes location of well on United States
 Topographic Maps, scale 1 to 62,500, lat-
 itude and longitude lines being represented
 by border lines as shown.

--- Denotes one inch spaces on border line
 of original tracing. 47-095



New Location
 Drill Deeper
 Abandonment

Company Jack E. Webber, Clarence M. Rogers Agt.
 Address 710 Pruett Bldg Clarksburg, W. Va.
 Farm Daisy McCullough
 Tract _____ Acres 160 Lease No. _____
 Well (Farm) No. 1 Serial No. _____
 Elevation (Spirit Level) 987
 Quadrangle West Union WC
 County Tyler District Centerville
 Engineer Parker & Peters
 Engineer's Registration No. 485
 File No. _____ Drawing No. _____
 Date July 5, 1962 Scale 1" = 30 P.

STATE OF WEST VIRGINIA
 DEPARTMENT OF MINES
 OIL AND GAS DIVISION
 CHARLESTON

WELL LOCATION MAP
 FILE NO. JYL-350

+ Denotes location of well on United States Topographic Maps, scale 1 to 62,500, latitude and longitude lines being represented by border lines as shown.

— Denotes one inch spaces on border line of original tracing.



STATE OF WEST VIRGINIA
DEPARTMENT OF MINES
OIL AND GAS DIVISION 32

Quadrangle West Union

Permit No. TYL-350

WELL RECORD

Oil or Gas Well Gas
(KIND)

Company Jack E. Webber
Address Morgansville, W. Va.
Farm McCullough Acres 170
Location (waters) Cabin Run of Sancho Creek
Well No. 1 Elev. 895
District Centerville County Tyler
The surface of tract is owned in fee by V.H. Hadley
et al. Address Wick, W. Va.
Mineral rights are owned by Daisey McCullough
et al. Address
Drilling commenced 7-2-62
Drilling completed 7-19-62
Date Shot From To
With
Open Flow /10ths Water in Inch
 /10ths Merc. in Inch
Volume 10,000 Cu. Ft.
Rock Pressure lbs. hrs.
Oil show bbls., 1st 24 hrs.
WELL ACIDIZED

Casing and Tubing	Used in Drilling	Left in Well	Packers
Size			Kind of Packer
16	30	30	
13			
10			Size of
8 3/4	1100	pulled	
6 3/4			Depth set
5 3/16			
3 4 1/2	2055	2055	Perf. top
2			Perf. bottom
Liners Used			Perf. top
			Perf. bottom

CASING CEMENTED 4 1/2 SIZE 300 No. Ft. 7/25/62 Date
85 sks. cement, 3 sks. aquagel - DOWELL

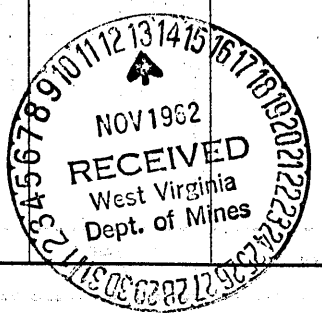
COAL WAS ENCOUNTERED AT None FEET INCHES
 FEET INCHES FEET INCHES
 FEET INCHES FEET INCHES

WELL FRACTURED 6-30-62
870 bbls water 38,000 lbs sand

RESULT AFTER TREATMENT well closed in testing 120,000
ROCK PRESSURE AFTER TREATMENT 224# 60 hrs.

Fresh Water Feet Salt Water 1st salt 1330 Feet

Formation	Color	Hard or Soft	Top	Bottom	Oil, Gas or Water	Depth	Remarks
Red Rock			0	25			
Sand			25	41			
Red Rock			41	53			
Red Rock			53	182			
Slate			182	224			
Red Rock			224	264			
Slate & Shale			264	278			
Red Rock			278	315			
Slate & Shale			315	340			
Red Rock			340	360			
Slate & Shale			360	430			
Red Rock			430	433			
Lime			433	515			
Red Rock			515	526			
Slate			526	546			
Sand			546	566			
Slate & Shale			566	630			
Lime			630	670			
Slate			670	695			
Red Rock			695	705			
Slate			705	735			
Lime			735	750			
Slate			750	785			
Red Rock			785	860			
Slate & Shale			860	900			
Red Rock			900	925			
Slate			925	940			
Red Rock			940	965			
Slate & Shale			965	990			



Formation	Color	Hard or Soft	Top ³²	Bottom	Oil, Gas or Water	Depth Found	Remarks
Sand			990	1009			
Slate			1009	1055			
Black Slate			1055	1065			
Slate & Shale			1065	1075			
Sand			1075	1105			
Slate			1105	1140			
Pink Rock			1140	1152			
Slate			1152	1165			
Sand			1165	1185			
Slate & Shale			1185	1210			
Lime			1210	1245			
1st. Salt Sand			1245	1335			
Slate & Shells			1335	1367			
2nd Salt Sand			1367	1450			
Slate & Shale			1450	1500			
3rd Salt Sand			1500	1532			
Slate & Shale			1532	1645			
Maxton Sand			1645	1665	(Show of oil 1650')		
Slate & Shale			1665	1720			
Sand			1720	1755			
Slate			1755	1760			
Little Lime			1760	1773			
Big Lime			1773	1857	(Gas 1853 to 1856')		
Sand			1857	1866			
Lime			1866	1880			
Big Injun Sand			1880	1990	(Oil 1887 to 1897')		
Slate			1990	1994			
Sand			1994	2045			
Slate & Shale			2045	2108			
TOTAL DEPTH			2108				

1773
895
878

Date 11-9, 1962
 APPROVED Jack E. Welby, Owner
 By James W. Ferguson
 (Title)