

New Location   
 Drill Deeper   
 Abandonment

*issued 7/24/74*

~~Interstate Roads Co.~~

Company ~~Jack W. Gibson - Clarence M. Rogers, Agt.~~  
 Address ~~110 Perry Blvd, Clarksburg, W. Va. 25216~~

Farm Herbert Riggs

Tract 1 Acres 28 Lease No. \_\_\_\_\_

Well (Farm) No. 1 Serial No. \_\_\_\_\_

Elevation (Spirit Level) 808

Quadrangle West Union WC

County Tyler District Centerville

Engineer Parker E. Peters

Engineer's Registration No. 485

File No. \_\_\_\_\_ Drawing No. \_\_\_\_\_

Date June 25, 1962 Scale 1" = 20 P.

STATE OF WEST VIRGINIA  
 DEPARTMENT OF MINES  
 OIL AND GAS DIVISION  
 CHARLESTON

WELL LOCATION MAP  
 FILE NO. TYL-356-P

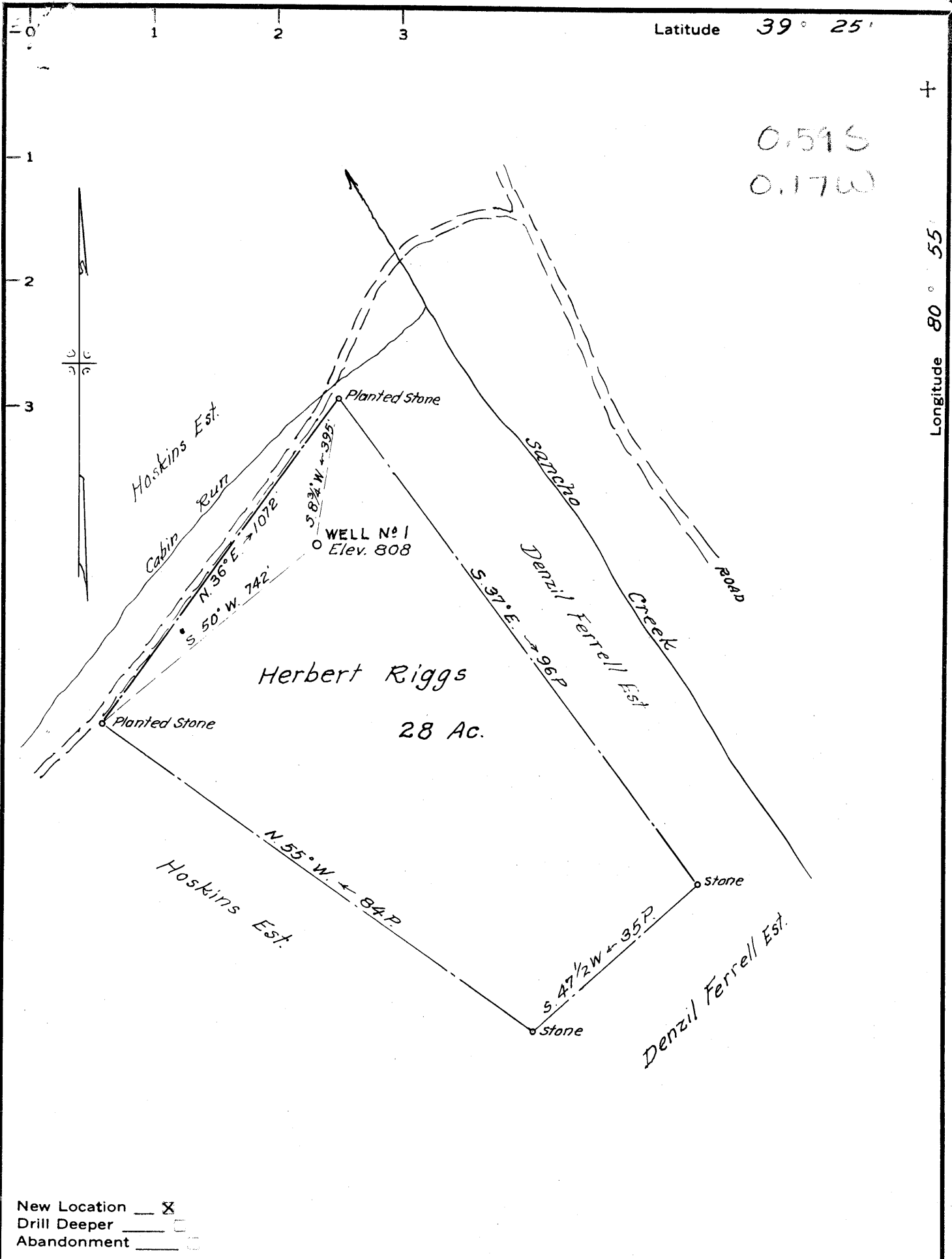
+ Denotes location of well on United States Topographic Maps, scale 1 to 62,500, latitude and longitude lines being represented by border lines as shown.

AUG 26 1974

— Denotes one inch spaces on border line of original tracing.

47-095

M



Latitude 39° 25'

0.59S  
0.17W

Longitude 80° 55'

New Location  X  
 Drill Deeper   
 Abandonment

Company Jack F. Webber - Clarence M. Rogers, Agt.  
 Address 710 Prunty Bldg, Clarksburg, W. Va.  
 Farm Herbert Riggs  
 Tract 1 Acres 28 Lease No. \_\_\_\_\_  
 Well (Farm) No. 1 Serial No. \_\_\_\_\_  
 Elevation (Spirit Level) 808  
 Quadrangle West Union WC  
 County Tyler District Centerville  
 Engineer Parker E. Peters  
 Engineer's Registration No. 485  
 File No. \_\_\_\_\_ Drawing No. \_\_\_\_\_  
 Date June 25, 1962 Scale 1" = 20 P.

STATE OF WEST VIRGINIA  
 DEPARTMENT OF MINES  
 OIL AND GAS DIVISION  
 CHARLESTON  
 WELL LOCATION MAP  
 FILE NO. T44-356

— Denotes location of well on United States Topographic Maps, scale 1 to 62,500, latitude and longitude lines being represented by border lines as shown.  
 — Denotes one inch spaces on border line of original tracing.



STATE OF WEST VIRGINIA  
DEPARTMENT OF MINES  
OIL AND GAS DIVISION 19

Quadrangle West Union

Permit No. TYL-356

WELL RECORD

Oil or Gas Well gas

Company Jack E. Webber  
 Address Morgansville, W. Va.  
 Farm Herbert Riggs Acres 28  
 Location (waters) Sancho Creek  
 Well No. 1 Elev. 808  
 District Centerville County Tyler  
 The surface of tract is owned in fee by H. Riggs  
 Address \_\_\_\_\_  
 Mineral rights are owned by Herbert Riggs  
Rt. L Middlebourne Address \_\_\_\_\_  
 Drilling commenced July 1962  
 Drilling completed August 1962  
 Date Shot \_\_\_\_\_ From \_\_\_\_\_ To \_\_\_\_\_  
 With \_\_\_\_\_  
 Open Flow \_\_\_\_\_ /10ths Water in \_\_\_\_\_ Inch  
 \_\_\_\_\_ /10ths Merc. in \_\_\_\_\_ Inch  
 Volume 5000 Cu. Ft.  
 Rock Pressure 400 lbs. hrs.  
 Oil \_\_\_\_\_ no \_\_\_\_\_ p \_\_\_\_\_ bbls., 1st 24 hrs.  
 WELL ACIDIZED \_\_\_\_\_  
 WELL FRACTURED no

Casing and Tubing	Used in Drilling	Left in Well	Packers
Size			
16	40	40	Kind of Packer
13			
10			Size of
8 1/2	800	pulled	
6 1/2			Depth set
5 3/16			
3 4 1/2"	2000	2000	Perf. top
2			Perf. bottom
Liners Used			Perf. top
			Perf. bottom

CASING CEMENTED 4 1/2 SIZE 200 No. Ft. \_\_\_\_\_ Date \_\_\_\_\_

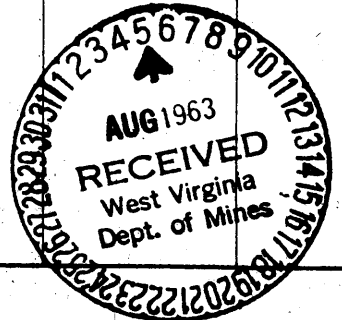
COAL WAS ENCOUNTERED AT none FEET \_\_\_\_\_ INCHES  
 \_\_\_\_\_ FEET \_\_\_\_\_ INCHES \_\_\_\_\_ FEET \_\_\_\_\_ INCHES  
 \_\_\_\_\_ FEET \_\_\_\_\_ INCHES \_\_\_\_\_ FEET \_\_\_\_\_ INCHES

RESULT AFTER TREATMENT

ROCK PRESSURE AFTER TREATMENT

Fresh Water 165' Feet Salt Water 1807' Big Injun Feet

Formation	Color	Hard or Soft	Top	Bottom	Oil, Gas or Water	Depth	Remarks
Red Rock			0	65			
White Slate			65	100			
Red Rock			100	150			
Sand			150	175			
Red Rock			175	250			
Lime			250	260			
Red Rock			260	290			
Slate & Shells			290	340			
Sand			340	365			
Slate			365	370			
Lime			370	395			
Red Lime			395	450			
Slate & Shells			450	480			
Sand			480	520			
Slate			520	575			
Lime			575	600			
Slate			600	688			
Red Rock			688	715			
Slate & Shells			715	730			
Pink Rock			730	750			
Red Rock			750	840			
Slate & Shells			840	890			
Red Rock			890	925			
Slate			925	950			
1st Cow Run Sand			950	955			
Sand			955	970			
Red Rock			970	990			
Lime			990	1009			
Black Slate			1009	1007			



Formation	Color	Hard or Soft	Top 29	Bottom	Oil, Gas or Water	Depth Found	Remarks
Red Rock			1077	1082			
Slate			1082	1111			
Red Lime			1111	1126			
Slate			1126	1160			
✓ 1st Salt Sand			1160	1260			
Lime			1260	1270			
Slate			1270	1335			
✓ 2nd Salt Sand			1335	1380			
Slate			1380	1425			
✓ 3rd Salt Sand			1425	1475	1710		
Slate			1475	1573	808		
✓ Saxton Sand			1573	1602			
Slate			1602	1700			
✓ Little Lime			1700	1706			
✓ Pencil Cave			1706	1710			
✓ Big Lime			1710	1800			
✓ Big Injun Sand			1800	1930			
✓ Squaw Sand			1930	2000			
Slate			2000	2200			
Gritty Lime			2200	2285			
Slate			2285	2455			
Brown Shale			2455	2509			
Slate & Shells			2509	2513			
Brown Shale			2513	2525			
Black Lime & Brown Shale			2525	2537			
Black Lime			2537	2547			
Brown & Black Shale			2547	2558			
Black Shale			2558	2568			
Black Shale			2568	2578			
Sandy Lime with Brown Shale			2578	2582			
Brown & Black Shale			2582	2592			
Black Shale			2592	2600			
Black Shale			2600	2675			

Date 8-1, 1962  
APPROVED Jack E. Walker, Owner  
By Ch. Rogers, atty (Title)